

CITY OF LATHROP

Department of Public Works

DESIGN & CONSTRUCTION

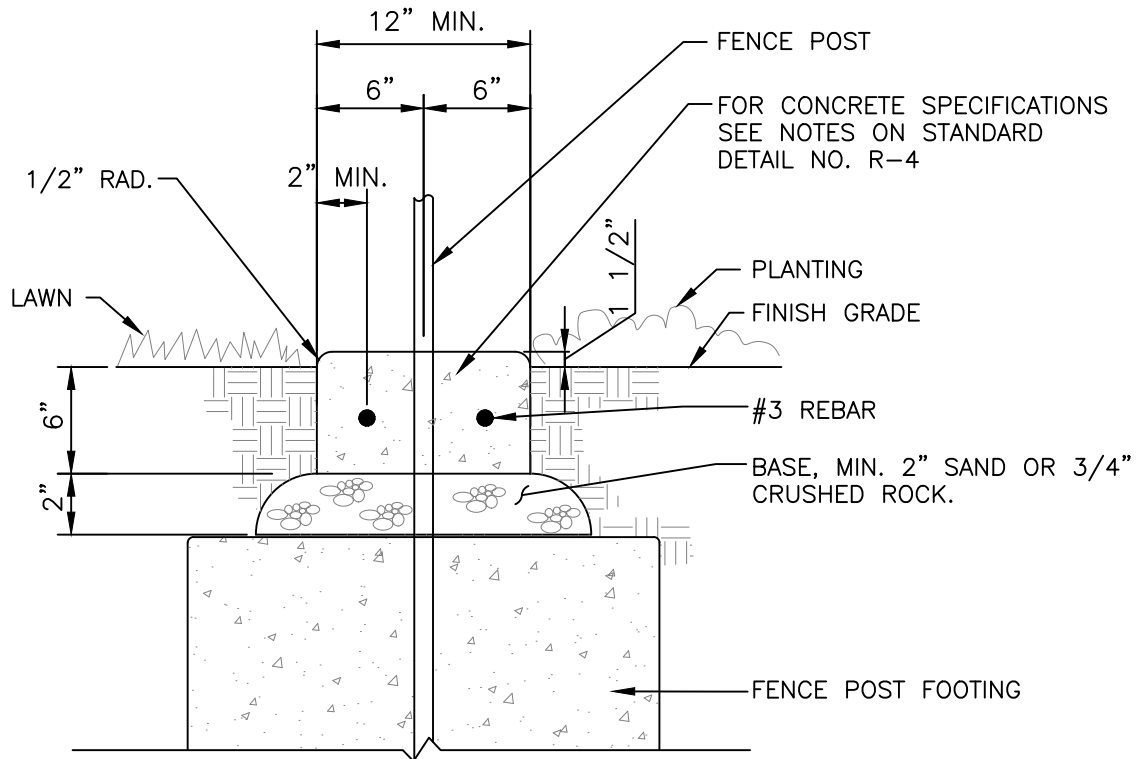
Standard Details



July 2024

Landscape

Concrete Mow Strip At Fence	L-1
Chain Link Fence Up To 8' Height	L-2
Post And Cable Fence	L-3
Drain At Play Area Surfacing	L-4
Drinking Fountain	L-5
Gate Valve (Typical)	L-6
Ball Valve	L-7
Backflow Preventer	L-8
Backflow Preventer Enclosure	L-9
Pedestal Controller	L-10
Cs3000 Controller Specifications	L-11
Master Valve and Flow Sensors	L-12
Control Wire Splice	L-13
Quick Coupler	L-14
Rotor Sprinklers	L-15
Tree Bubbler	L-16
Valve Box Layout	L-17
Irrigation Piping And Wiring	L-18
Utility Box	L-19
Median Island Maintenance Band Detail (For Existing Curb)	L-20
Parkway Swale	L-21
Area Drain	L-22
Shrub Pop-Up Spray Head	L-23
Tree Planting	L-24
Typical Tree Guying For 24" - 30" Box	L-25
Bubbler Details	L-26
Typical Subsurface Dripfield Layout	L-27
Drip Irrigation Control Valve Assembly	L-28
Shrub Planting	L-29
Groundcover Planting And Spacing	L-30
3M-DBY Wire Connection for Non-2 Wire System	L-31
Standard Bike Rack	L-32
Dogipot Pet Station	L-33



CONCRETE MOW STRIP AT FENCE

NOTES:

1. Mow strips are required below all fencing located within turf areas or as directed by plans.
2. Provide Score Joints at Each Fence Post (10'-0" Max. Spacing) and Expansion Joints at Every Other Fence Post (20'-0" Max. Spacing).

NOT TO SCALE

Approved by:

[Signature]
City of Lathrop
City Engineer

No	Revised	Date

CITY OF LATHROP
DEPARTMENT OF PUBLIC WORKS

**CONCRETE MOW STRIP
AT FENCE**

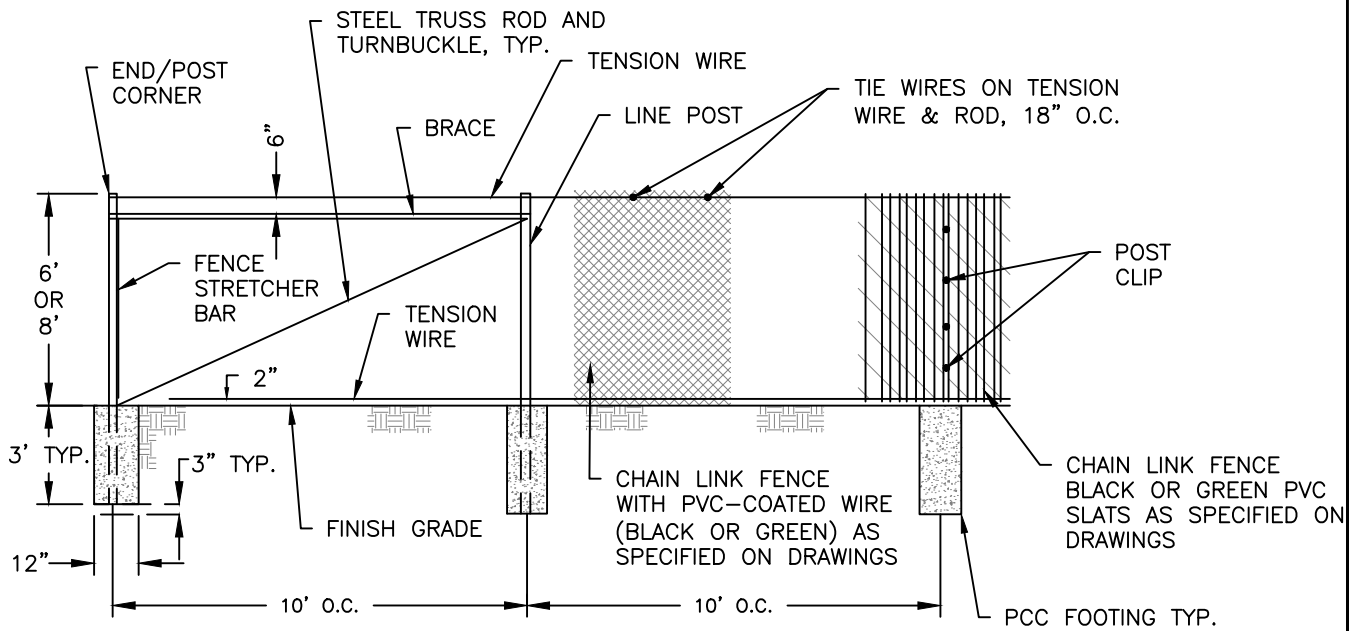
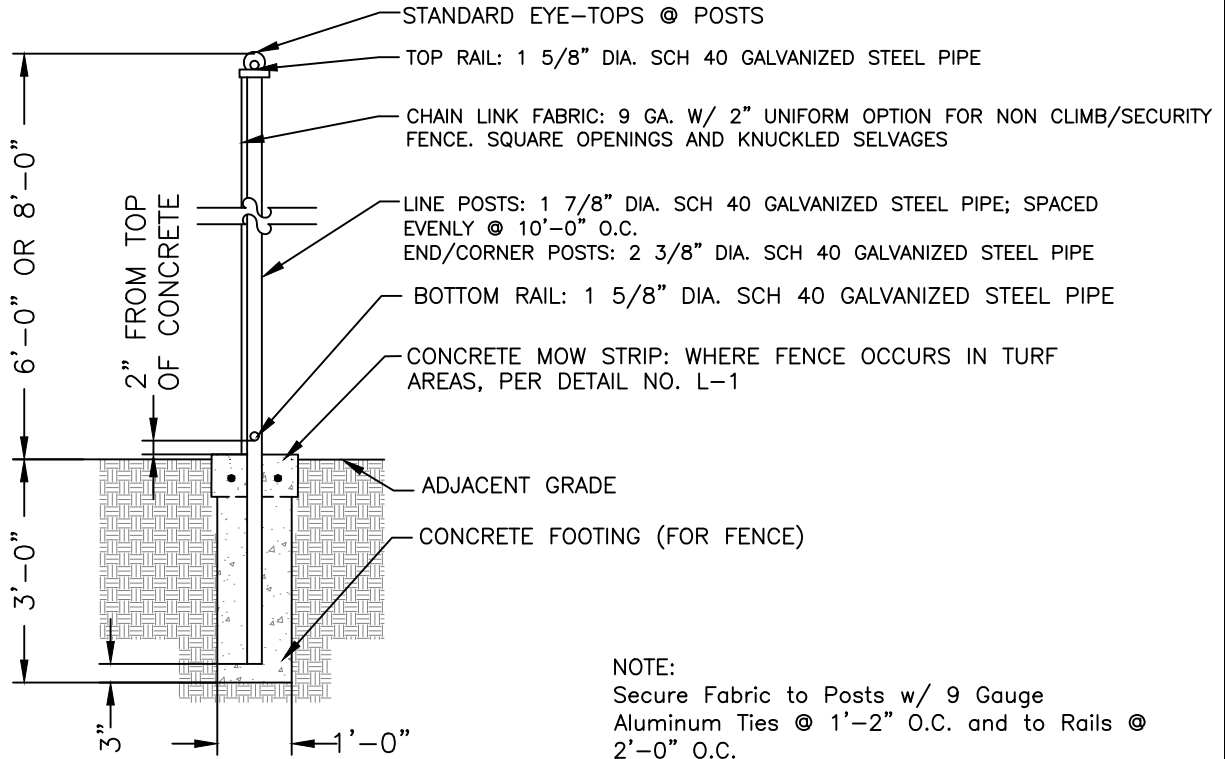


**STANDARD
DETAIL**

Date: JULY 2024

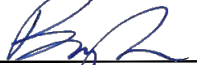
Drawing No:

L-1



NOT TO SCALE

Approved by:



City of Lathrop
City Engineer

No	Revised	Date

CITY OF LATHROP
DEPARTMENT OF PUBLIC WORKS

**CHAIN LINK FENCE
UP TO 8' HEIGHT**

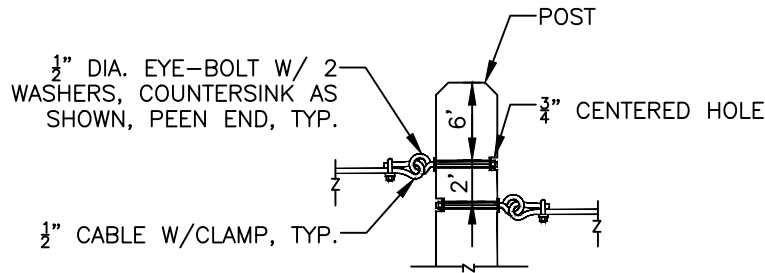
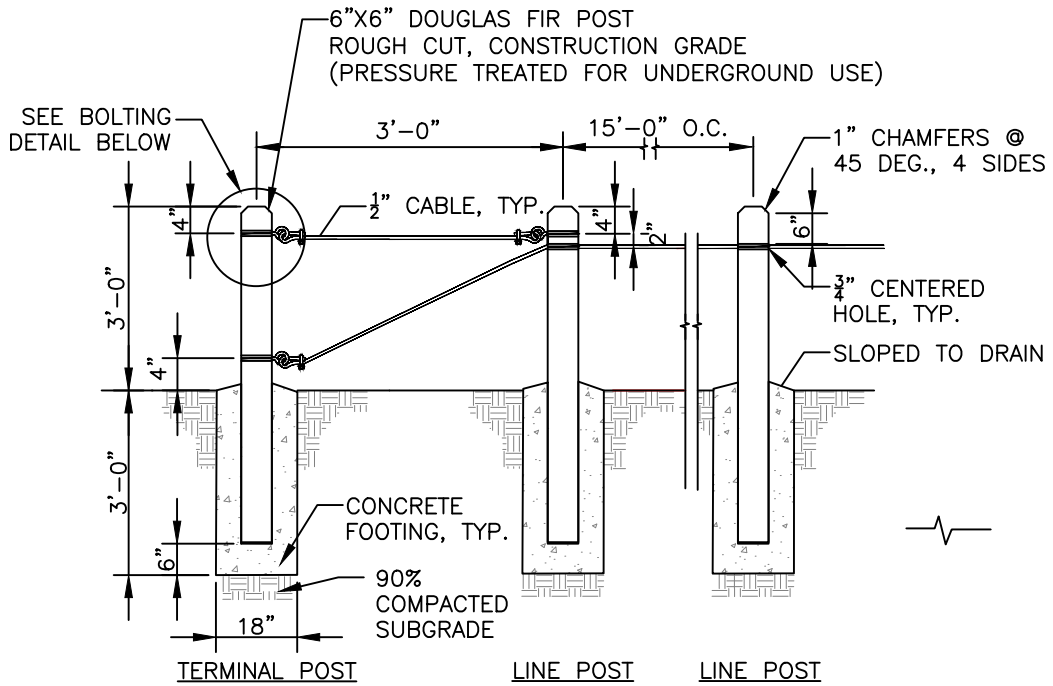


**STANDARD
DETAIL**

Date: JULY 2024

Drawing No:

L-2



NOTES:

1. Provide concrete footing at all posts.
2. Use $\frac{3}{8}$ "x2" galvanized wire rope clips for connection and splices. All clips shall be placed with nuts facing downward.

NOT TO SCALE

Approved by:

[Signature]
 City of Lathrop
 City Engineer

CITY OF LATHROP
 DEPARTMENT OF PUBLIC WORKS

POST AND CABLE FENCE



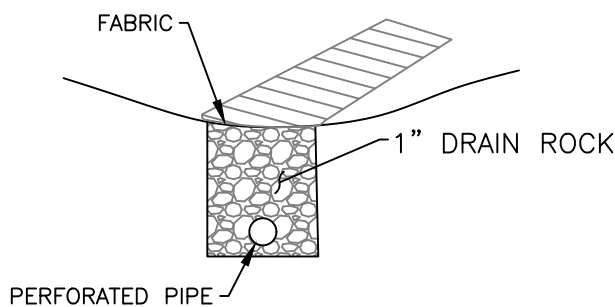
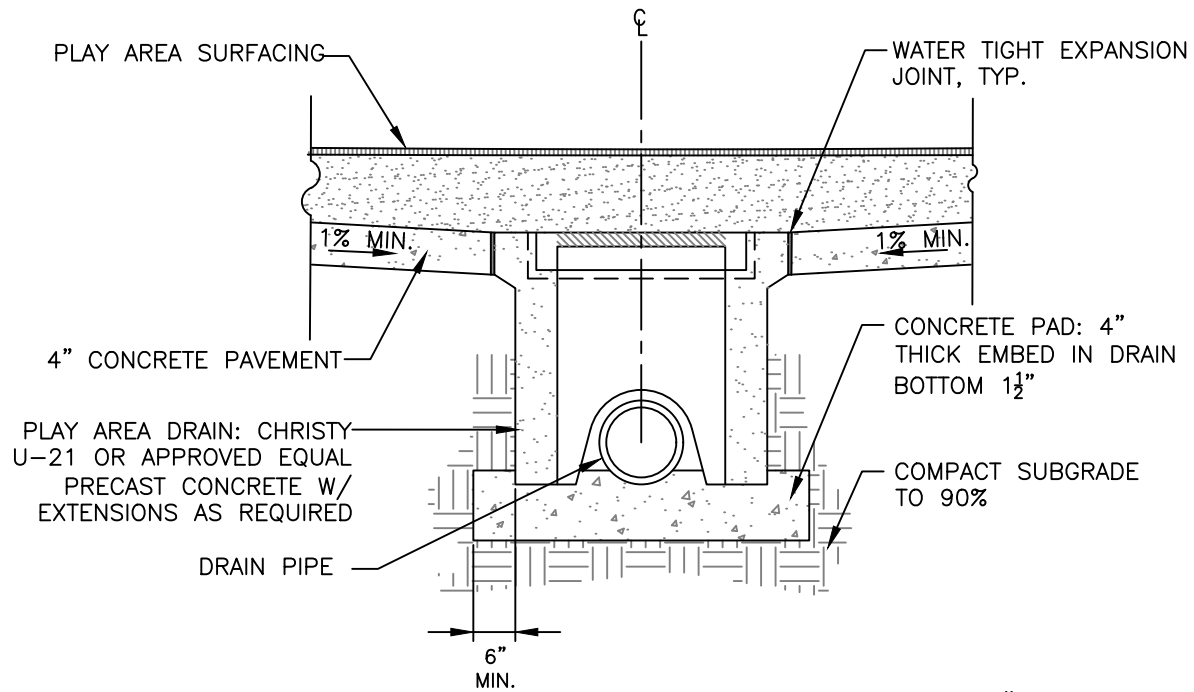
**STANDARD
 DETAIL**

Date: JULY 2024

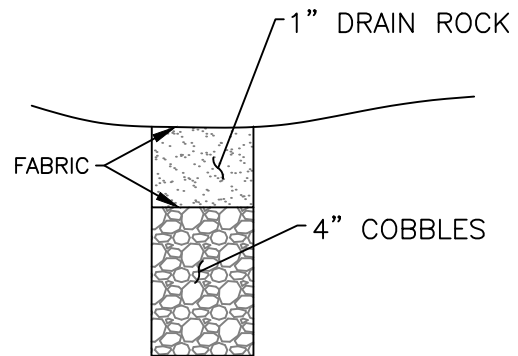
Drawing No:

L-3

No	Revised	Date



FRENCH DRAIN
OPTION 2



OPEN BOTTOM CB WITH
ROCK DRAINAGE PIT.
OPTION 3

NOT TO SCALE

Approved by:

[Signature]
City of Lathrop
City Engineer

No	Revised	Date

CITY OF LATHROP
DEPARTMENT OF PUBLIC WORKS

**DRAIN AT PLAY AREA
SURFACING**

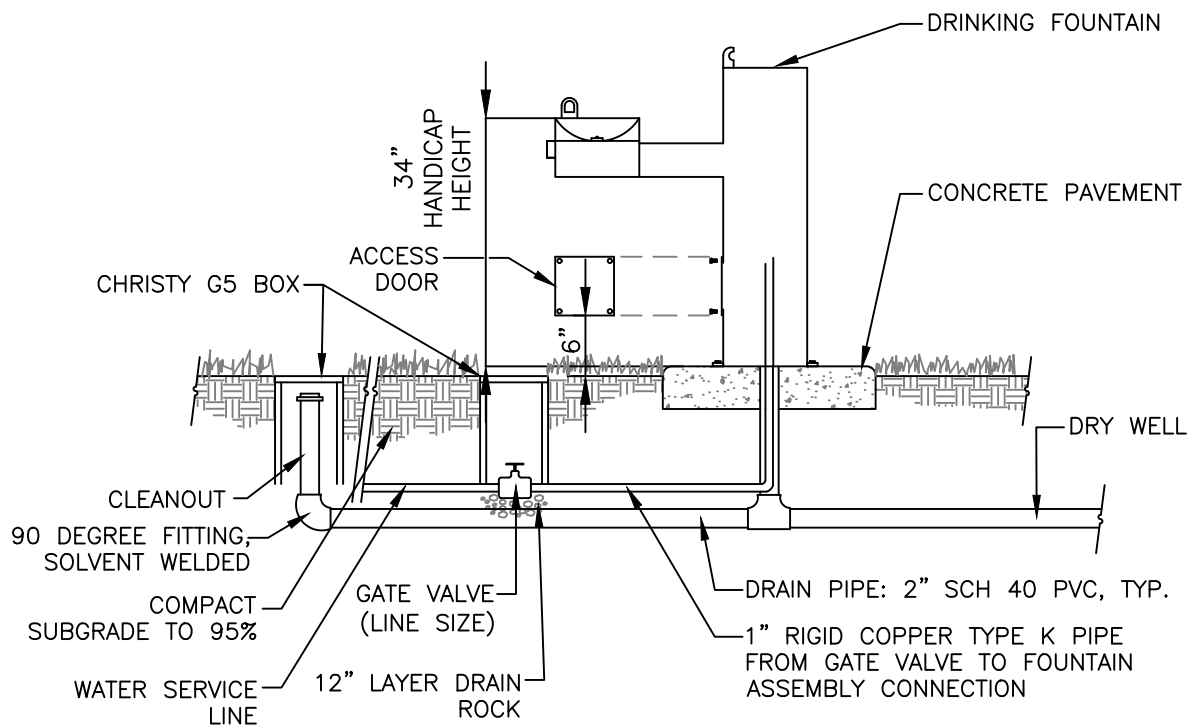
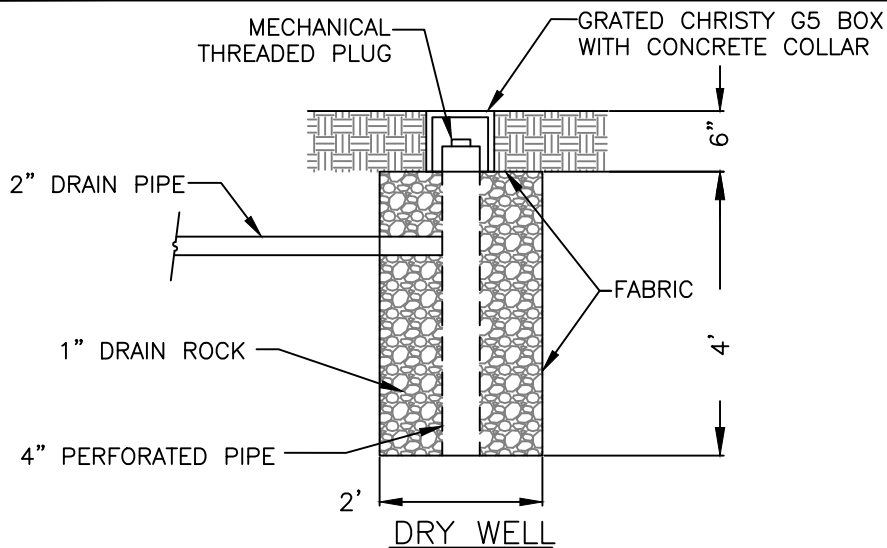


**STANDARD
DETAIL**

Date: JULY 2024

Drawing No:

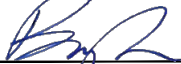
L-4



NOTES:

1. Provide 6" Clear from Back Edge of Fountain to Back Edge of Concrete Pad.
2. Drinking Fountain shall be as manufactured by Most Dependable Fountains #440 SMFA and SMSSF with optional pet fountain or approved equal.

NOT TO SCALE

Approved by:		
		
City of Lathrop City Engineer		
No	Revised	Date

CITY OF LATHROP
DEPARTMENT OF PUBLIC WORKS

DRINKING FOUNTAIN



**STANDARD
DETAIL**

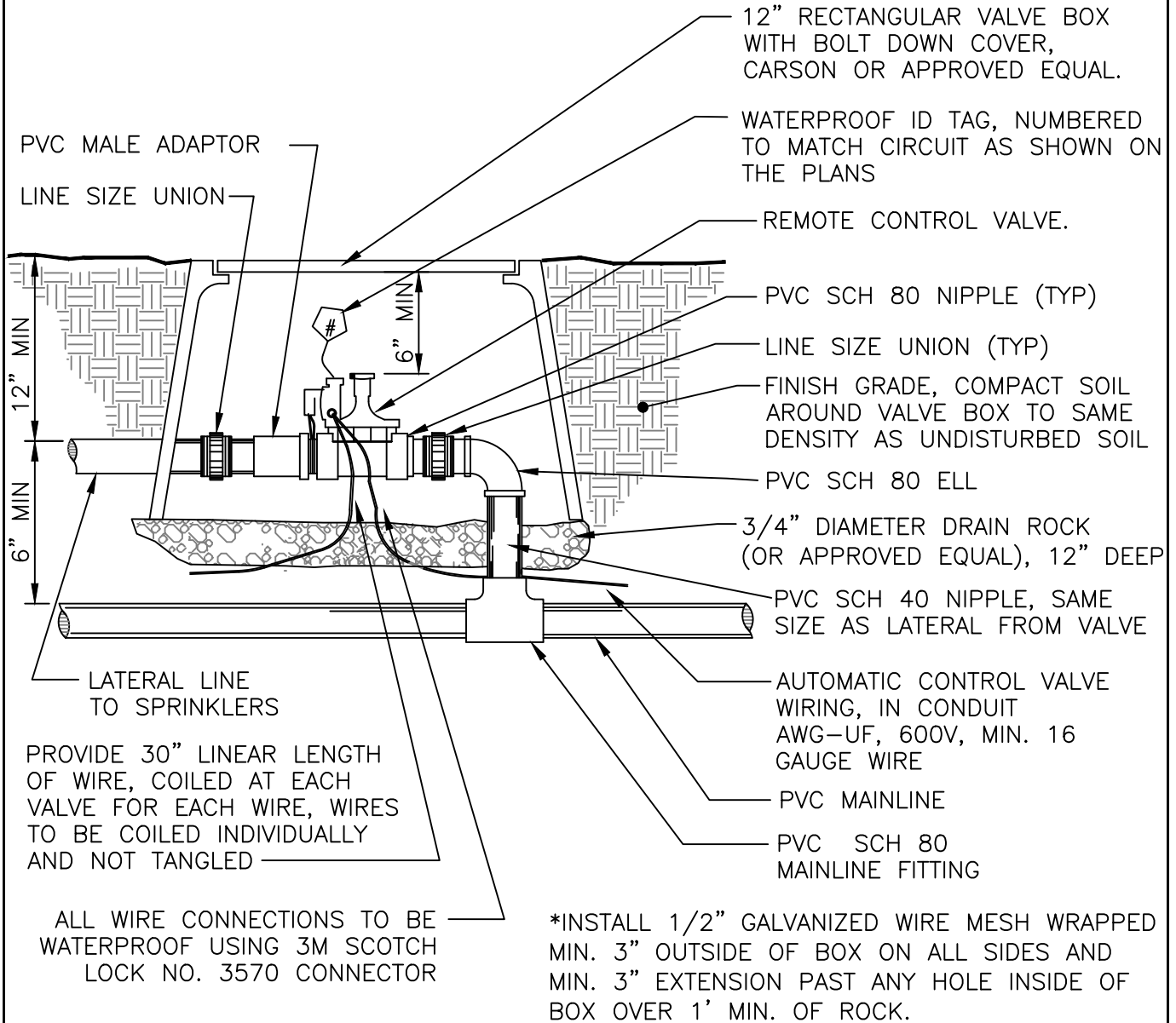
Date: JULY 2024

Drawing No:

L-5

NOTES:

1. All wire shall be installed per local codes.
2. One valve for each valve box only.
3. Valve boxes to be located in shrub areas and grouped together (not in turf).
4. For irrigation, all pipes, tags and valve boxes are to be purple color (Pantone 512) with language shown on standard detail No. RW-2.
7. Brand box lid with appropriate designation. Branding shall correspond with tag. Heat stamp station number shown on the plans onto the lid of the valve box and it shall be 2". All boxes shall be bolted down.



NOT TO SCALE

Approved by:

[Signature]
City of Lathrop
City Engineer

No	Revised	Date

CITY OF LATHROP
DEPARTMENT OF PUBLIC WORKS

CONTROL VALVE
(TYPICAL)

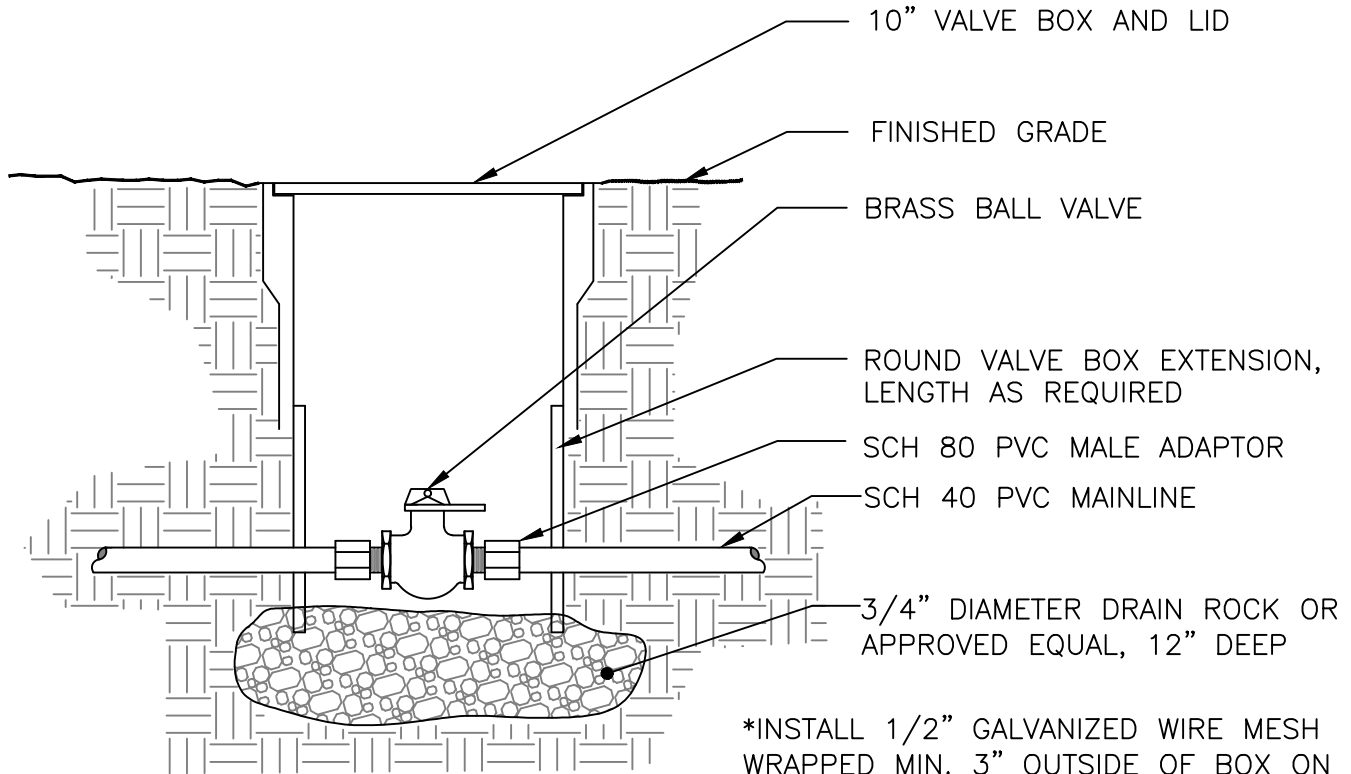


**STANDARD
DETAIL**

Date: JULY 2024

Drawing No:

L-6

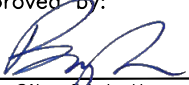


*INSTALL 1/2" GALVANIZED WIRE MESH WRAPPED MIN. 3" OUTSIDE OF BOX ON ALL SIDES AND MIN. 3" EXTENSION PAST ANY HOLE IN SIDE OF BOX OVER 1' MIN. OF ROCK.

NOTES:

1. For irrigation, all pipes, tags, valve boxes and lids are to be purple color and marked as shown on Standard Detail RW-2.
2. Brand box lid with appropriate designation. Branding shall correspond with tag. All boxes shall be bolt down.

NOT TO SCALE

Approved by:		
		
City of Lathrop City Engineer		
No	Revised	Date

CITY OF LATHROP
DEPARTMENT OF PUBLIC WORKS

GATE VALVE



**STANDARD
DETAIL**

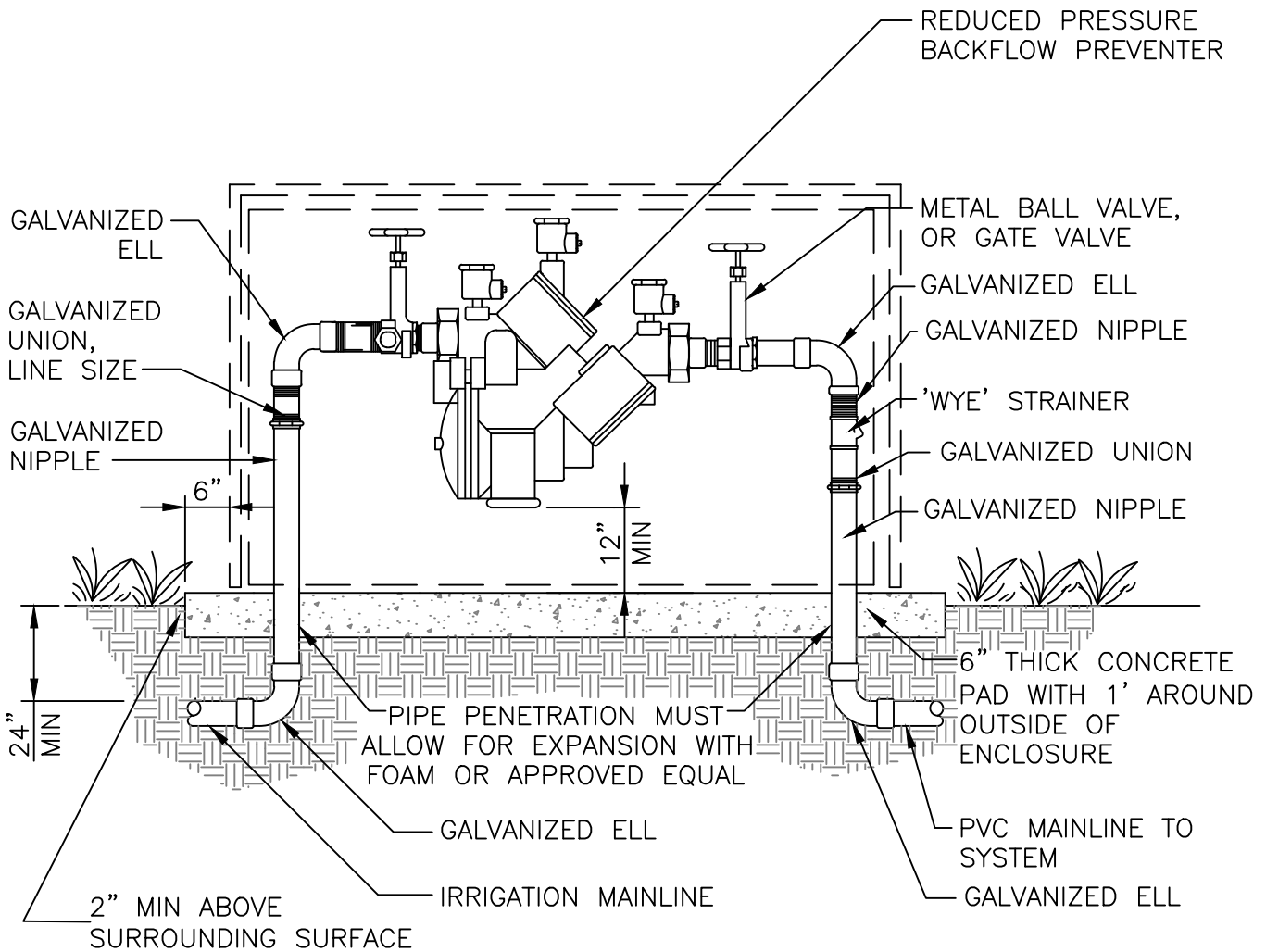
Date: **JULY 2024**

Drawing No:

L-7

NOTES:

1. All galvanized pipe below finish grade to receive two wraps of 10 Mil tape.
2. Backflow preventer to be located in shrub area and screened from view with shrubs.
3. For irrigation, all pipes, tags and valve boxes are to be purple color and shall have language shown on Standard Detail No. RW-2.
4. All assemblies must be tested by a certified backflow prevention tester and reports shall be sent to backflows@ci.lathrop.ca.us
5. Enclosure shall be sized to adequately enclose the preventer.
6. Enclosure shall be powder coated pantone 512 for recycled water and blue for potable water and green for landscape
7. Any lines less than 2" diameter will need polar barrier blanket



USE FEBCO 825Y REDUCED PRESSURE BACKFLOW.

NOT TO SCALE

Approved by:		
City of Lathrop City Engineer		
No	Revised	Date

CITY OF LATHROP
DEPARTMENT OF PUBLIC WORKS

BACKFLOW PREVENTER



**STANDARD
DETAIL**

Date: **JULY 2024**

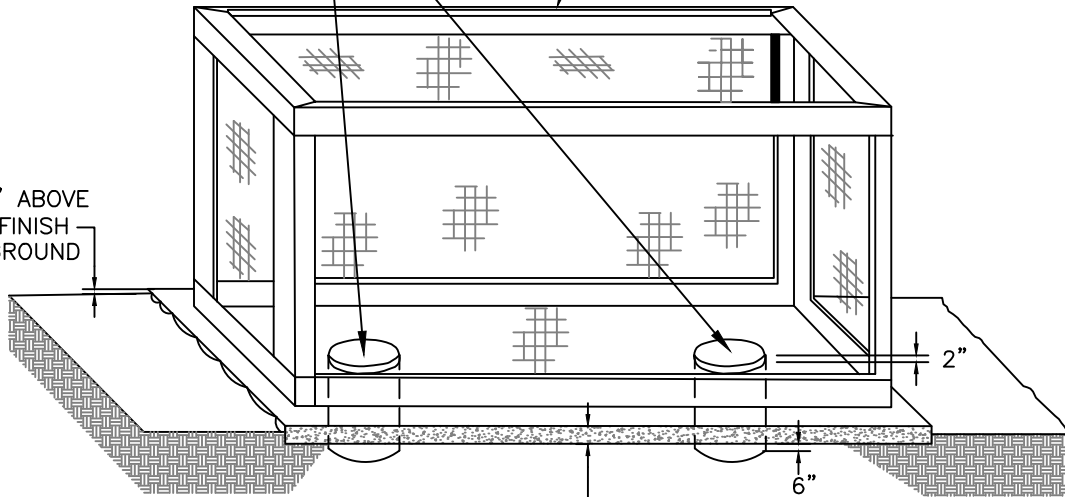
Drawing No:

L-8

PIPE PENETRATION MUST ALLOW FOR EXPANSION AND CONTRACTION WITH FOAM OR APPROVED EQUAL.

EXPANDED METAL BACKFLOW PREVENTER ENCLOSURE POWDER COATED GREEN FOR LANDSCAPE

2" ABOVE FINISH GROUND



MIN. 6" THICK CONCRETE PAD TO EXTEND 1' OUT FROM ALL SIDES OF ENCLOSURE

NOTES:

1. On slopes: pads shall be of sufficient thickness to extend 3" below the lowest point of the finish grade.
2. Embed corner hold-down assemblies in concrete equipment pad per manufacturer's specifications.
3. Size enclosure to provide a minimum of 6" clearance between backflow device and enclosure.
5. Enclosure shall be sized to adequately enclose the preventer.

NOT TO SCALE

Approved by:		
City of Lathrop City Engineer		
No	Revised	Date

CITY OF LATHROP
DEPARTMENT OF PUBLIC WORKS
BACKFLOW PREVENTER
ENCLOSURE

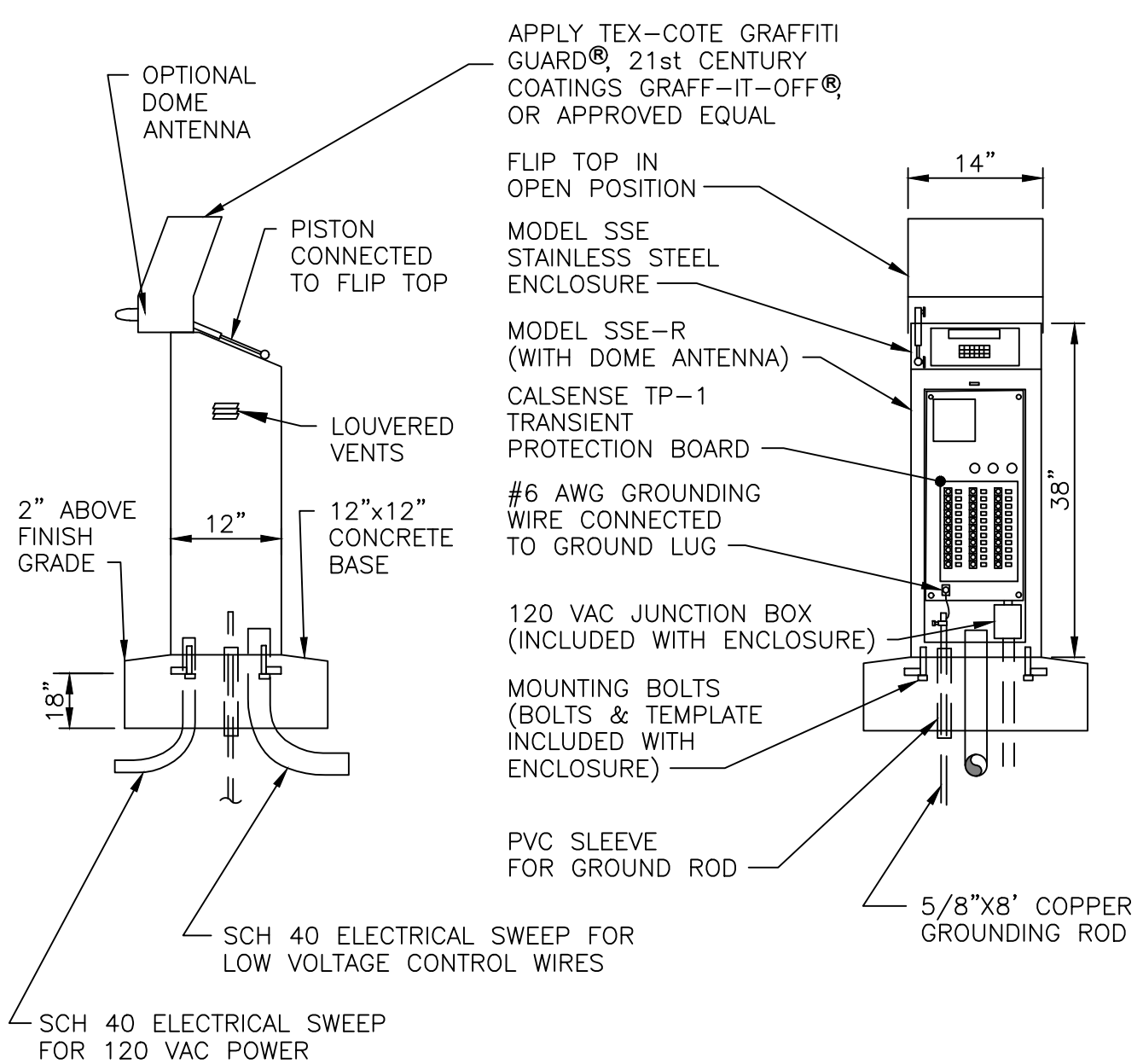


STANDARD
DETAIL

Date: **JULY 2024**

Drawing No:

L-9

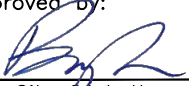


NOTES:

1. Calcense Controller CS3000 panel mounted flush on face of enclosure at a 25° angle for easy access and viewing.
2. Provide GFI outlet with switch.
3. Shall be certified prior to acceptance.
4. Use 2-wire RCA interconnect cable system.
5. 95% Compaction for sub-grade.

NOT TO SCALE

Approved by:



City of Lathrop
City Engineer

No	Revised	Date

CITY OF LATHROP
DEPARTMENT OF PUBLIC WORKS

**PEDESTAL
CONTROLLER**



**STANDARD
DETAIL**

Date: **JULY 2024**
Drawing No:

L-10

CS3000 CONTROLLER SPECIFICATIONS

POWER

INPUT REQUIREMENT: 120VAC SINGLE PHASE, 1AMP STATION
OUTPUTS: 24VAC, 2.0AMPS MAX (SHORT PROTECTED)

PHYSICAL

HEIGHT: 16.25"
WIDTH: 14.50"
DEPTH: 7.25"
MATERIAL: 16 GAUGE, STAINLESS STEEL

COMMUNICATION OPTIONS

CS3-GR 3.5G CELLULAR MODEM
CS3-EN $\frac{10}{100}$ MBPS ETHERNET DEVICE
CS3-WEN 802.11B/G WIRELESS ETHERNET (WI-FI) DEVICE
CS3-SR SPREAD SPECTRUM RADIO
CS3-M-KIT WIRE-LINKABLE TO SHARE COMMUNICATION WITH MULTIPLE CONTROLLERS

OTHER OPTIONS

CS3-2W-OPT INTERFACE FOR 2-WIRE
CS3-FL FLOWSENSE™ SOFTWARE TO OPERATE MULTIPLE CONTROLLERS SHARING FLOW
CS3-W-KIT WEATHER INTERFACE FOR ET GAGE, TIPPING RAIN BUCKET, AND WIND GAGE
CS3-8ST-KIT 8-STATION CARD PLUS TERMINAL
CS3-L-KIT INTERFACE FOR FOUR LIGHT CIRCUITS

NOT TO SCALE

Approved by:



City Of Lathrop
City Engineer

No	Revised	Date

CITY OF LATHROP
DEPARTMENT OF PUBLIC WORKS
CS3000

**CONTROLLER
SPECIFICATIONS**



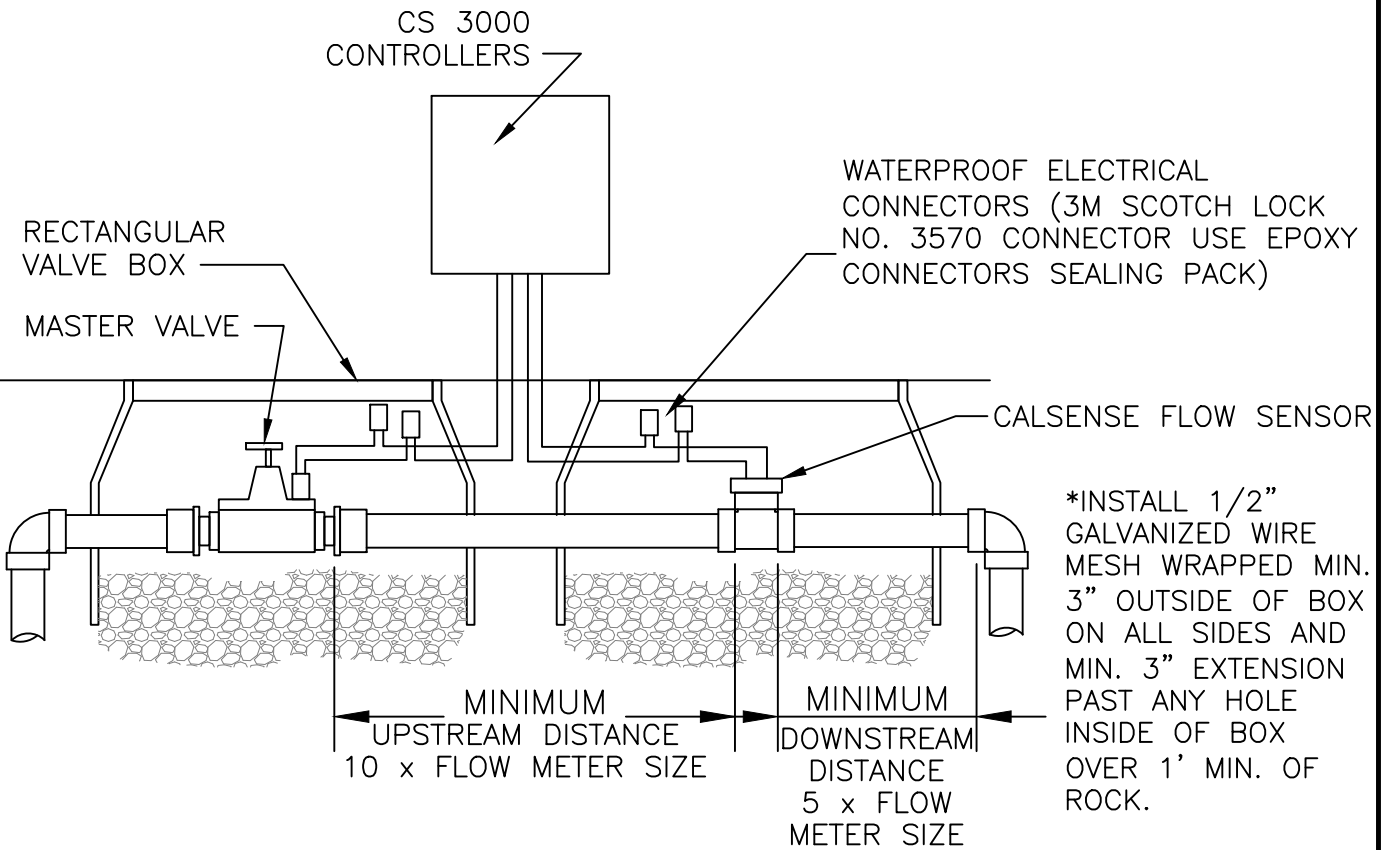
**STANDARD
DETAIL**

Date: **JULY 2024**

Drawing No:

L-11

PIPE SIZING CHART		
F.M. SIZE	UPSTREAM LENGTH	DOWNSTREAM LENGTH
1"	10"	5"
1.25"	12.5"	6.25"
1.5"	15"	7.5"
2"	20"	10"
3"	30"	15"



*INSTALL 1/2" GALVANIZED WIRE MESH WRAPPED MIN. 3" OUTSIDE OF BOX ON ALL SIDES AND MIN. 3" EXTENSION PAST ANY HOLE INSIDE OF BOX OVER 1' MIN. OF ROCK.

NOTES:

1. See L-10 for controller installation.
2. For irrigation, all pipes, tags and valve boxes are to be purple color with language shown on standard detail No. RW-2.
3. Use 2-wire RCA option system interconnect cable.
4. Brand box lid with appropriate designation. Branding shall correspond with tag. All boxes shall be bolt down.

NOT TO SCALE

Approved by:		
City of Lathrop City Engineer		
No	Revised	Date

CITY OF LATHROP
DEPARTMENT OF PUBLIC WORKS
MASTER VALVE AND FLOW SENSORS



**STANDARD
DETAIL**

Date: **JULY 2024**

Drawing No:

L-12

WATERPROOF ID TAG
NUMBERED TO MATCH
THE CONTROLLER CIRCUIT

FINISH GRADE

MINIMUM 12" ROUND
VALVE BOX

PROVIDE 30"
MIN OF COILED
CONTROLLER
WIRE ON EACH
WIRE STUB

MAINLINE PIPING

CONTROLLER WIRES IN
CONDUIT

BUNDLE WIRING TOGETHER
WITH PLASTIC ZIP TIES TO
EQUAL AT 10' O.C.


3/4" DIA DRAIN
ROCK OR EQUAL,
12" DEEP

*INSTALL 1/2" GALVANIZED WIRE MESH
WRAPPED MIN. 3" OUTSIDE OF BOX ON
ALL SIDES AND MIN. 3" EXTENSION PAST
ANY HOLE IN SIDE OF BOX OVER 1' MIN.
OF ROCK.

NOTE:

1. For irrigation, all pipes, tags and valve boxes are to be purple color with language shown on Standard Detail RW-2.
2. 2 wire system requires 3M epoxy connections.
3. Brand box lid with appropriate designation. Branding shall correspond with tag. All boxes shall be bolt down.

NOT TO SCALE

Approved by:		
		
City of Lathrop City Engineer		
No	Revised	Date

CITY OF LATHROP
DEPARTMENT OF PUBLIC WORKS



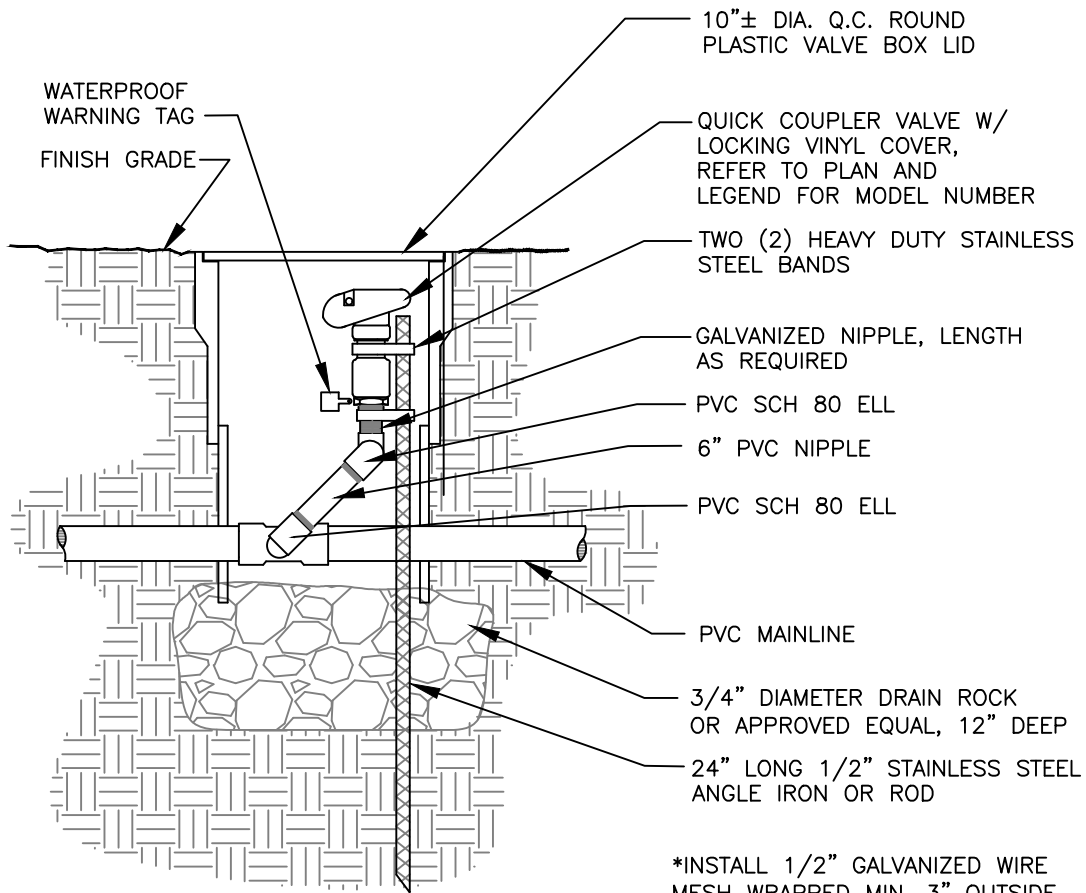
CONTROL WIRE SPLICE

**STANDARD
DETAIL**

Date: **JULY 2024**

Drawing No:

L-13



*INSTALL 1/2" GALVANIZED WIRE MESH WRAPPED MIN. 3" OUTSIDE OF BOX ON ALL SIDES AND MIN. 3" EXTENSION PAST ANY HOLE IN SIDE OF BOX OVER 1' MIN. OF ROCK.

NOTES:

1. All Nipples and Joints to be Schedule 80 PVC.
2. For recycled water irrigation, only quick couplers that differ from potable water quick couplers shall be allowed.
3. For irrigation, all pipes, tags and valve boxes are to be purple color with language shown on Standard Detail No. RW-2.
4. Brand box lid with appropriate designation. Branding shall correspond with tag.

NOT TO SCALE

Approved by:		
City of Lathrop City Engineer		
No	Revised	Date

CITY OF LATHROP
DEPARTMENT OF PUBLIC WORKS



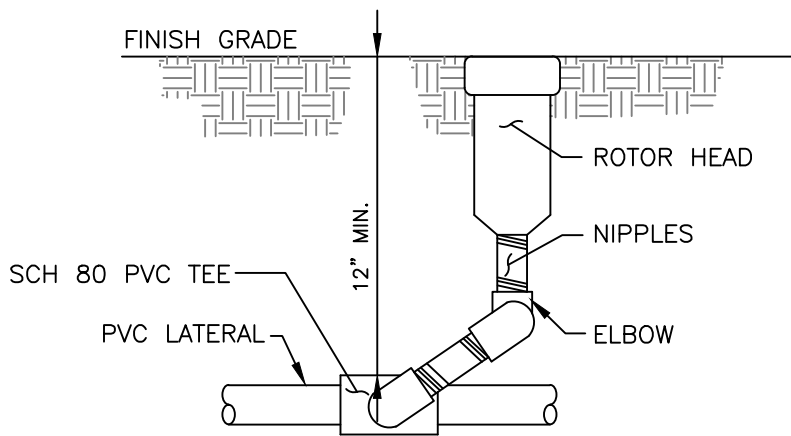
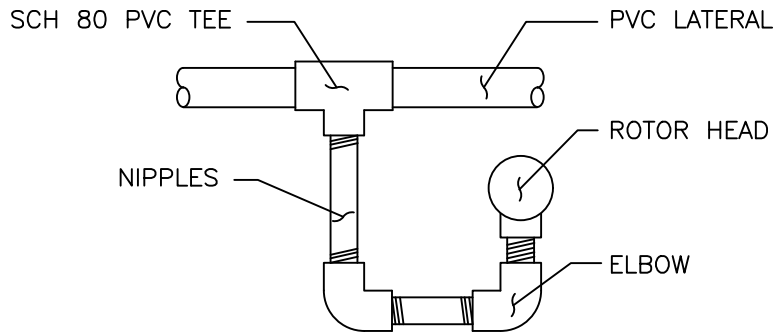
QUICK COUPLER

**STANDARD
DETAIL**

Date: **JULY 2024**

Drawing No:

L-14

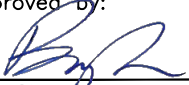


TRIPLE SWING JOINT WITH ROTOR

NOTE:

1. All Nipples and Joints to be Schedule 80 PVC.
2. Use Pre-manufactured swing joints, SCH 80 PVC or approved equal.
3. Hunter I Series Sprinklers or approved equal.

NOT TO SCALE

Approved by:		
		
City of Lathrop City Engineer		
No	Revised	Date

CITY OF LATHROP
DEPARTMENT OF PUBLIC WORKS

ROTOR SPRINKLERS

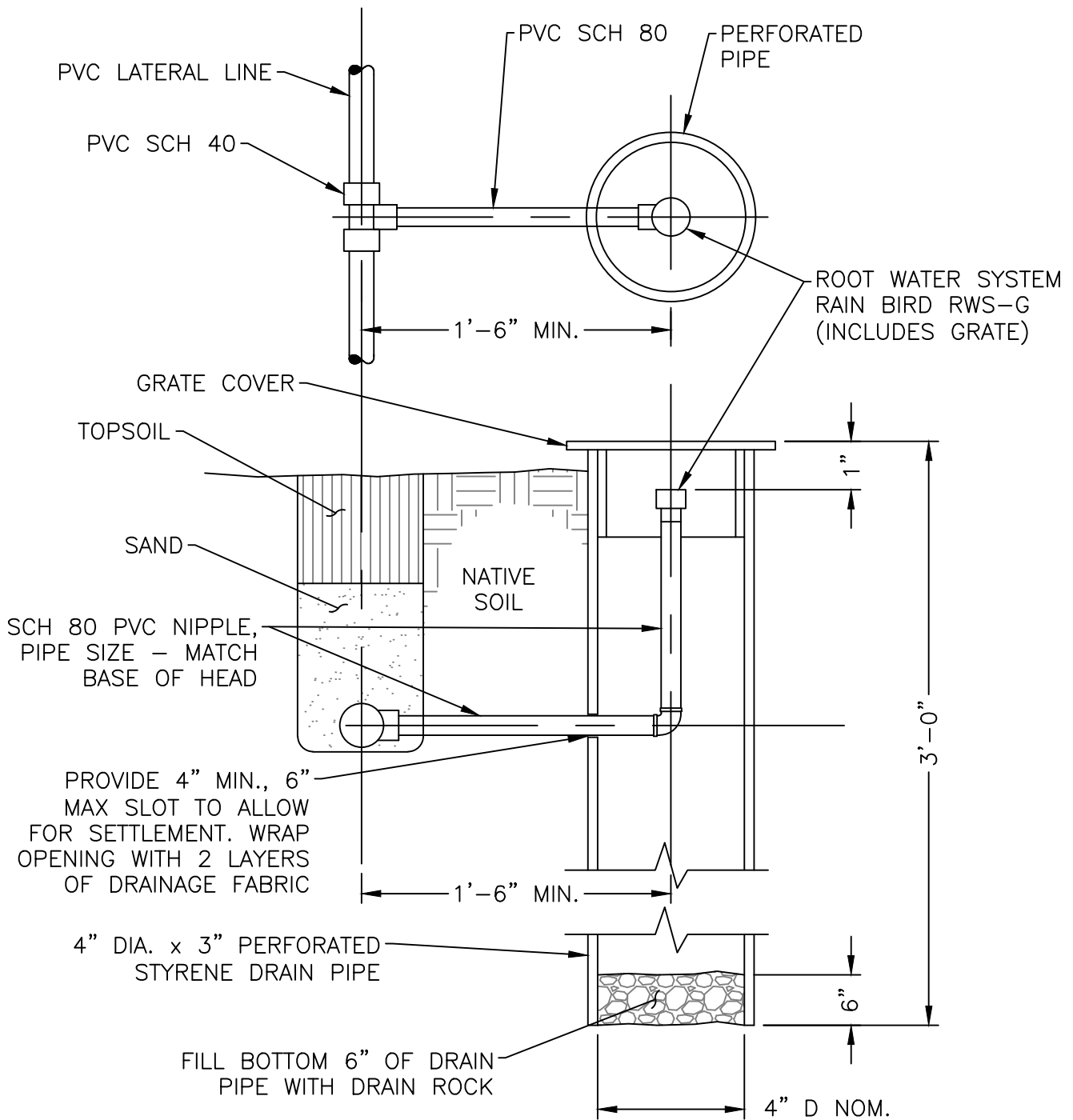


**STANDARD
DETAIL**

Date: **JULY 2024**

Drawing No:

L-15



NOTE

1. For irrigation (use recycled water), all pipes, tags and valve boxes are to be purple color (Pantone 512).

NOT TO SCALE

Approved by:		
City of Lathrop City Engineer		
No	Revised	Date

CITY OF LATHROP
DEPARTMENT OF PUBLIC WORKS

TREE BUBBLER

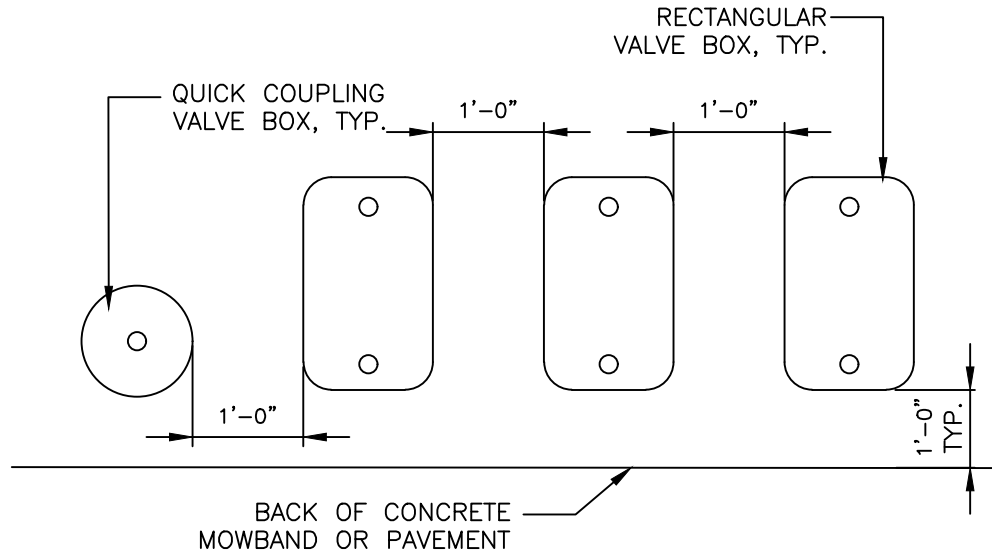


**STANDARD
DETAIL**

Date: **JULY 2024**

Drawing No:

L-16



Notes:

1. Center valve box over remote control valve to facilitate servicing valve.
2. Set RCV and valve box assembly in groundcover/shrub areas.
3. Set boxes parallel to each other and perpendicular to edge of adjacent paving.
4. Avoid heavily compacting soil around valve boxes to prevent collapse and deformation of valve boxes.
5. Brand box lid with appropriate designation. Branding shall correspond with tag. All boxes shall be bolt down.

NOT TO SCALE

Approved by:		
		
City of Lathrop City Engineer		
No	Revised	Date

CITY OF LATHROP
DEPARTMENT OF PUBLIC WORKS
VALVE BOX LAYOUT



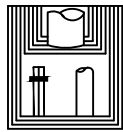
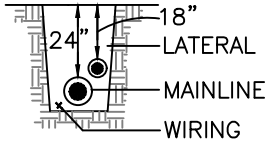
**STANDARD
DETAIL**

Date: **JULY 2024**

Drawing No:

L-17

MAINLINE,
LATERAL AND
WIRING

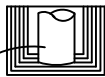
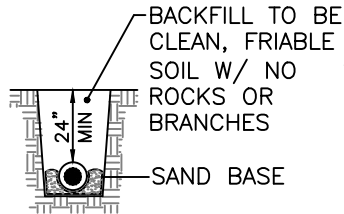


10' ON
CENTER



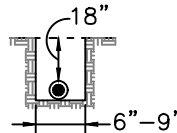
TAPE AND
BUNDLE WIRING
AT 10' INTERVALS

MAINLINE



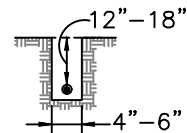
ALL MAINLINES SHALL
BE INSTALLED PER
MANUFACTURER'S
SPECIFICATIONS

PLASTIC
LATERAL



SNAKE ALL PLASTIC PIPING
IN TRENCHES FROM SIDE
TO SIDE AS SHOWN

120 VOLT
IN CONDUIT



INSTALL ALL 120
VOLT VAC WIRE
IN CONDUIT PER
LOCAL AND UBC
CODES

NOT TO SCALE

Approved by:

City of Lathrop
City Engineer

No	Revised	Date

CITY OF LATHROP
DEPARTMENT OF PUBLIC WORKS

**IRRIGATION
PIPING AND WIRING**

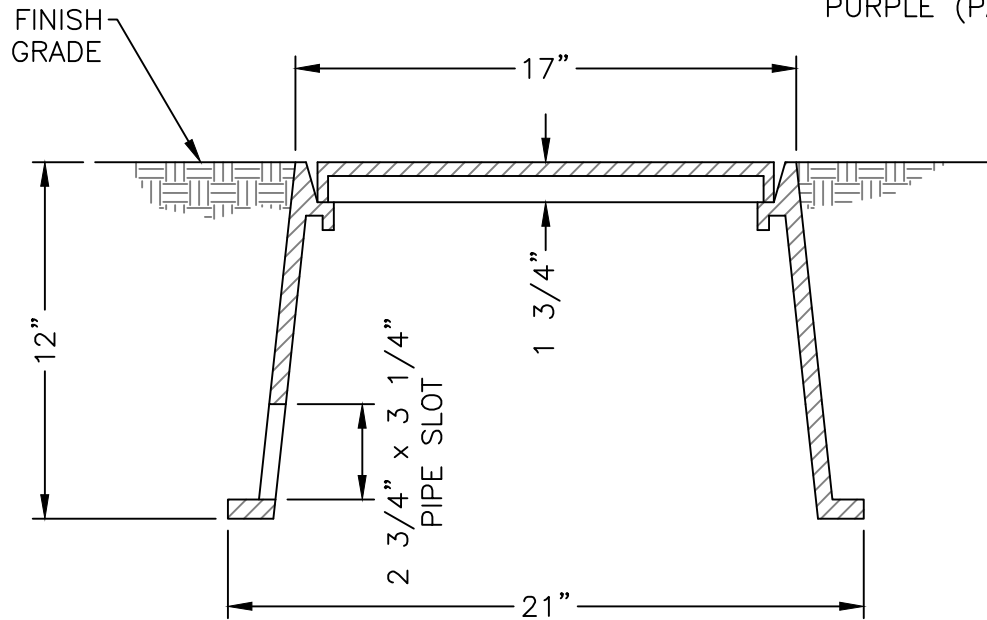
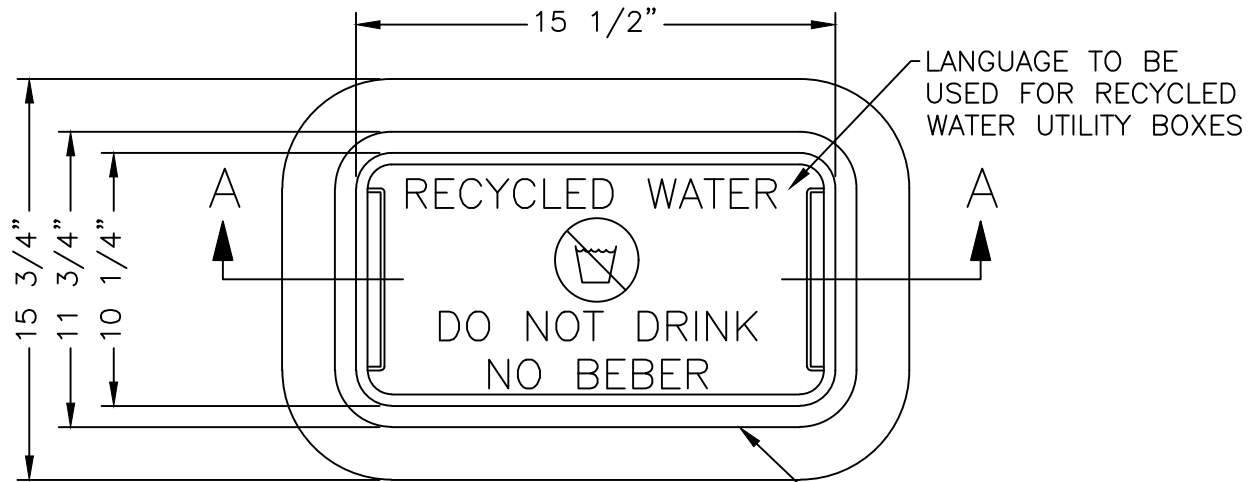


**STANDARD
DETAIL**

Date: **JULY 2024**

Drawing No:

L-18



SECTION A-A

NOTES:

1. Brand box lid with appropriate designation. Branding shall correspond with tag. All boxes shall be bolt down.

NOT TO SCALE

Approved by:		
City of Lathrop City Engineer		
No	Revised	Date

CITY OF LATHROP
DEPARTMENT OF PUBLIC WORKS

UTILITY BOX

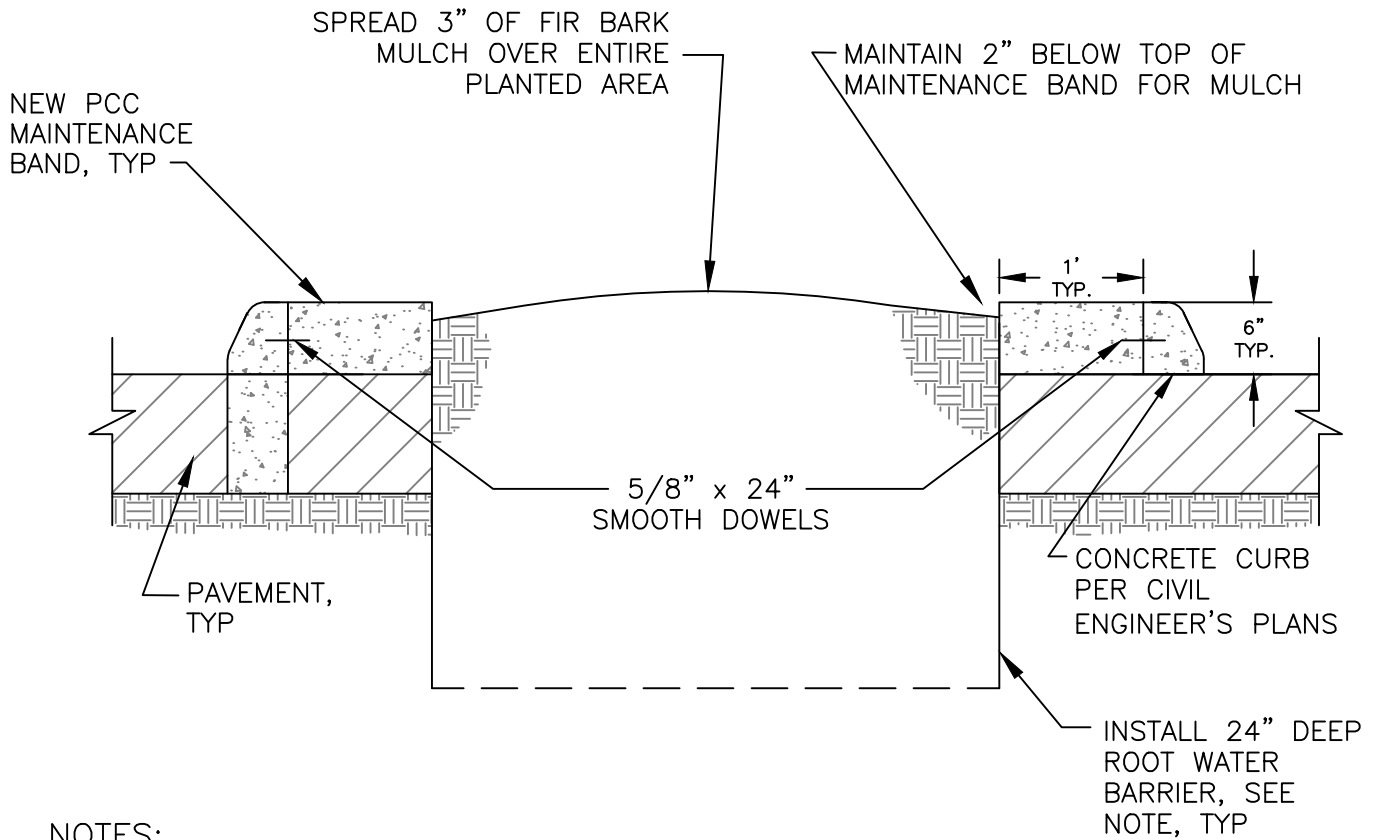


**STANDARD
DETAIL**

Date: **JULY 2024**

Drawing No:

L-19



NOTES:

1. Water barrier shall be "Deep Root Water Barrier", manufactured by Deep Root Corporation, or approved equal.
2. Optional extruded curb and vertical curb as specified in plans.
3. All bark must be approved by City Engineer.
4. 5' either side of tree trunk within 5' of concrete

NOT TO SCALE

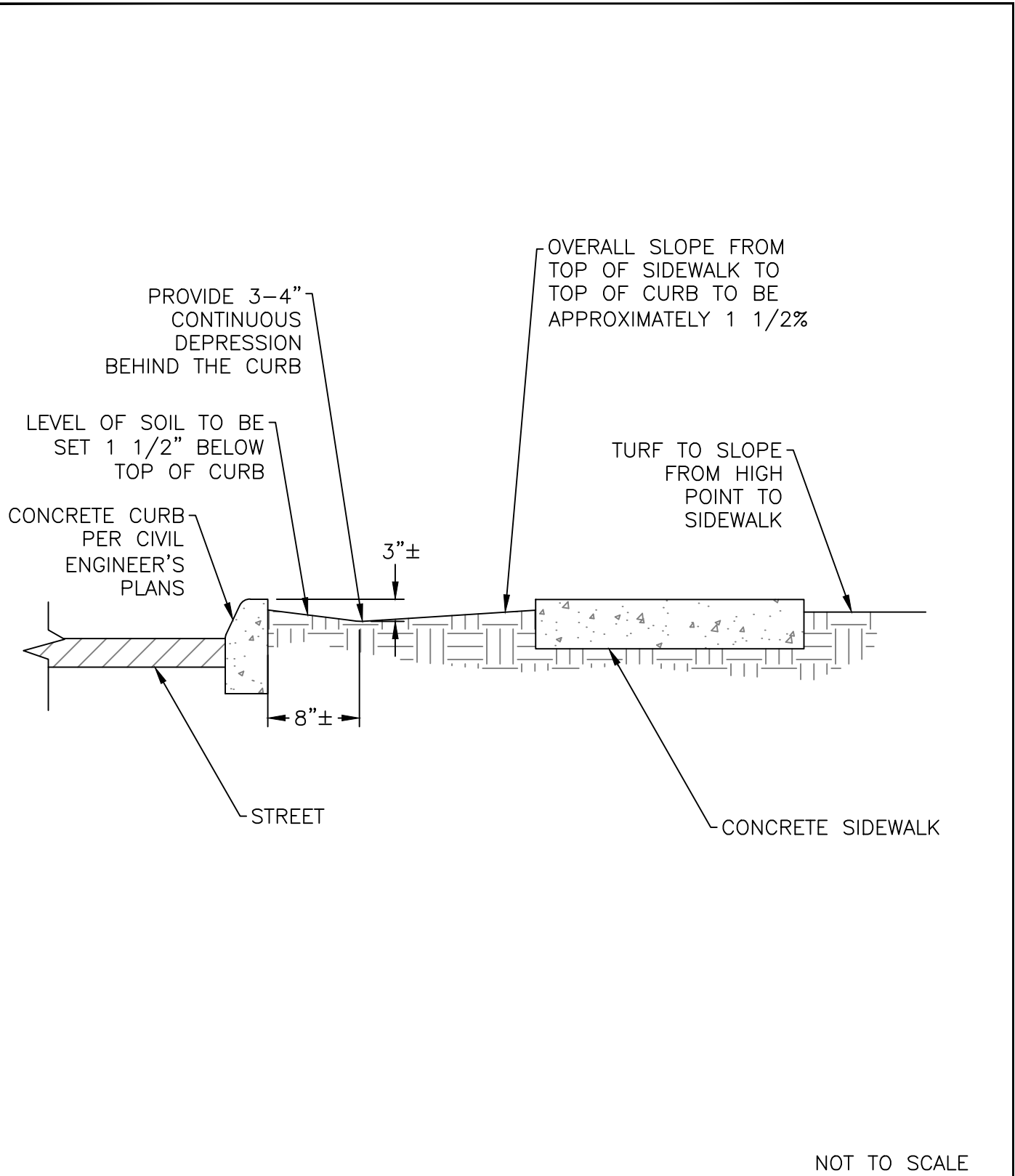
Approved by:		
City of Lathrop City Engineer		
No	Revised	Date

CITY OF LATHROP
 DEPARTMENT OF PUBLIC WORKS
MEDIAN ISLAND
MAINTENANCE
BAND DETAIL
 (FOR EXISTING CURB)



STANDARD
DETAIL

Date: **JULY 2024**
 Drawing No:
L-20



Approved by:

[Signature]

City of Lathrop
City Engineer

No	Revised	Date

CITY OF LATHROP
DEPARTMENT OF PUBLIC WORKS
PARKWAY SWALE



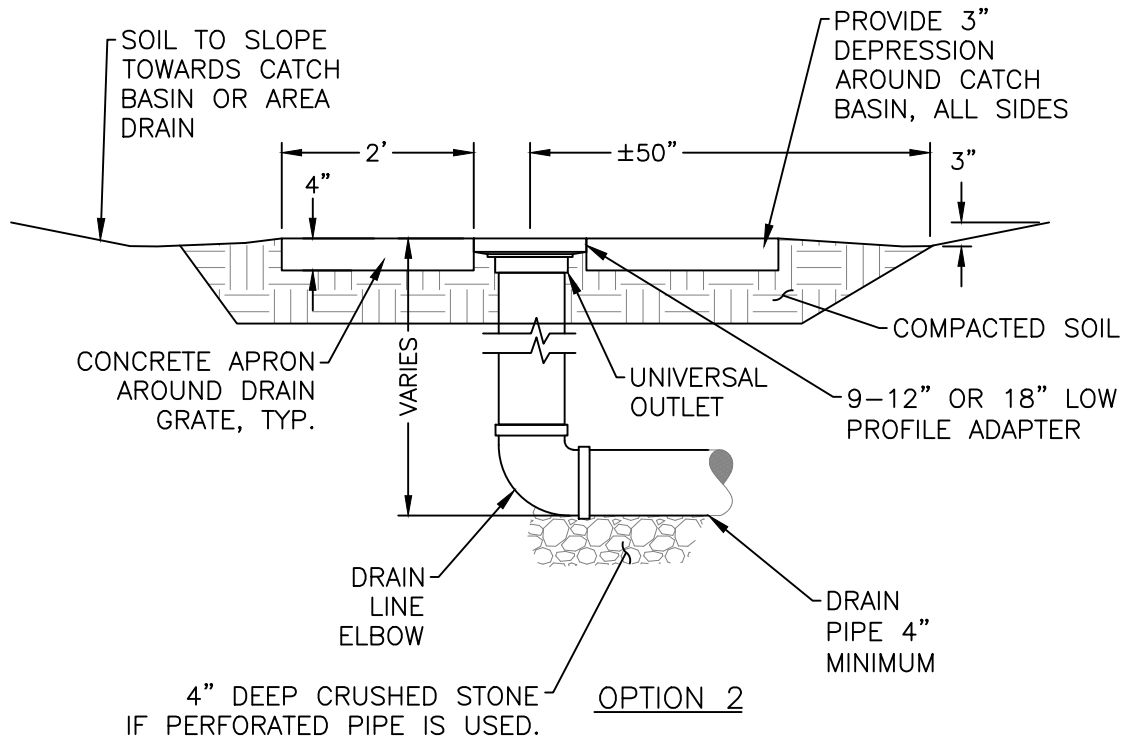
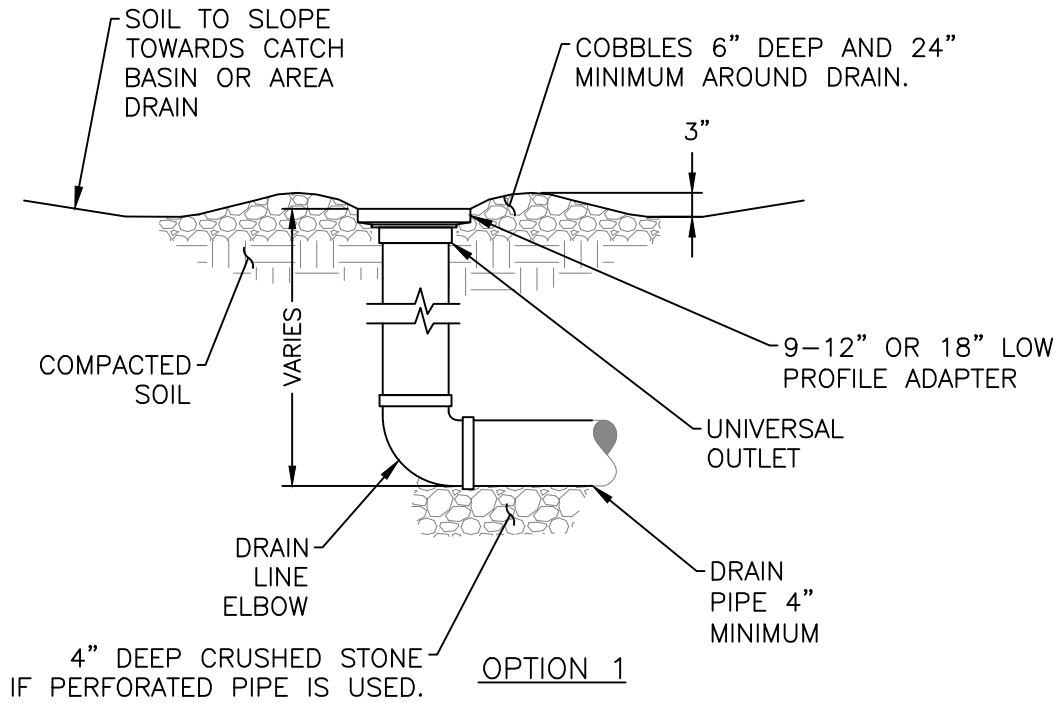
NOT TO SCALE

**STANDARD
DETAIL**

Date: **JULY 2024**

Drawing No:

L-21



NOT TO SCALE

Approved by:

[Signature]

City of Lathrop
City Engineer

No	Revised	Date

CITY OF LATHROP
DEPARTMENT OF PUBLIC WORKS

AREA DRAIN

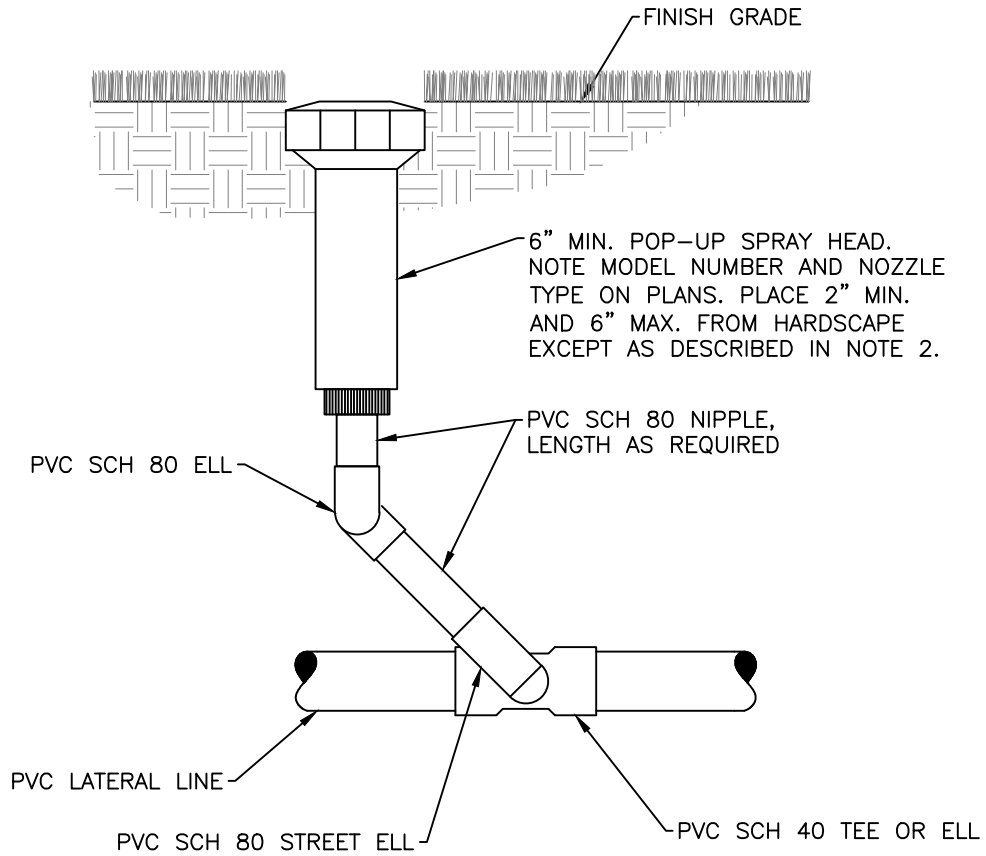


**STANDARD
DETAIL**

Date: **JULY 2024**

Drawing No:

L-22



NOTE

1. For recycled water irrigation, all pipes and spray heads are to be purple color. Signs shall be posted as shown in RW-2.
2. For shrubs, install a 12-inch min, pop-up spray head.
3. For turf, install a 8-inch min. gear rotor pop-up spray head.

NOT TO SCALE

Approved by:		
		
City of Lathrop City Engineer		
No	Revised	Date

CITY OF LATHROP
DEPARTMENT OF PUBLIC WORKS

**SHRUB POP-UP
SPRAY HEAD**



**STANDARD
DETAIL**

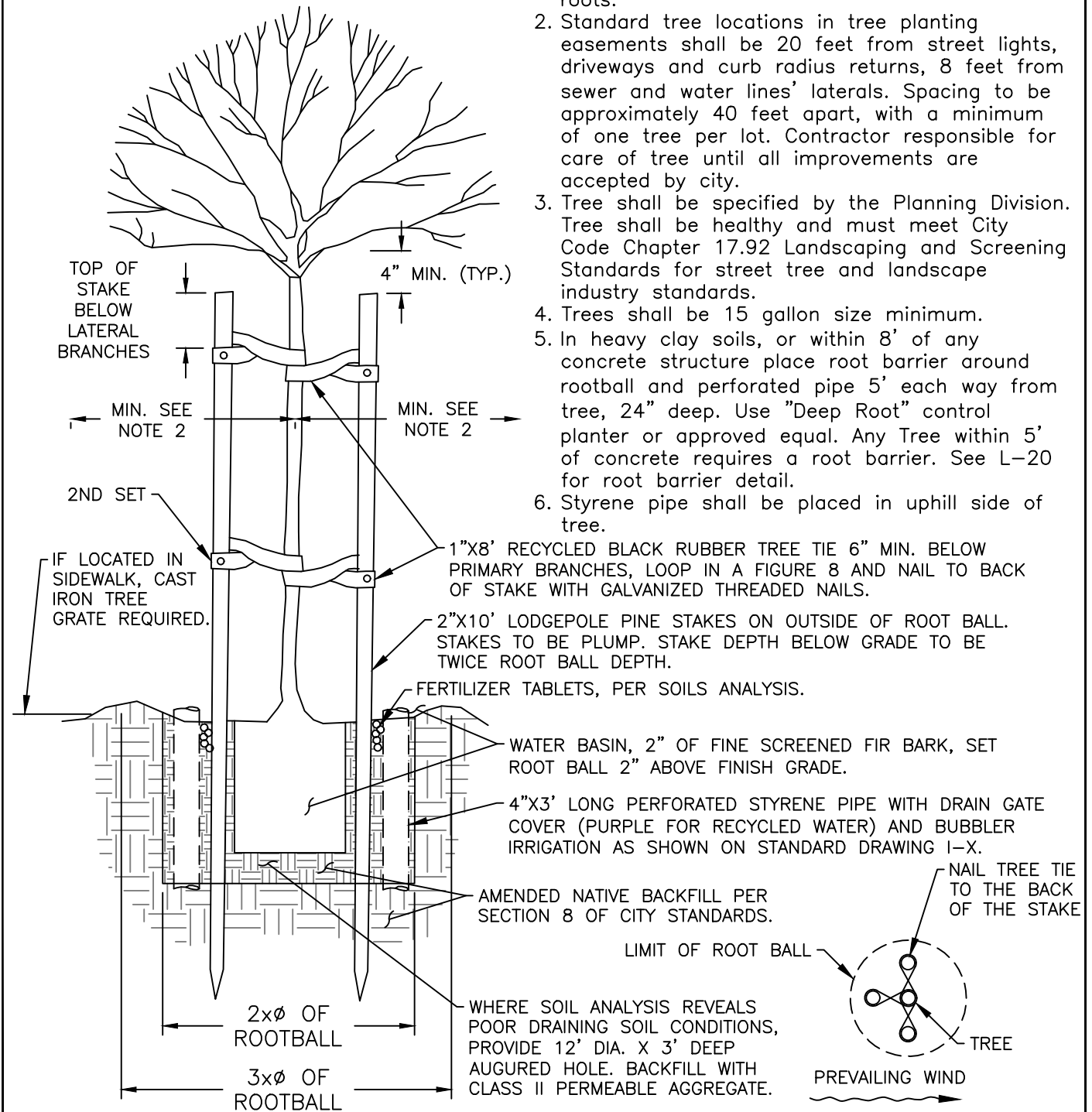
Date: **JULY 2024**

Drawing No:

L-23

NOTES:

1. Tree shall be free of injury and disease and shall have no circular, damaged, or girdling roots.
2. Standard tree locations in tree planting easements shall be 20 feet from street lights, driveways and curb radius returns, 8 feet from sewer and water lines' laterals. Spacing to be approximately 40 feet apart, with a minimum of one tree per lot. Contractor responsible for care of tree until all improvements are accepted by city.
3. Tree shall be specified by the Planning Division. Tree shall be healthy and must meet City Code Chapter 17.92 Landscaping and Screening Standards for street tree and landscape industry standards.
4. Trees shall be 15 gallon size minimum.
5. In heavy clay soils, or within 8' of any concrete structure place root barrier around rootball and perforated pipe 5' each way from tree, 24" deep. Use "Deep Root" control planter or approved equal. Any Tree within 5' of concrete requires a root barrier. See L-20 for root barrier detail.
6. Styrene pipe shall be placed in uphill side of tree.



NOT TO SCALE

Approved by:

[Signature]

City of Lathrop
City Engineer

No	Revised	Date

CITY OF LATHROP
DEPARTMENT OF PUBLIC WORKS

TREE PLANTING

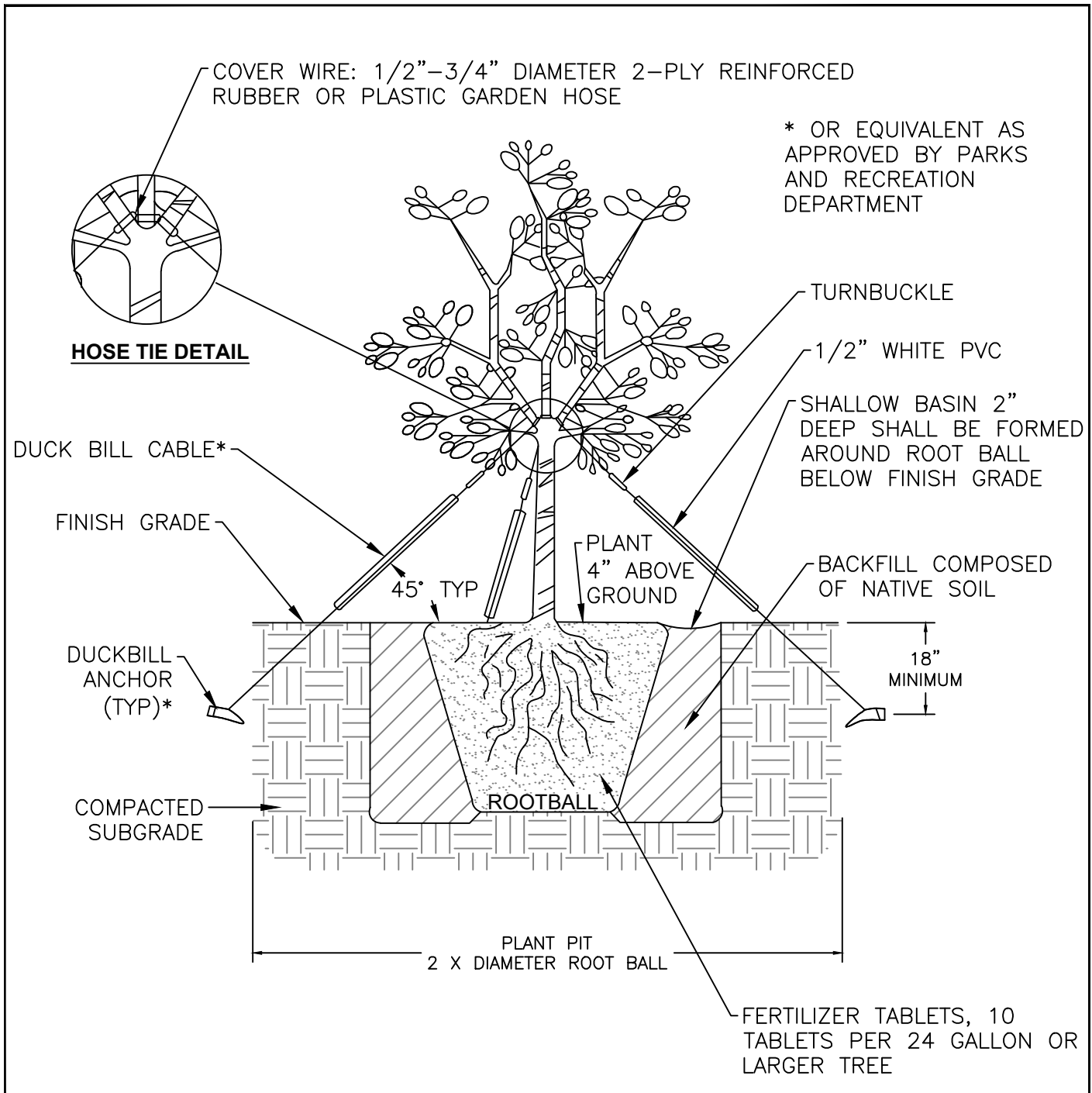


**STANDARD
DETAIL**

Date: **JULY 2024**

Drawing No:

L-24



NOTE:

1. All 24" box trees or larger, including multi-trunk specimens, shall be guyed as shown or as directed by City.
2. See L-20 for root barrier detail.

NOT TO SCALE

Approved by:



City of Lathrop
City Engineer

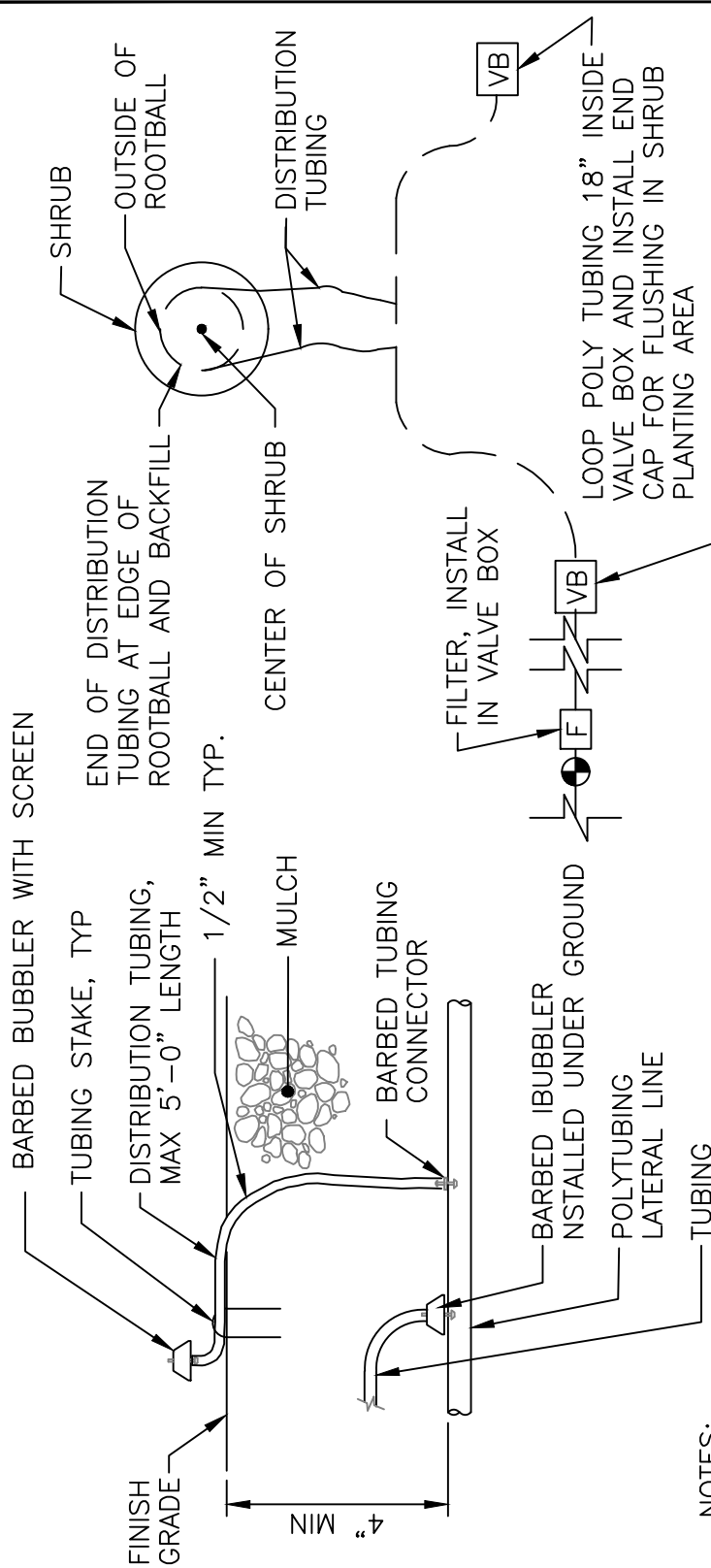
No	Revised	Date

CITY OF LATHROP
DEPARTMENT OF PUBLIC WORKS
TYPICAL TREE
GUYING FOR 24" - 36" BOX



**STANDARD
DETAIL**

Date: **JULY 2024**
Drawing No:
L-25



NOTES:

1. PROVIDE A BUBBLER SYSTEM FOR ALL SHRUBS AND GROUNDCOVER.
2. ACTUAL LAYOUT OF BUBBLER SYSTEM SHALL BE DETERMINED IN THE FIELD USING THE IRRIGATION DETAILS AND EMITTER SCHEDULE AS A GUIDE.
3. BUBBLER SHALL BE PRESSURE COMPENSATING.
4. FOR RECYCLED WATER IRRIGATION, ALL PIPES, TAG AND VALVE BOXES ARE TO BE PURPLE COLOR.
5. EVERY BUBBLER NEEDS A FILTER AND THE CORRECT FILTER

SCHEDULE		
PLANT TYPE	# OF EMITTERS PER PLANT	REMARKS
SHRUBS	2	EQUALLY SPACED AROUND PLANT.
GROUNDCOVERS	2	EQUALLY SPACED AROUND PLANT.

NOT TO SCALE

**STANDARD
DETAIL**

Date: **JULY 2024**
Drawing No:

L-26

Approved by:



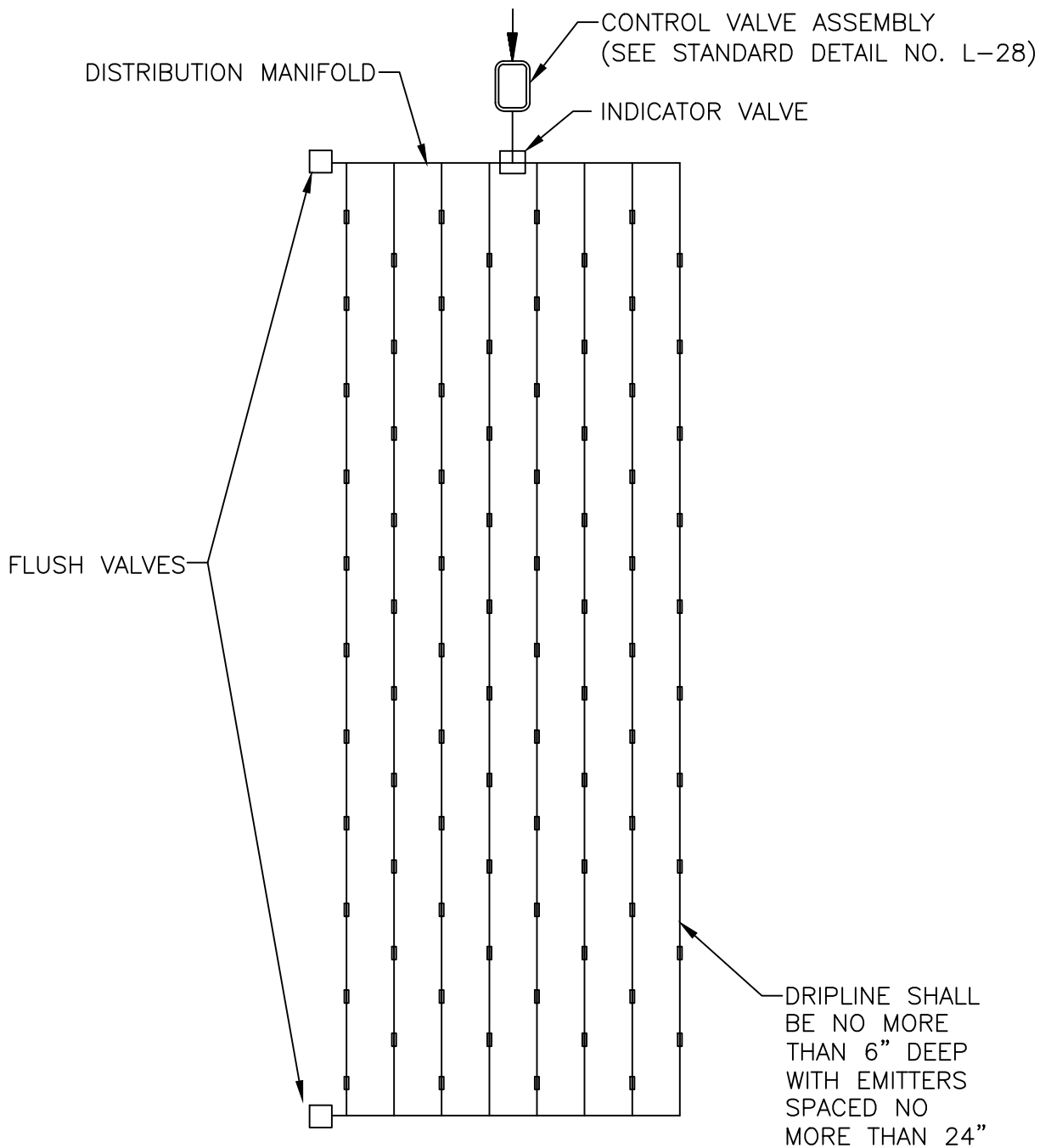
City of Lathrop
City Engineer

No	Revised	Date

CITY OF LATHROP
DEPARTMENT OF PUBLIC WORKS

BUBBLER DETAILS





NOTES:

1. Subsurface dripfield layout to be used in special case only with city engineer approval

NOT TO SCALE

Approved by:		
City of Lathrop City Engineer		
No	Revised	Date

CITY OF LATHROP
DEPARTMENT OF PUBLIC WORKS

**TYPICAL
SUBSURFACE
DRIPFIELD LAYOUT**

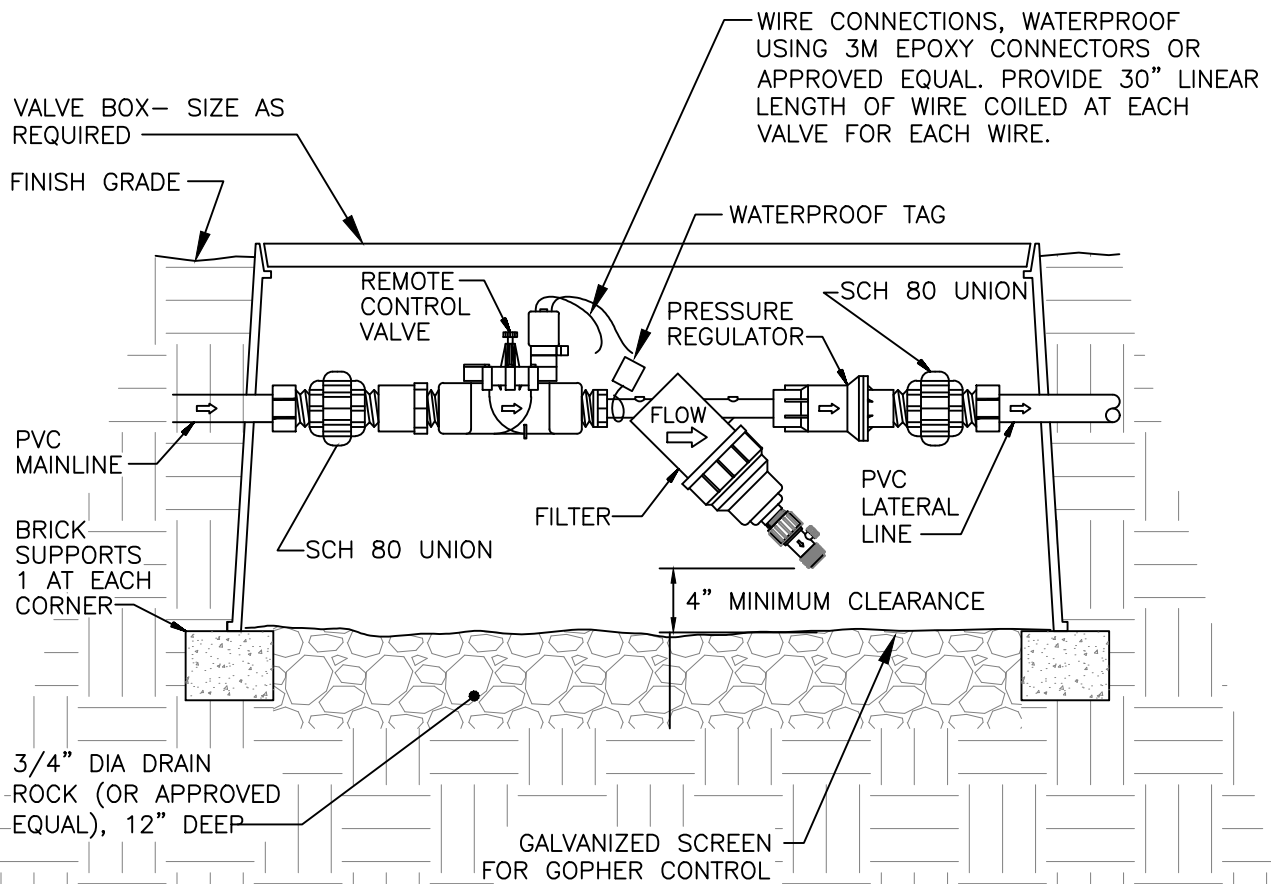


**STANDARD
DETAIL**

Date: **JULY 2024**

Drawing No:

L-27



*INSTALL 1/2" GALVANIZED WIRE MESH WRAPPED MIN. 3" OUTSIDE OF BOX ON ALL SIDES AND MIN. 3" EXTENSION PAST ANY HOLE IN SIDE OF BOX OVER 1' MIN. OF ROCK.

NOTES:

1. See L-6 for control valve installation notes.
2. For irrigation, all pipes, tags and valve boxes are to be purple color with language as shown on RW-2.
3. Brand box lid with appropriate designation. Branding shall correspond with tag. All boxes shall be bolt down.

NOT TO SCALE

Approved by:		
City of Lathrop City Engineer		
No	Revised	Date

CITY OF LATHROP
DEPARTMENT OF PUBLIC WORKS

**DRIP IRRIGATION CONTROL
VALVE ASSEMBLY**

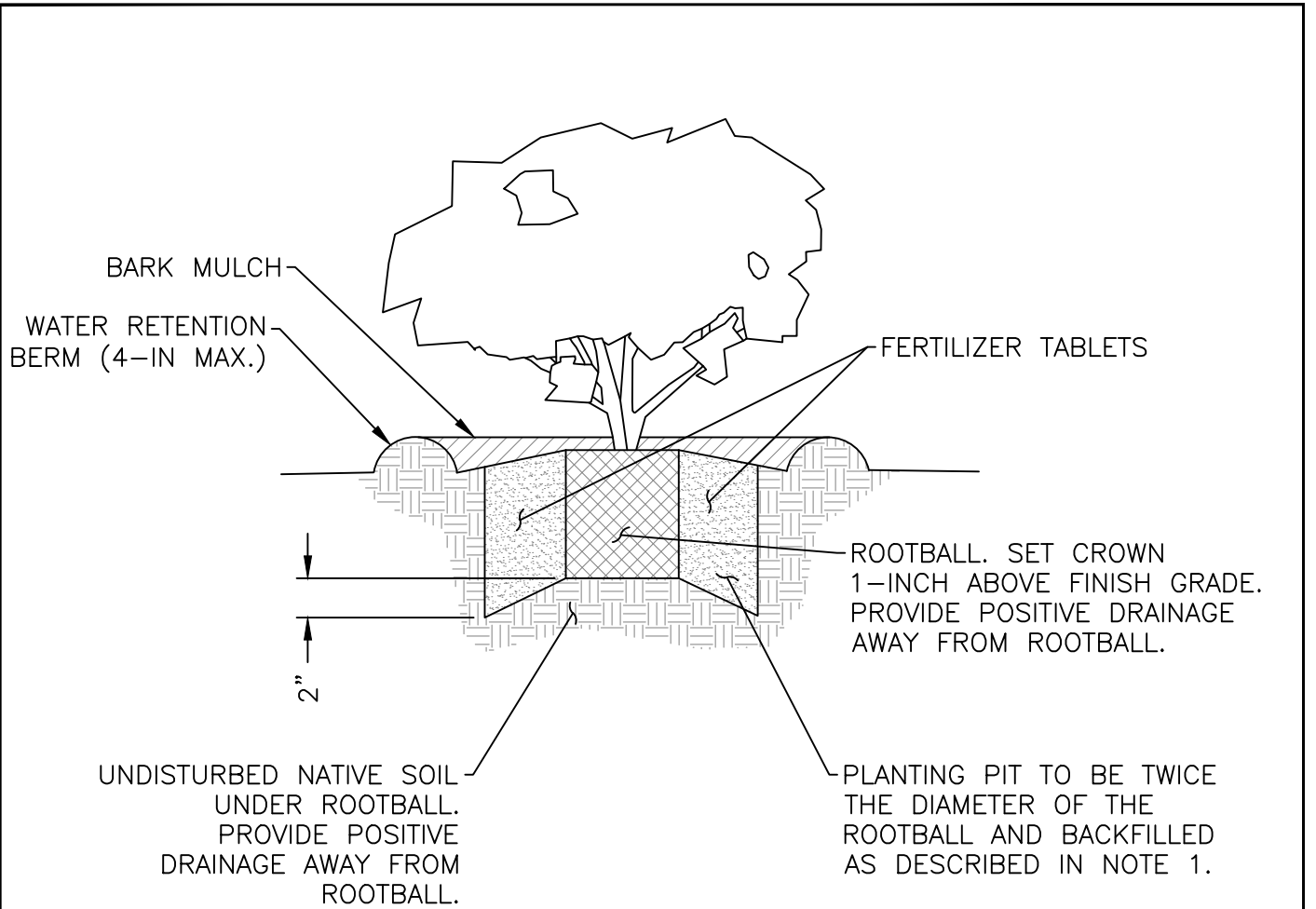


**STANDARD
DETAIL**

Date: **JULY 2024**

Drawing No:

L-28



NOTE

1. Organic backfill amendment to be nitrogen stabilized fir or redwood bark. install backfill in 6-inch lifts, water to settle.

1 GAL.	2 TABLETS
2 OR 5 GAL.	3 TABLETS
15 GAL.	6 TABLETS
24-IN. BOX OR LARGER	10 TABLETS

FERTILIZER

NOT TO SCALE

Approved by:		
City of Lathrop City Engineer		
No	Revised	Date

CITY OF LATHROP
DEPARTMENT OF PUBLIC WORKS
SHRUB PLANTING



**STANDARD
DETAIL**

Date: **JULY 2024**

Drawing No:

L-29

GROUND COVER – TRIANGULAR SPACE PER O.C., SPACING SHOWN ON PLANTING LEGEND, PLANTLETS TO BE SET WITH THEIR ROOTS IN AMENDED SOIL

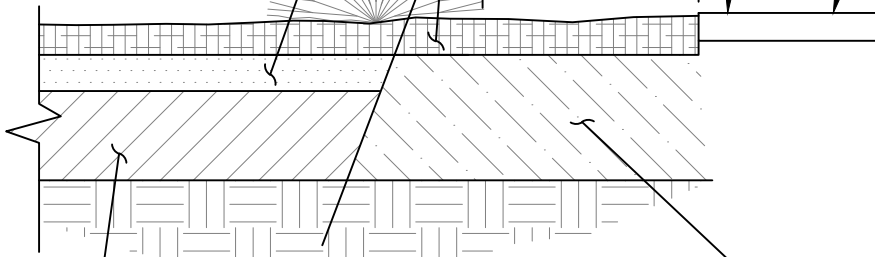
THE NEED TO PREVENT OVERGROWTH ON SIDEWALKS OR CURBS, ALL GROUND COVER MUST BE PLANTED AWAY FROM SIDEWALKS AND CURBS WITH THE EXPECTATION OF FULL GROWTH.

3" ORGANIC AMENDMENT (SEE NOTE 1)

3" BARK MULCH

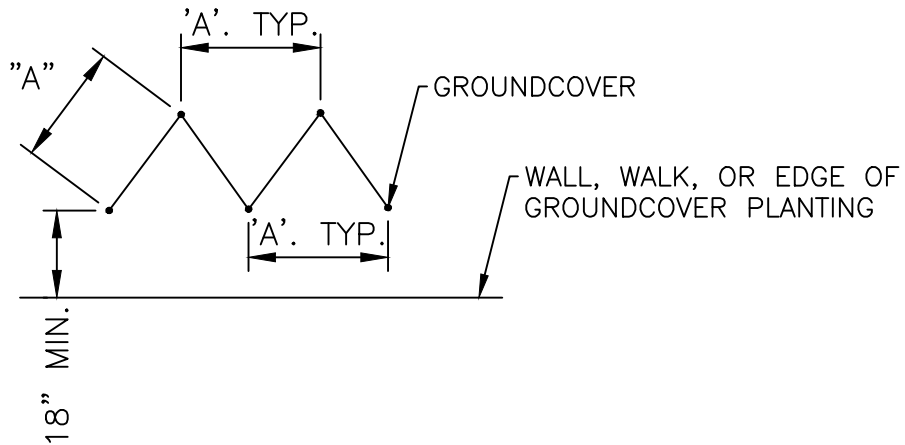
18"

SIDEWALK OR CURB



ROTOTILL ORGANIC AMENDMENT INTO SOIL

CLEAN NATIVE SOIL, FREE OF ROCKS AND DEBRIS



NOTE

1. Organic amendments shall be nitrogen
2. Stabilized fir or redwood bark to be used
3. Planting dimension 'A', per plant type. Show spacing on planting legend.

NOT TO SCALE

Approved by:		
City of Lathrop City Engineer		
No	Revised	Date

CITY OF LATHROP
DEPARTMENT OF PUBLIC WORKS
GROUND COVER
PLANTING AND SPACING



STANDARD
DETAIL

Date: **JULY 2024**

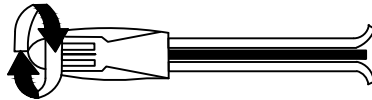
Drawing No:

L-30

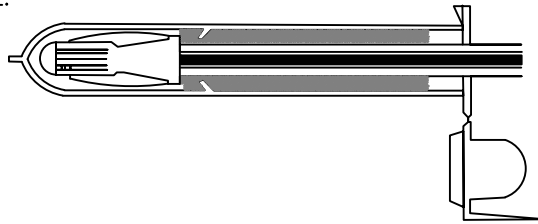
STEP 1: STRIP WIRES ½" FROM ENDS.



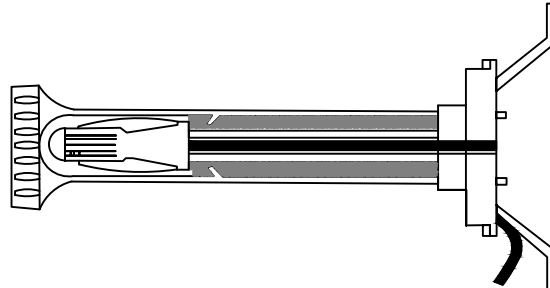
STEP 2: APPLY SCOTCHLOCK OR APPROVED EQUALLY SPRING CONNECTOR IN A CLOCKWISE DIRECTION.



STEP 3: INSERT SPLICE TO BOTTOM OF GEL-FILLED TUBE. CHECK TO MAKE SURE CONNECTOR HAS BEEN PUSHED PAST LOCKING FINGERS AND IS SEATED AT BOTTOM OF TUBE.



STEP 4: POSITION WIRES IN WIRE CHANNELS AND CLOSE INSULATOR TUBE COVER.



2 WIRE SYSTEMS MUST USE 3M™ SCOTCHCAST™ CONNECTOR SEALING PACKS

NOT TO SCALE

Approved by:		
City of Lathrop City Engineer		
No	Revised	Date

CITY OF LATHROP
DEPARTMENT OF PUBLIC WORKS

**3M-DBY WIRE CONNECTION
FOR NON-2 WIRE SYSTEMS**

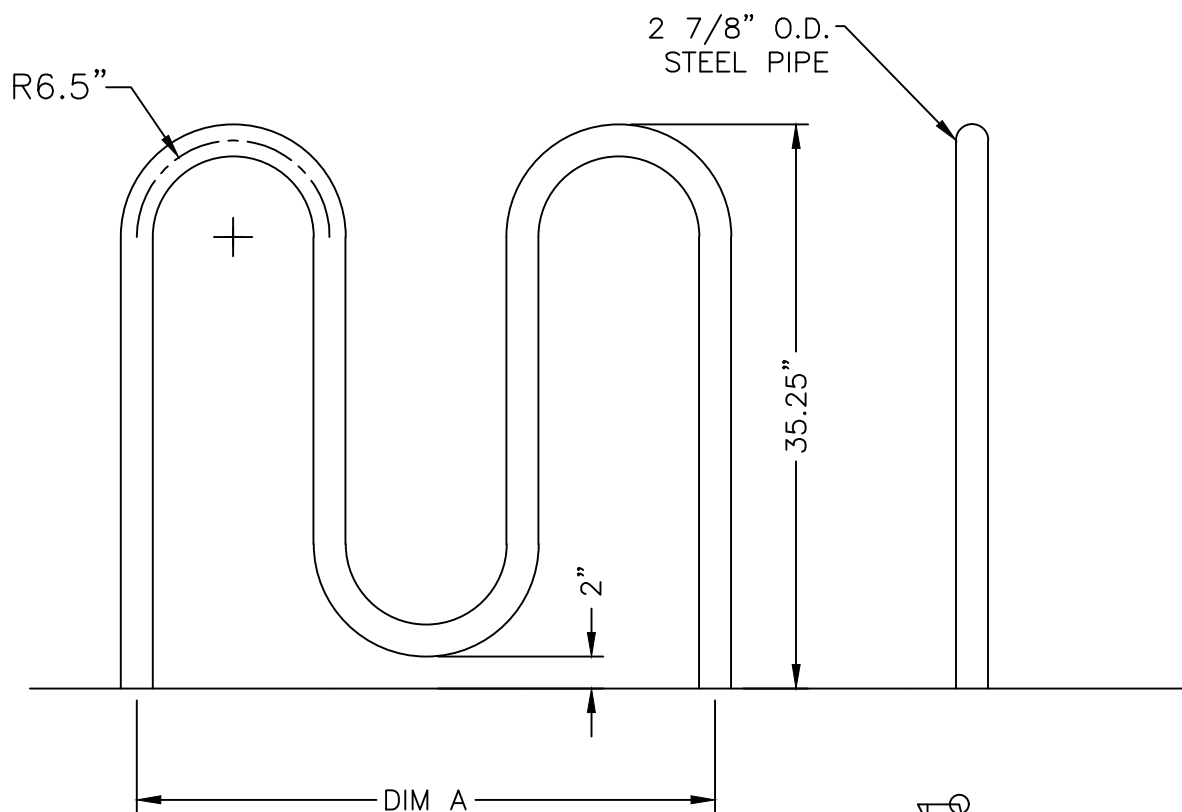


**STANDARD
DETAIL**

Date: **JULY 2024**

Drawing No:

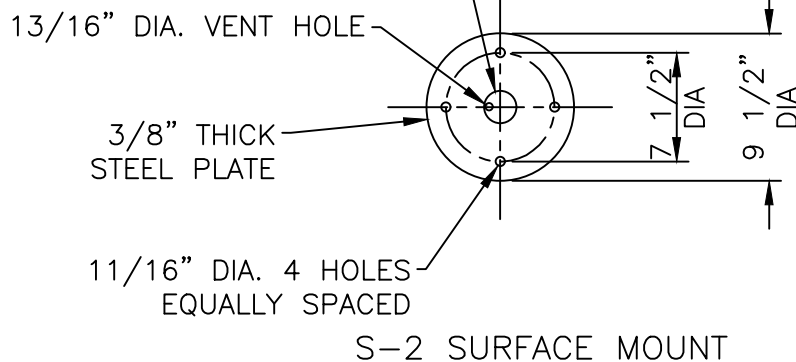
L-31



MODEL NO.	PEAKS	DIM "A"
125-20	2	37 1/2" LG
125-30	3	62 1/2" LG
125-40	4	87 1/2" LG
125-50	25	112 1/2" LG

FINISH OPTIONS:

- RAL 6012 POWDER COATING



NOTES:

1. 1/2-in x 3 3/4-in plated expansion anchor bolts provided for option S-2.
2. finish material is stainless steel.
3. Single inverted "U" rack may be used in appropriate situations.
4. Materials can be obtained through Dumor Inc. P.O. Box 142, Mifflintown, PA. 17059-0142, 125 series or approved equal.
5. An alternate source and options is bikeparking.com tel. (888) 764-2453, Palmer Group LLC. 1728 Ocean Ave, #132, San Francisco, CA. 94112.

NOT TO SCALE

Approved by:		
City of Lathrop City Engineer		
No	Revised	Date

CITY OF LATHROP
DEPARTMENT OF PUBLIC WORKS
STANDARD BIKE RACK



**STANDARD
DETAIL**

Date: **JULY 2024**

Drawing No:

L-32

DOGIPOT PET STATION (ITEM #1003-L) (ITEM #1003BLK-L)

- (A) DOGIPOT PET SIGN
 - H: 18" X W: 11.5"
 - 14 gauge reflective aluminum
 - Weight: 1.35 lbs
 - Forest green on white
- (B) ALUMINUM DOGIPOT JUNIOR BAG DISPENSER
 - H: 15.5" X W: 9.4" X D: 3.25"
 - 12 gauge powder coated forest green aluminum
 - Weight: 7 lbs
 - 400 bag capacity
 - Two diamond shaped bag dispenser slots
 - Front locking access panel
 - Clearly posted instructions
- (C) STEEL TRASH RECEPTACLE WITH LID
 - H: 23" X 11.5" diameter
 - 16 gauge powder coated forest green steel
 - Weight: 14.6 lbs
 - 10 gallon capacity with interior trash line bag retainer bands
 - Attached stainless steel hinged lid
 - One (1) box 50 count DOGIPOT Smart Liner Trash Bags (ITEM #1404) included (5lbs)
- (D) TELESCOPIC GALVANIZED STEEL MOUNTING POST
 - 2"X2"8'
 - 11 guage galvanized steel
 - Weight: 15 lbs

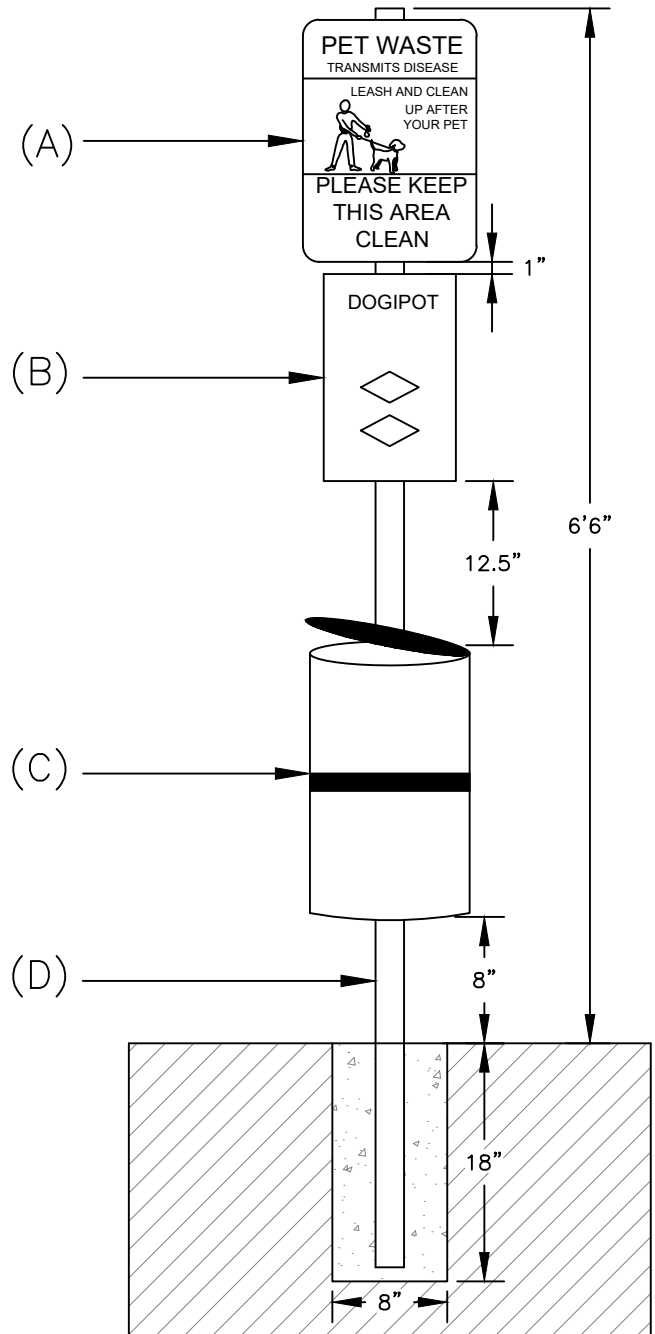
TOTAL HEIGHT FROM ABOVE GROUND:
 •6'6"

SPACE BETWEEN DISPENSER AND SIGN:
 •1"

SPACE BETWEEN RESCEPTACLE AND DISPENSER:
 •12.5"

SPACE BETWEEN GROND AND RESCEPTACLE:
 •8"

HOLE:
 •D: 18.0"X W: 8.0"
 •FILL with 40 lbs "ready to use" cement



NOT TO SCALE

Approved by:		
City of Lathrop City Engineer		
No	Revised	Date

CITY OF LATHROP
 DEPARTMENT OF PUBLIC WORKS

DOGIPOT PET STATION



**STANDARD
 DETAIL**

Date: **JULY 2024**

Drawing No:

L-33