

**City Proper**

- LD, Low Density Residential (1-7 du/A)
- MD, Medium Density Residential (8-15 du/A)
- HD, High Density Residential (16-25 du/A)
- NC, Neighborhood Commercial
- VC, Village Center
- CC, Community Commercial
- SC, Service Commercial
- FC, Freeway Commercial
- LI, Limited Industrial
- GI, General Industrial
- P/QP, Public/Quasi-Public
- P, Park
- OS, Open Space

**Central Lathrop**

- VR-CL, Variable Density Residential (3-16 du/A)
- HR-CL, High Density Residential (15-49 du/A)
- R/MU-CL, Residential Mixed Use (10-40 du/A)
- OC-CL, Office Commercial
- NC-CL, Neighborhood Commercial
- LI-CL, Limited Industrial
- P/QP-CL, Public/Quasi-Public
- P-CL, Park
- OS-CL, Open Space

**Lathrop Gateway**

- CO-LG, Commercial Office
- SC-LG, Service Commercial
- LI-LG, Limited Industrial

**South Lathrop Specific Plan**

- CO-SL, Commercial Office
- LI-SL, Limited Industrial
- P/QP-SL, Public/Quasi-Public
- OS-SL, Open Space River/Levee Park

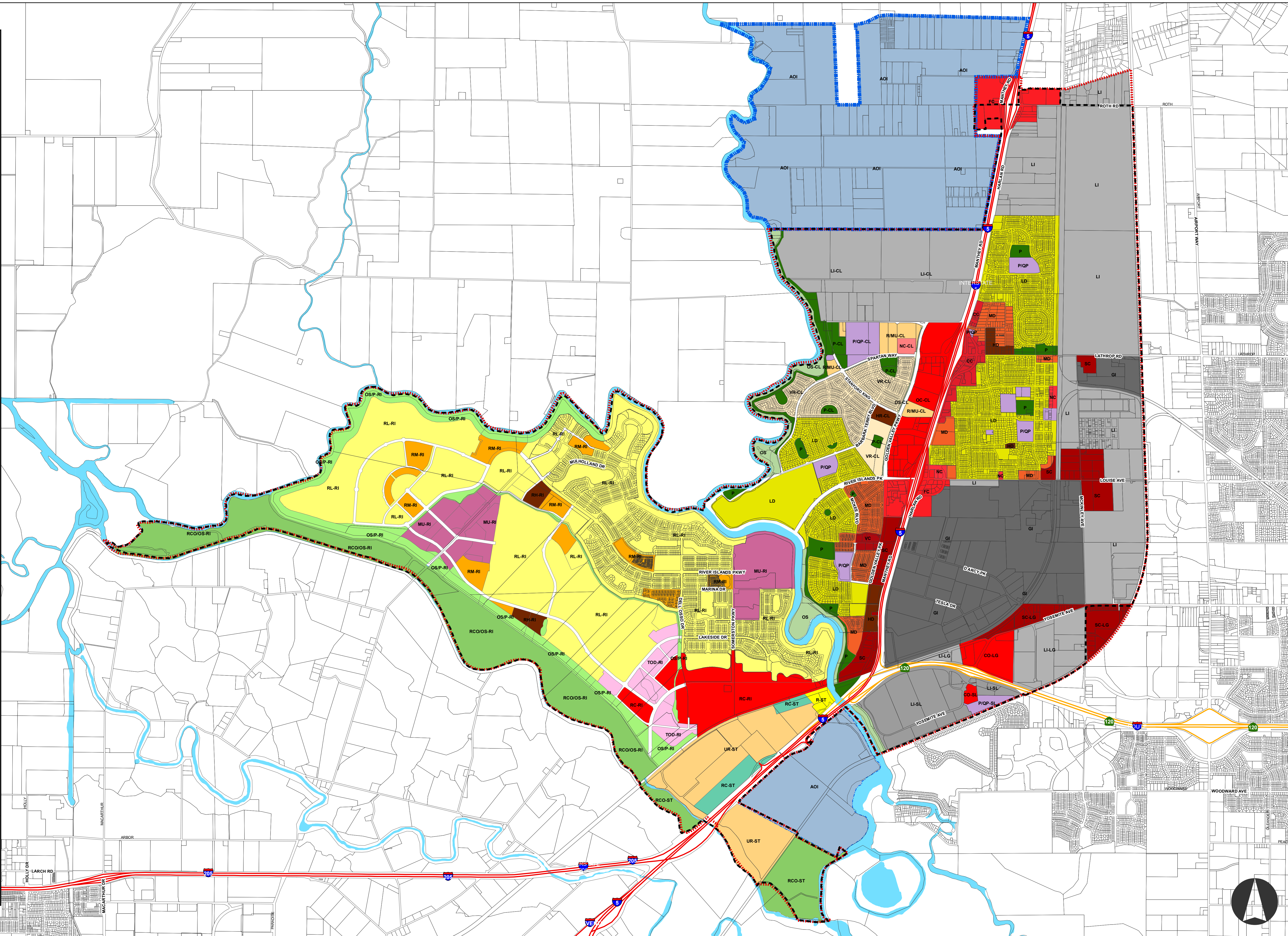
**River Islands**

- RL-RI, Residential Low (3-9 du/A)
- RM-RI, Residential Medium (6-20 du/A)
- RH-RI, Residential High (15-40 du/A)
- RC-RI, Regional Commercial
- TOD-RI, Transit Oriented Development
- MU-RI, Mixed Use Town Center
- RCO/OS-RI, Resource Conservation/Open Space
- OS/P-RI, Open Space/Public Use

**Stewart Tract**

- R-ST, Residential (1-7 du/A)
- RC-ST, Recreation Commercial
- RCO-ST, Resource Conservation
- UR-ST, Urban Reserve

Sphere of Influence  
 City Limits  
 Area of Interest  
 Parcels



Adopted Date: July 8, 2024  
 Document Path: \\chfcls01\share\GIS\Armando\CDD\General\_Plan\2024\_09\_23\_General\_Plan.mxd

# General Plan Map

## City of Lathrop

Disclaimer: Data shown may not be accurate and is for mapping purposes only. Contact the City for more information.

