

SURFACE WATER DISCHARGE PROJECT



City Council Regular Meeting
June 10, 2024 - Item 2.4



BACKGROUND



Wastewater from the City of Lathrop is treated at two separate facilities:

1. City of Lathrop's Consolidated Treatment Facility (CTF)
2. City of Manteca's Water Quality Control Facility

Treated wastewater from the Manteca WQCF is primarily discharged to the San Joaquin River.

Treated wastewater from the Lathrop CTF was previously discharged to land via ponds and spray fields.

- Inefficient and costly to operate
- Significant long term maintenance costs
- Large foot print, estimated build out would require 1,500 acres valued near \$200 Million

Historically wastewater treatment and disposal has been expensive and a barrier for development.



PROJECT DESCRIPTION


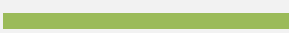


The Surface Water Discharge Project is one of the most significant utility projects undertaken by the City to date. The Project established a direct discharge of highly treated recycled water from the CTF to the San Joaquin River.



River Outfall Structure

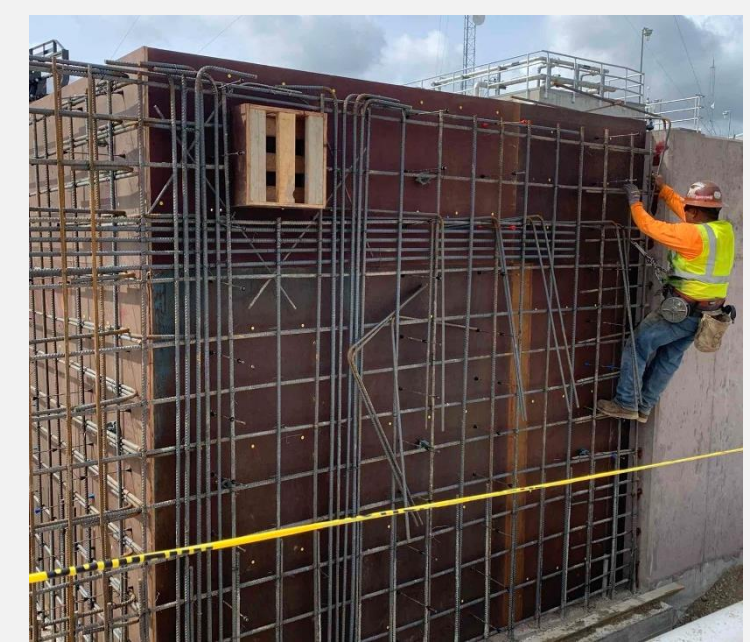
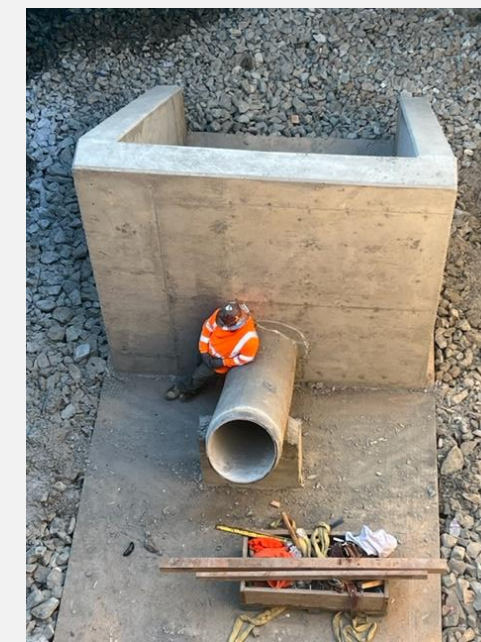
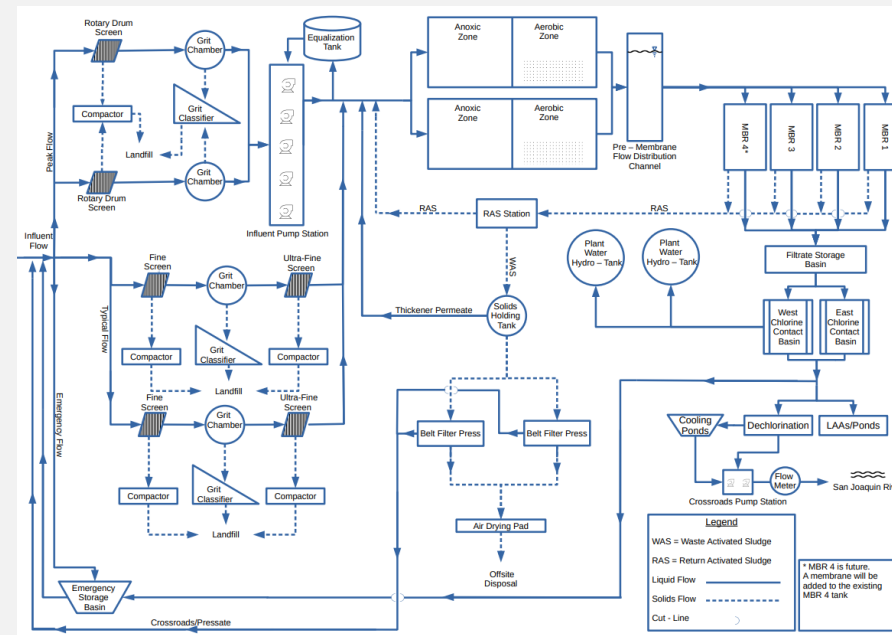
Pipeline

- Repurposed 
- New 

CTF Modifications

- Dechlorination Facility
- Cooling Ponds
- Pump Station

TIMELINE



Project Starts Apr 2017

Lathrop staff initiated discussions with the Central Valley Regional Water Quality Control Board (Central Valley Water Board)

Regionalization, Reclamation, Recycling Report (2019)

Environmental Oct 2020

Environmental Impact Report (EIR)

- 800 pages
- 2 Years to complete
- Public engagement

City Council approved Final EIR (March 2021)

Engineering Jan 2021

14 consultants from various disciplines

Evaluation of alternative designs and repurposing of existing infrastructure

Permitting Feb 2022

Central Valley Water Board approved Lathrop's National Pollutant Discharge Elimination System (NPDES) Permit

11 permitting agencies in total (Local, State & Federal)

Construction 2022-2023

- CTF modifications
- 1.5 miles of pipeline
- Railroad crossing
- Freeway crossing
- Levee and River work

Council accepts improvements (June 2023)



THE TEAM

Public Agencies

Central Valley Water Board

- Patrick Pulupa

City of Lathrop Staff

- Engineering
- Construction
- Utility Operations
- ISD

Development

River Islands Development
Saybrook (Central Lathrop)
Richland Communities



Consultants

RBI
PACE
Ascent
KPFF
Buchalter
TRC
EKI
MBK
KSN
Pacific Pipeline
Monk & Associates
Woodard & Curran
Engeo
Primex
FGL

Contractors

Teichert

- Pipeline
- River Outfall Structure

Cushman

- CTF Modifications



PROJECT BENEFITS



Ratepayers

Sewer rates are directly tied to the cost of operating and maintaining the sewer system.

The Project allows for a more efficient operation, avoids long term maintenance costs.

Additional development will reduce long term sewer costs through economies of scale.



Land Use

Cost to purchase wastewater treatment is more affordable.

Land tied up as ponds and application sites will be converted into developed area.



City Buildout

Provide for planned City buildout and development based on the City's General Plan.

Without the project, land slated for development would have been tied up as ponds and land application sites.

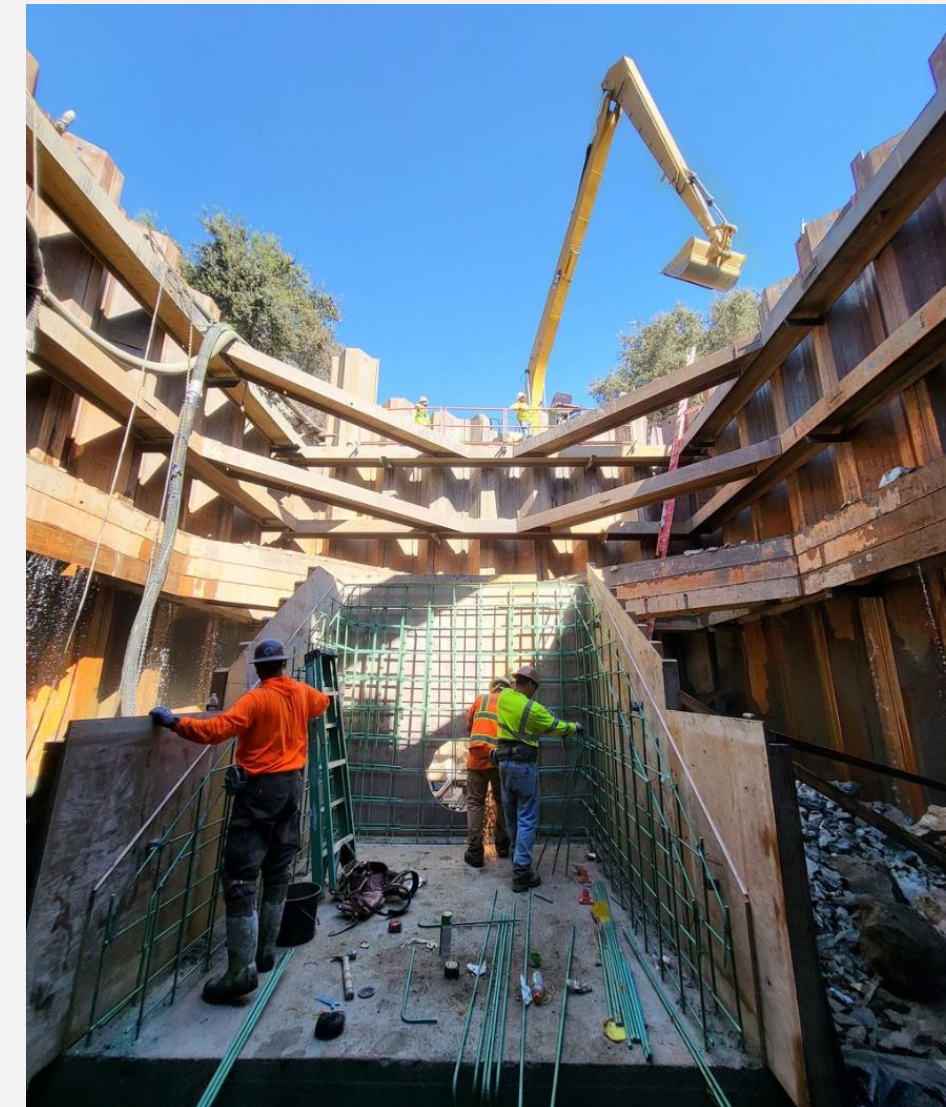


Environmental

Maximize use of recycled water in the City presently and in the future.

During the warmer summer months, recycled water is used in parks and streetscapes. During the cooler non irrigation season, recycled water is sent to the river.

RIVER OUTFALL PICTURES



CTF PICTURES

