

# CIP GG 22-35 CAMERA SURVEILLANCE FOR MAJOR CITY PARKS

CITY COUNCIL REGULAR MEETING

SEPTEMBER 12, 2022 | ITEM: 5.1



# BACKGROUND



IXII Group met with the City of Lathrop and Lathrop Police Department representatives related to Capital Improvement Project GG 22-35 Camera Surveillance Systems for Major City Parks

# BACKGROUND



Three Major City Parks were identified as Phase I of this CIP by City staff. They were:

- **APOLINAR SANGALANG PARK**

- 13470 Slate Street

- **MANUEL VALVERDE PARK**

- 15557 5<sup>th</sup> Street

- **WOODFIELD PARK**

- 801 Lathrop Road

# RESEARCH



A site visit was conducted along with City staff at the three parks to identify:

- Current camera connectivity infrastructure in place
- Park priorities focused on vandalism prevention and investigation, and public safety
- Appropriate location and equipment recommendations to achieve the most effective results

# INITIAL OVERALL FINDINGS

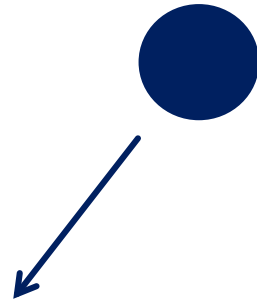


The City of Lathrop has a combination of existing fiber infrastructure and existing fiber ready infrastructure, and areas wireless connections would be most feasible for optimal equipment placement and connectivity.

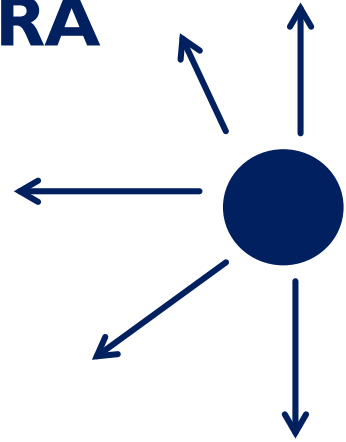
# EQUIPMENT TYPES



## PAN-TILT-ZOOM (PTZ) CAMERA



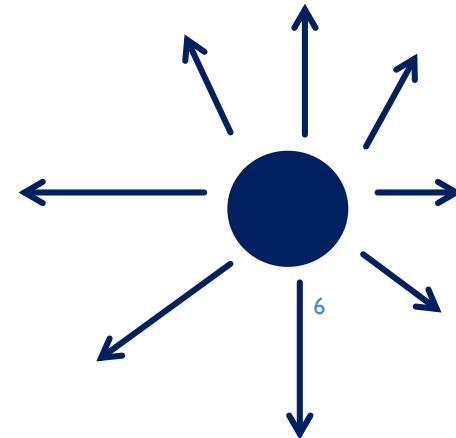
## 270° PASSIVE CAMERA



## AUTOMATED LICENSE PLATE READER CAMERA (LQ6)



## 360° PASSIVE CAMERA



# APOLINAR SANGALANG PARK



Factors in determining optimal video equipment and placement included:

- Play structure observation for public safety and vandalism prevention and investigation
- North side restroom building exterior observation for public safety and vandalism prevention and investigation
- Baseball diamond area observation for public safety
- Southeast restroom building exterior observation for public safety and vandalism prevention and investigation
- Tennis and basketball court area observation for public safety

# APOLINAR SANGALANG PARK





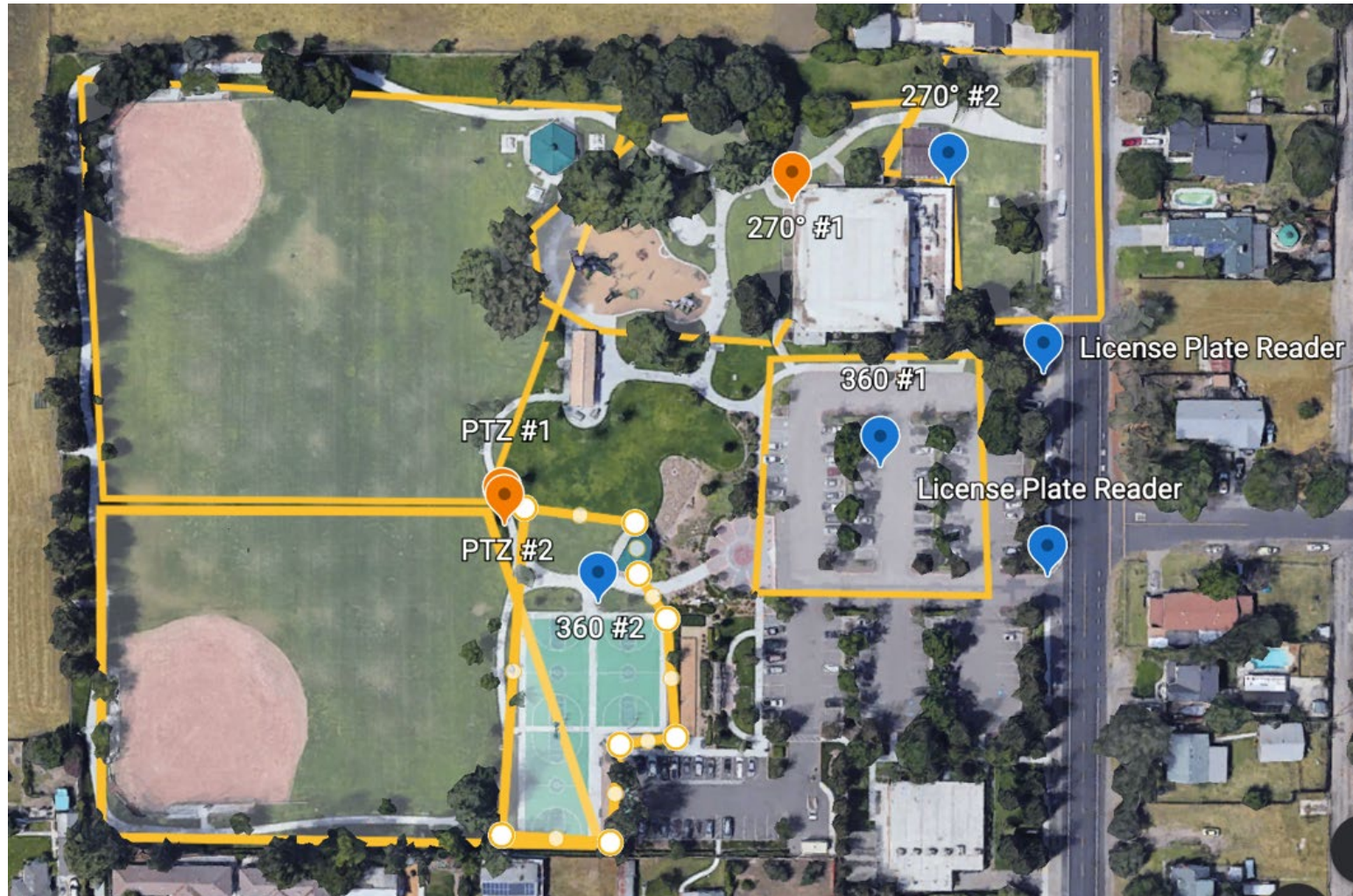
# MANUEL VALVERDE PARK



Factors in determining optimal video equipment and placement included:

- Community center building north side observation for public safety and vandalism prevention and investigation
- Play structure observation for public safety and vandalism prevention and investigation
- Baseball diamond area observation for public safety
- Restroom building exterior observation for public safety and vandalism prevention and investigation
- Basketball court area observation for public safety
- Parking lot observation for public safety

# MANUEL VALVERDE PARK



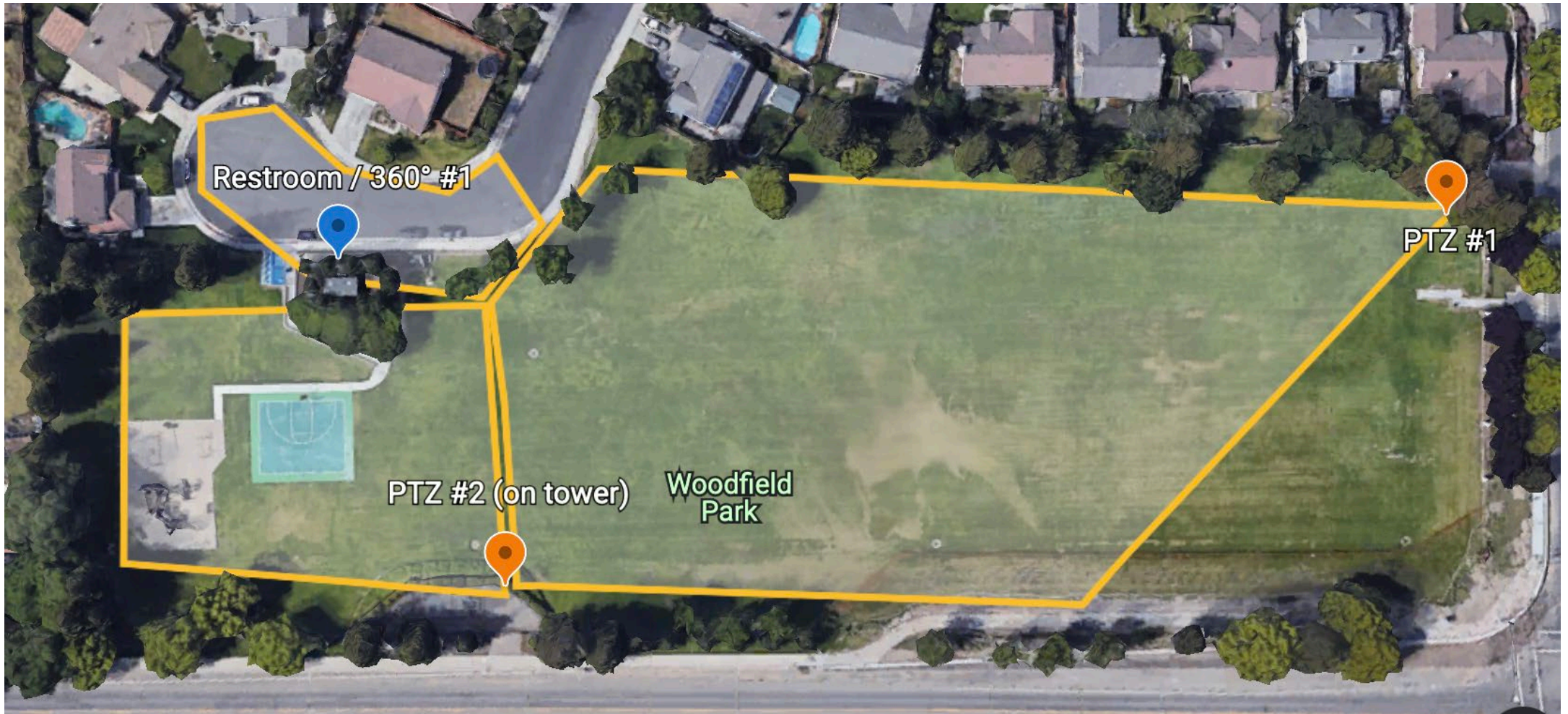
# WOODFIELD PARK



Factors in determining optimal video equipment and placement included:

- Play structure observation for public safety and vandalism prevention and investigation
- Restroom building exterior observation for public safety and vandalism prevention and investigation (while still in existence)
- Basketball court area observation for public safety
- Parking lot observation for public safety

# WOODFIELD PARK



# EQUIPMENT & INSTALLATION RECOMMENDATIONS



## APOLINAR SANGALANG PARK

- 270° Avigilon H4 Multisensor camera (quantity 3)
  - \$36,000 cost for cameras and hardware, licensing, installation, and configuration
  - \$1,000 estimated communications cost, including wiring (quantity 2)
  - \$4,000 estimated communications cost, wireless (quantity 1)
- Avigilon H5A PTZ (quantity 2)
  - \$24,000 cost for cameras and hardware, licensing, installation, and configuration
  - \$1,000 estimated communications cost, including wiring

**TOTAL ESTIMATED COST: \$66,000**

# EQUIPMENT & INSTALLATION RECOMMENDATIONS



## MANUEL VALVERDE PARK (page 1 of 2)

- 270° Avigilon H4 Multisensor camera (quantity 2)
  - \$24,000 cost for cameras and hardware, licensing, installation, and configuration
  - No cost for communications as City will run conduit and Cat6 wiring
- 360° Avigilon H4 Multisensor camera (quantity 2)
  - \$24,000 cost for cameras and hardware, licensing, installation, and configuration
  - \$4,000 estimated communications cost, including wiring (quantity 1)
  - \$3,500 estimated communications cost, including wiring
  - \$7,500 estimated cost for new light pole (quantity 1)
  - \$5,000 estimated cost for electrical upgrade/installation (quantity 1)

# EQUIPMENT & INSTALLATION RECOMMENDATIONS



## MANUEL VALVERDE PARK (page 2 of 2)

- Avigilon H5A PTZ (quantity 2)
  - \$24,000 cost for cameras and hardware, licensing, installation, and configuration
  - \$3,500 estimated communications cost, including wiring
  - \$7,500 estimated cost for new light pole (quantity 1)
  - \$5,000 estimated cost for electrical upgrade/installation (quantity 1)
- Vigilant L6Q LPR (quantity 2)
  - \$4,500 annual cost

**TOTAL ESTIMATED COST: \$112,500**

# EQUIPMENT & INSTALLATION RECOMMENDATIONS



## WOODFIELD PARK

- 270° Avigilon H4 Multisensor camera (quantity 1)
  - \$12,000 cost for cameras and hardware, licensing, installation, and configuration
  - \$4,000 estimated communications cost, including wiring
  - \$5,000 estimated cost for electrical upgrade/installation
- Avigilon H5A PTZ (quantity 2)
  - \$24,000 cost for cameras and hardware, licensing, installation, and configuration
  - \$1,000 estimated communications cost, including wiring

**TOTAL ESTIMATED COST: \$46,000**



# TOTAL ESTIMATED PROJECT COST



A total estimated project cost is

**\$249,000**

which includes a 10% contingency estimation of

**\$24,500**

# REAL-TIME MONITORING



Real-time monitoring of the cameras within the network, specifically PTZ cameras, is recommended. Monitoring these installed assets in real time enhances the response to public safety calls by providing additional real-time updates to responding resources, which increases the safety of the responders and the community nearby.

# REAL-TIME MONITORING



It is recommended that Lathrop Police Department perform some trial periods with various personnel such as Detectives or Records staff, to monitor live video cameras and still shot License Plate Reader notifications. This can be completed as an ancillary task to their normal assignment and can be a force multiplier when responding to calls for service.

# STAFF RECOMMENDATIONS



- Staff recommends that Council approve the surveillance systems for the initial 3 parks for CIP GG 22-35 Camera Surveillance for Major Parks and approve the contract with IXII Group, Inc.