

City of



Lathrop

**PARKS, RECREATION, &
MAINTENANCE SERVICES**

WE C.A.R.E.



July
is



PARKS & RECREATION MONTH



GO
OUTSIDE
& PLAY



ECONOMIC IMPACT OF PARKS

In a recent study and report by the National Recreation and Park Association, it was found that local public park and recreation agencies in the United States generated nearly \$218 billion in economic activity.

The report included a state-level analysis that highlights the economic impact of local parks in all 50 states and the District of Columbia.

California ranked #1 with the highest economic impact with \$23.6 billion.

When combined with the ability to deliver happier and healthier communities, parks and recreation transforms our cities, towns and counties into vibrant and prosperous communities for all.



COOLING ZONE

The City of Lathrop will activate a Cooling Zone when:

- Temperature is forecasted to be 103 or above for more than three consecutive days, or
- Temperature is forecasted to be 105 or above on an individual day.

The Cooling Zone will be hosted at the Lathrop Police Department Community Room located at 940 River Island Parkway.



The Cooling Zone will operate from 12:00p.m.-7:00p.m.

Please Note: The Cooling Zone will close if no one has arrived by 6:00p.m.

SUMMER LUNCH PROGRAM

Manteca Unified School District Free Summer Meals

Monday-Friday June 1st thru July 22nd
(No meal service on July 4th)

Lathrop Locations:

- 11:00a.m. - 11:30a.m. @ Mossdale Landing Park
- 11:45a.m. - 12:15p.m. @ Leland & Jane Stanford Park
- 12:30p.m. – 1:00p.m. @ Valverde Park

For children 2-18 years old.

Food must be eaten on premises.



FREE SUMMER MEALS!

For children 2-18 years, provided by Manteca Unified School District

KIDS MUST EAT MEAL ON PREMISES

Monday - Friday, June 1st, 2022 - July 22nd, 2022

← No Meal Service Monday, July 4th, 2022 →

| | | | | | |
|---|---|---|---|--|---|
| <p>Manteca 11:00-11:30 Diamond Oaks Park - 1179 Pestana Ave. Lincoln Park - 245 S. Powers Ave. Woodward Park - 710 E. Woodward Ave. 11:45-12:15 Baccileri Park - 154 Stockton St. Sequoia Park - 868 Wawona St. Shasta Park - 995 E. Edison St. 12:30-1:00 B & C Giles Park - 545 W. Alameda St. Northgate Park - 1750 Hoyt Ln. Roberts Estates Park - 1740 Rail St.</p> | <p>Lathrop 11:00-11:30 Mossdale Landing Park - 700 Towne Centre Dr. 11:45-12:15 Stanford Park - 450 Spartan Way 12:30-1:00 Manuel Valverde Park - 15557 5th St.</p> <p>Stockton 11:00-11:30 Smith Park - 2606 William Moss Blvd. 11:45-12:15 Paul E. Weston Park - 3603 EWS Woods Blvd. 12:30-1:00 William Long Park - 4535 Woodchase Ln.</p> <p>Artessi Camp 2 & 3 (July 8th - July 22) 10:00-10:15 Artessi Camp 2 - 777 W. Mathews Rd. 10:20-10:35 Artessi Camp 3 - 333 W. Mathews Rd.</p> | <p>BBQ Schedule</p> <table border="0" style="width: 100%; font-size: x-small;"> <tr> <td style="vertical-align: top; width: 33%;"> <p>11:00-11:30 Diamond Oaks Park - 6/6, 7/1 Lincoln Park - 6/8, 6/29 Woodward Park - 6/7, 6/30, 7/19 Mossdale Landing Park - 6/9, 6/28, 7/20 Smith Park - 6/10, 6/27</p> </td> <td style="vertical-align: top; width: 33%;"> <p>11:45-12:15 Baccileri Park - 6/14, 7/6 Sequoia Park - 6/13, 7/7 Shasta Park - 6/17, 7/8 Stanford Park - 6/15, 7/5 Paul E. Weston Park - 6/16, 7/11</p> </td> <td style="vertical-align: top; width: 33%;"> <p>12:30-1:00 B & C Giles Park - 6/20, 7/14 Northgate Park - 6/23, 7/12 Roberts Estates Park - 6/24, 7/13 Manuel Valverde Park - 6/21, 7/15 William Long Park - 6/22, 7/18</p> </td> </tr> </table> | <p>11:00-11:30 Diamond Oaks Park - 6/6, 7/1 Lincoln Park - 6/8, 6/29 Woodward Park - 6/7, 6/30, 7/19 Mossdale Landing Park - 6/9, 6/28, 7/20 Smith Park - 6/10, 6/27</p> | <p>11:45-12:15 Baccileri Park - 6/14, 7/6 Sequoia Park - 6/13, 7/7 Shasta Park - 6/17, 7/8 Stanford Park - 6/15, 7/5 Paul E. Weston Park - 6/16, 7/11</p> | <p>12:30-1:00 B & C Giles Park - 6/20, 7/14 Northgate Park - 6/23, 7/12 Roberts Estates Park - 6/24, 7/13 Manuel Valverde Park - 6/21, 7/15 William Long Park - 6/22, 7/18</p> |
| <p>11:00-11:30 Diamond Oaks Park - 6/6, 7/1 Lincoln Park - 6/8, 6/29 Woodward Park - 6/7, 6/30, 7/19 Mossdale Landing Park - 6/9, 6/28, 7/20 Smith Park - 6/10, 6/27</p> | <p>11:45-12:15 Baccileri Park - 6/14, 7/6 Sequoia Park - 6/13, 7/7 Shasta Park - 6/17, 7/8 Stanford Park - 6/15, 7/5 Paul E. Weston Park - 6/16, 7/11</p> | <p>12:30-1:00 B & C Giles Park - 6/20, 7/14 Northgate Park - 6/23, 7/12 Roberts Estates Park - 6/24, 7/13 Manuel Valverde Park - 6/21, 7/15 William Long Park - 6/22, 7/18</p> | | | |



This institution is an equal opportunity provider. Somos un proveedor de igualdad de oportunidades.
Hunger Hotline: 1-866-SHUNGRY (English) or 1-877-SHAMBRE (Spanish)
Find Summer Meal locations in California at: <http://www.cde.ca.gov/ed/els/sum/summermeals.asp> or text FOOD to 914-342-7744

COMIDAS DE VERANO GRATIS

Para niños entre los 2-18 años,
proporcionado por el Distrito Escolar Unificado de Manteca

LOS NIÑOS DEBEN COMER EN EL LOCAL

Lunes - Viernes, 1ro de Junio 2022 - 22 de Julio 2022

← No habrá servicios de comidas el 4 de Julio 2022 →

| | | | | | |
|---|--|---|---|--|---|
| <p>Manteca 11:00-11:30 Parque Diamond Oaks - 1179 Pestana Ave. Parque Lincoln - 245 S. Powers Ave. Parque Woodward - 710 E. Woodward Ave. 11:45-12:15 Parque Baccileri - 154 Stockton St. Parque Sequoia - 868 Wawona St. Parque Shasta - 995 E. Edison St. 12:30-1:00 Parque B & C Giles - 545 W. Alameda St. Parque Northgate - 1750 Hoyt Ln. Parque Roberts Estates - 1740 Rail St.</p> | <p>Lathrop 11:00-11:30 Parque Mossdale Landing - 700 Towne Centre Dr. 11:45-12:15 Parque Stanford - 450 Spartan Way 12:30-1:00 Parque Manuel Valverde - 15557 5th St.</p> <p>Stockton 11:00-11:30 Parque Smith - 2606 William Moss Blvd. 11:45-12:15 Parque Paul E. Weston - 3603 EWS Woods Blvd. 12:30-1:00 Parque William Long - 4535 Woodchase Ln.</p> <p>Campamento Artessi 2 & 3 (8 de Julio - 22 Julio) 10:00-10:15 Campamento Artessi 2 - 777 W. Mathews Rd. 10:20-10:35 Campamento Artessi 3 - 333 W. Mathews Rd.</p> | <p>Horario de BBQ (Parrilladas)</p> <table border="0" style="width: 100%; font-size: x-small;"> <tr> <td style="vertical-align: top; width: 33%;"> <p>11:00-11:30 Parque Diamond Oaks - 6/6, 7/1 Parque Lincoln - 6/8, 6/29 Parque Woodward - 6/7, 6/30, 7/19 Parque Mossdale Landing - 6/9, 6/28, 7/20 Parque Smith - 6/10, 6/27</p> </td> <td style="vertical-align: top; width: 33%;"> <p>11:45-12:15 Parque Baccileri - 6/14, 7/6 Parque Sequoia - 6/13, 7/7 Parque Shasta - 6/17, 7/8 Parque Stanford - 6/15, 7/5 Parque Paul E. Weston - 6/16, 7/11</p> </td> <td style="vertical-align: top; width: 33%;"> <p>12:30-1:00 Parque B & C Giles - 6/20, 7/14 Parque Northgate - 6/23, 7/12 Parque Roberts Estates - 6/24, 7/13 Parque Manuel Valverde - 6/21, 7/15 Parque William Long - 6/22, 7/18</p> </td> </tr> </table> | <p>11:00-11:30 Parque Diamond Oaks - 6/6, 7/1 Parque Lincoln - 6/8, 6/29 Parque Woodward - 6/7, 6/30, 7/19 Parque Mossdale Landing - 6/9, 6/28, 7/20 Parque Smith - 6/10, 6/27</p> | <p>11:45-12:15 Parque Baccileri - 6/14, 7/6 Parque Sequoia - 6/13, 7/7 Parque Shasta - 6/17, 7/8 Parque Stanford - 6/15, 7/5 Parque Paul E. Weston - 6/16, 7/11</p> | <p>12:30-1:00 Parque B & C Giles - 6/20, 7/14 Parque Northgate - 6/23, 7/12 Parque Roberts Estates - 6/24, 7/13 Parque Manuel Valverde - 6/21, 7/15 Parque William Long - 6/22, 7/18</p> |
| <p>11:00-11:30 Parque Diamond Oaks - 6/6, 7/1 Parque Lincoln - 6/8, 6/29 Parque Woodward - 6/7, 6/30, 7/19 Parque Mossdale Landing - 6/9, 6/28, 7/20 Parque Smith - 6/10, 6/27</p> | <p>11:45-12:15 Parque Baccileri - 6/14, 7/6 Parque Sequoia - 6/13, 7/7 Parque Shasta - 6/17, 7/8 Parque Stanford - 6/15, 7/5 Parque Paul E. Weston - 6/16, 7/11</p> | <p>12:30-1:00 Parque B & C Giles - 6/20, 7/14 Parque Northgate - 6/23, 7/12 Parque Roberts Estates - 6/24, 7/13 Parque Manuel Valverde - 6/21, 7/15 Parque William Long - 6/22, 7/18</p> | | | |



This institution is an equal opportunity provider. Esta institución es un proveedor de igualdad de oportunidades.
Hunger Hotline: 1-866-SHUNGRY (English) or 1-877-SHAMBRE (Spanish)
Find Summer Meal locations in California at: <http://www.cde.ca.gov/ed/els/sum/summermeals.asp> or text FOOD to 914-342-7744

Very Proud of our Team!



RECENT SPECIAL EVENTS



Community Garage Sale

May 14th @ Valverde Park
 23 Vendors



Memorial Day Ceremony

A special thank you to
 Keynote Speaker Dan
 Tovar and the Veterans
 Memorial Day Committee.
 May 30th @ Valverde Park



SOLD OUT

Father's Day Event

June 17th

Participants enjoyed games, a live DJ, raffle prizes, a delicious lunch and a special gift was given to all the men in attendance.



Movies in the Park

Friday Nights in June
 Generations Center
 Over 300+ in Attendance



POLICE DEPARTMENT OPENING & PINNING CEREMONIES



Pinning Ceremonies took place on May 17th and June 1st.

The *Ribbon Cutting Grand Opening Event* was held on June 25th with over 1000+ community members, staff and dignitaries in attendance.



LATHROP ANNIVERSARY CELEBRATION

Friday, July 1st
Generations Center
Over 8500+ in Attendance



City of Lathrop
PARKS, RECREATION, & MAINTENANCE SERVICES
WE CARE.

City of Lathrop Anniversary Celebration

Rides
Magician performance by Brian Cassidy
Kid's Stage
Live Band
Cover Me Badd
Food Trucks
Face Painting
Carnival Games
Vendors
Aerial Fireworks

**Friday
July 1st 6:00pm**
Generations Center
Fireworks at 9:15pm –
Radio broadcast on AM 89.1

www.ci.lathrop.ca.us/parksrec f i

in partnership with
Lathrop Sunrise Rotary



UPCOMING SPECIAL EVENTS

Registration Open!



FREE



Concerts in the Park

Friday Nights in July!
Starts at 6:30p.m.
Generations Center



FREE

Family Fun Night

Friday, August 12th
Starts 6:00p.m.
Mossdale Park



Comedy Under the Stars

Friday, Sept. 16th
Starts at 7:00p.m.
Adults 18+
Generations Center



Family Campout

August 20th-21st
Leland & Jane
Stanford Park

SENIORS

Food Programs

9AM-11AM @ Senior Center Parking Lot
Brown Bag: 2nd & 4th Tuesday of every month
Commodities: 3rd Thursday of every month

Guest Speaker

Family Resource &
Referral

June 22nd

Provided education on how the 211 program works along with other programs that San Joaquin County offers.



Lathrop
PARK RECREATION &
RECREATION SERVICES
MC CLAY

LATHROP SENIOR CENTER PRESENTS

TAI CHI

Tai Chi is a series of gentle physical exercises and stretches. Each posture flows into the next without pause, ensuring that your body is in constant motion. Tai Chi is connecting the mind and body and is known to:

- improve balance
- improve pain management
- enhance immune system
- improve chronic conditions

FOR AGES 50+

Tuesdays | 10:30am - 11:30am | Lathrop Senior Center
Mondays & Fridays | 9:30am - 11:00am | Lathrop Senior Center

REGISTER ONLINE OR IN PERSON

15707 FIFTH ST. WWW.CILATHROP.CA.US/PARKSPEC (916)941-7380

Tai Chi

Tuesdays @ 10:30am
Mondays & Fridays @ 9:30am



Lathrop
PARK RECREATION &
RECREATION SERVICES
MC CLAY

BOOK CLUB

3RD WEDNESDAY OF THE MONTH | 3:00 - 4:00PM

LATHROP SENIOR CENTER
15707 FIFTH STREET

FOR MORE INFORMATION
CALL (209)941-7380

Book Club

3rd Wednesday of Each Month
@ 3:00pm



TEENS

End of the Year Party! May 27th

- ✓ Food Trucks
- ✓ Obstacle Course
- ✓ Lawn Games
- ✓ Food
- ✓ DJ



the GRIND

Lathrop Parks and Recreation Department
TEEN LOUNGE AND SKATE PARK

Summer Hours

Monday-Saturday 3pm-5pm
Closed Sunday

the GRIND
Lathrop Parks and Recreation Department
TEEN LOUNGE AND SKATE PARK

Exclusively for middle schoolers entering 7th-9th grade in fall 2022.

**MUSIC
GAMES
PIZZA
PRIZES
FRIENDS**

Summer @ the grind

Join us weekly for staff led activities, lunch and fun!

Saturdays from 12:00pm-3:00pm
Grades 7th-9th
The Grind @ LGC 450 Spartan Way
\$25 each

Now Trending June 11

Fun in the Sun Games June 18

Beat the Heat June 25

Sci-fi July 9

Escape Room July 16

Movie & make your own ice-cream July 23

No program July 2

For more information or to register:

www.ci.lathrop.ca.us/parksrec (209) 941-7372



SPECIALTY CAMPS



City of **Lathrop**
PARKS, RECREATION, &
MAINTENANCE SERVICES
WE C.A.R.E.

Skyhawks

Summer Sports Camps

@ Stanford Park (450 Spartan Way)

JULY 5-8
4 day camp

SOCCER
Your young athlete will gain the technical skills and sports knowledge required for their next step into soccer. Areas of focus are dribbling, passing, shooting and ball control

FLAG FOOTBALL
Give your child the perfect introduction to America's favorite game with Skyhawks Flag Football, fueled by USA Football. Campers learn the fundamentals like passing, receiving, kicking and flag pulling in a fun and positive environment.

JULY 11-15

MULTI - SPORT
Multi Sport programs are designed to introduce young athletes to a variety of different sports in one setting. Athletes will learn the rules of each sport along with the lessons of sportsmanship and teamwork.

JULY 18-22

BASKETBALL
This fun, skill-intensive program is designed for beginning to intermediate players. Using our progressive curriculum, we focus on the whole player - teaching sportsmanship and teamwork. Boys and girls will learn the fundamentals of passing, shooting, ball handling, rebounding and defense through skills

JULY 25-29

AGES 7-12 YEARS
9:00am-12:00pm

To register visit www.ci.lathrop.ca.us/parksrec
(209) 941-7370



summer camp season

OUR FAVORITE TIME OF YEAR

search local sports camps



Skyhawks



Flag Football Camp
Multi-Sport Camp
Basketball Camp

SPORTS



City of Lathrop
PARKS, RECREATION, & MAINTENANCE SERVICES
WE C.A.R.E.

MINI MOVERS T-Ball 2022

TODDLERS AGES 3-5
JULY 23- AUGUST 20
SATURDAYS 10:00AM-10:50AM
VALVERDE PARK

\$80
Per Child
Includes
Shirt
and Glove

Parent/
Guardian
Participation
Required

This program focuses on skill development, fun, and confidence building. Participants will learn teamwork, sportsmanship, and the fundamentals necessary for baseball while working 1 on 1 and spending quality time with their parent/guardian.

Registration is open until July 1st.
For more information, call us or visit our website.

LATHROP COMMUNITY CENTER
15557 FIFTH STREET
LATHROP, CA 95330

(209)941-7370
WWW.CILATHROP.CA.US/PARKSREC

**Mini Movers
T-Ball**
Ages 3-5
Adult Participation
Required
Starts July 23rd



City of Lathrop
PARKS, RECREATION, & MAINTENANCE SERVICES
WE C.A.R.E.

YOUTH CO-ED VOLLEYBALL LEAGUE 2022 (AGES 8-13)

\$135
PER
PLAYER

REGISTER NOW
AUGUST 22 - OCTOBER 21
SET & SPIKE

PRACTICES & GAMES
in Scott Brooks
Gymnasium at
Lathrop Community
Center

Volleyball Information
- Ages 8-13 to participate
- Practice once a week on
Mondays or Wednesdays
- Games on Saturday evenings

Registration:
- No refunds after August 1st

REGISTRATION IS OPEN UNTIL AUGUST 1ST OR UNTIL LEAGUE FILLS.
FOR MORE INFORMATION, CALL US OR VISIT OUR WEBSITE.

LATHROP COMMUNITY CENTER
15557 FIFTH STREET
LATHROP, CA 95330

(209)941-7370
WWW.CILATHROP.CA.US/PARKSREC

**Youth Co-Ed
Volleyball**
Ages 8-13
Starts August 22nd

City of Lathrop
CITY OF LATHROP PARKS, RECREATION, AND MAINTENANCE SERVICES
PARKS, RECREATION, & MAINTENANCE SERVICES
WE C.A.R.E.

NFL FLAG 2022 FOOTBALL LEAGUE

SEASON RUNS
AUGUST 29 - OCTOBER 29

**BOYS AND GIRLS
AGES 5-13**

AGES 5-7 DIVISION
AGES 8-10 DIVISION
AGES 11-13 DIVISION

NFL FLAG IS DESIGNED TO TEACH THE PLAYERS THE FUNDAMENTALS OF FOOTBALL, GOOD SPORTSMANSHIP & TEAMWORK

LEAGUE INFORMATION:
\$135 PER PLAYER
PLAYERS WILL RECEIVE A JERSEY & MOUTH GUARD
PLAY AN EIGHT GAME SEASON
GAMES HELD ON SATURDAYS AT
MOSSDALE LANDING COMMUNITY PARK
PRACTICES HELD ONCE A WEEK
ON A WEEKDAY EVENING

PRACTICES BEGIN
THE WEEK OF AUGUST 29
GAMES BEGIN
SEPTEMBER 10

LOCATION
MOSSDALE LANDING
COMMUNITY PARK

FLAG

TO REGISTER, VISIT WWW.CILATHROP.CA.US/PARKSREC
REGISTRATION IS OPEN UNTIL AUGUST 15 OR UNTIL LEAGUE FILLS.
FOR MORE INFORMATION, CALL US OR VISIT OUR WEBSITE.

LATHROP COMMUNITY CENTER
15557 FIFTH STREET
LATHROP, CA 95330

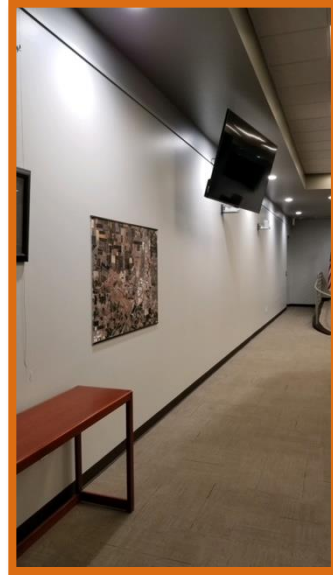
(209)941-7370
WWW.CILATHROP.CA.US/PARKSREC

**NFL Flag
Football**
Ages 5-13
Starts August 29th



PARKS & MAINTENANCE SERVICES

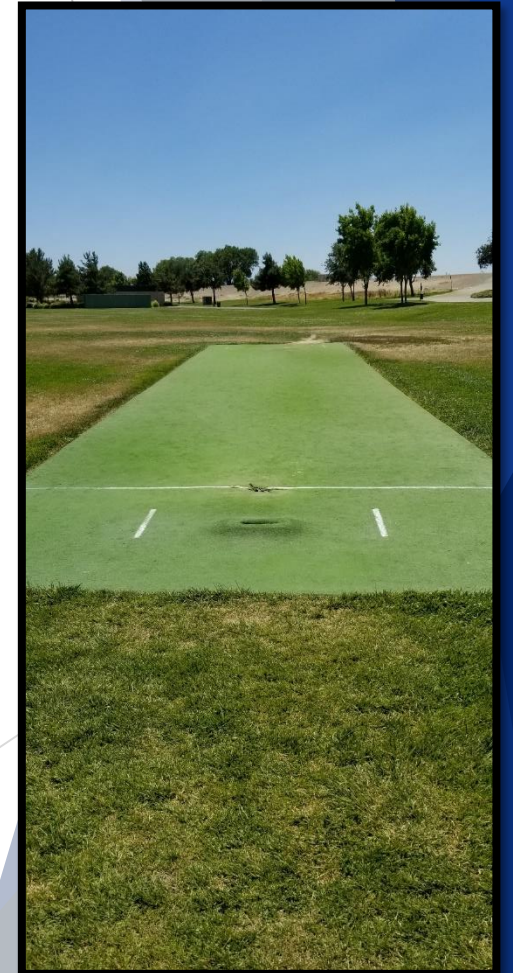
Council Chamber was recently repainted and the lighting was updated.



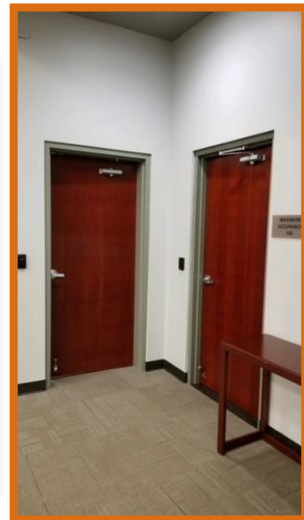
As part of the Joint Use Agreement with Banta Unified School District:

- The City has purchased 10 NCAA regulation portable soccer goals, and
- The City is in the process of designing & installing a 15' x 100' Cricket Pitch within the joint use area.

Cricket Pitch @ Mossdale



KwikGoal Fusion 8' x 24' x 9' Soccer Goals, with wheels and bags



PARKS & MAINTENANCE SERVICES

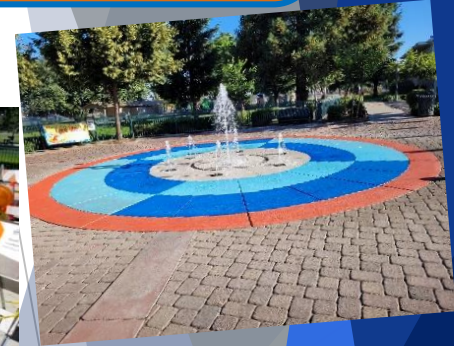
Concrete park furniture and trash receptacles were installed in the Generations Center picnic shelter, basketball and pickleball courts.



Splash pads at Mossdale and Valverde Park have been painted with skid resistant paint.



Annual fire extinguisher maintenance for all City fleet, facilities and utility stations was completed.



Before

After

Soil samples were collected from all City parks for analysis, to create a turf management plan.



SANGALANG PARK

Sangalang Park is scheduled to re-open in August 2022.

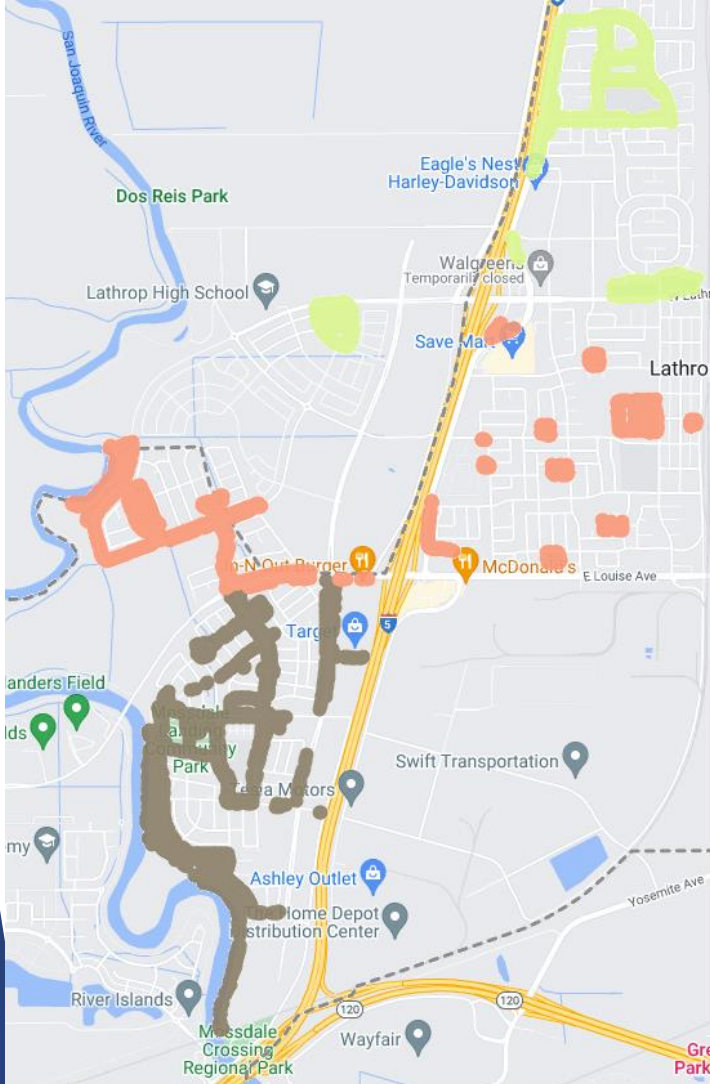


New Park Coming!

Design plans are underway for a new park on Schilling Avenue! Design concepts are scheduled to be presented to Council in September.



TREE INVENTORY



The Tree Inventory project has been completed.

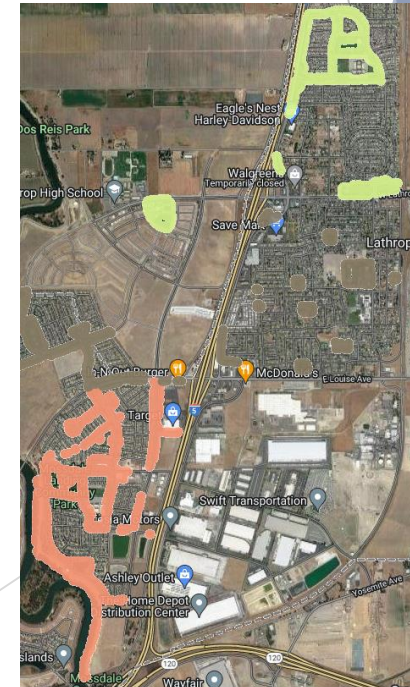
The GPS coordinates and information for 3,973 City-owned trees has been collected and a grid system has been created.

A Grid Pruning Plan is in place and trees will be pruned every 4 years.



Is the tree in front of the house the City's responsibility or the homeowner's responsibility to care for?

The tree in the mow strip in front of a house is the homeowner's responsibility.



WASTE SERVICES



Information regarding what can go into the Organics Cart was emailed on July 1st from Republic Services to their email subscribers.

This information will be mailed out in the August bill.

Organics Cart

As of January 1, 2022, all residents and businesses in California are required to recycle food and yard waste. Acceptable materials include food waste, green waste, landscape and pruning waste, non-hazardous wood waste and food-soiled paper products. All food and yard waste is collected in one cart for residential and commercial customers.



95-Gallon Organics Cart
Dimensions
Height: 45 3/8 inches
Width: 27 1/2 inches
Depth: 33 1/4 inches

| Acceptable Food Waste Items | Acceptable Yard Waste Items |
|--|---|
|  Fruit  Vegetables  Pasta, Grains, Rice and Beans  Meat  Bones  Dairy  Eggshells  Prepared Food |  Grass  Leaves  Plants  Branches |

Acceptable Food-Soiled Paper Items

| | |
|---|--|
|  Napkins  Tea bags |  Paper Plates  Coffee Grounds |
|---|--|

Unacceptable Items

- Trash
- Plastic film
- Cans
- Oil and grease
- Glass
- Packaging
- Cardboard
- Plastic bags
- Diapers



©2022 Republic Services, Inc.



Sustainability in Action



The Law

In 2016, Senate Bill 1383 was signed into law to combat climate change and reduce landfill methane emissions. Methane is a climate super pollutant, 84 times more potent than carbon dioxide. Organics like food scraps, yard trimmings, paper and cardboard currently make up 50% of what Californians dump in landfills. Diverting organic waste to recycling can significantly reduce these local air quality emissions. The goal was to reduce organic waste disposal 50% by 2020 and 75% by 2025.

What Does It Mean?

This law requires your waste hauler to collect your organic waste, including food waste, and dispose of it in a more sustainable manner, instead of simply taking it to the landfill.

What Is Organic Waste?

Organic waste includes food waste (vegetable and fruit scraps, eggshells and meat—anything you eat and any byproduct of your meal), food-soiled paper (napkins, paper plates, paper containers, pizza boxes, coffee filters) and green material (landscaping, pruning waste, sticks, leaves, wood).

Who Is Affected?

Everyone. Residents, multi-family properties and complexes, businesses, schools and public agencies all need to comply with the law and enroll in an organics recycling program.

How Is It Processed?

The law requires a significantly higher level of processing of organic material than current standards. Processors are required to monitor, track and ultimately limit the amount of organic material sent to landfills after processing, requiring additional processing and the development of new systems to remove contaminants and excess organic material that may have previously been sent to the landfill as residue.

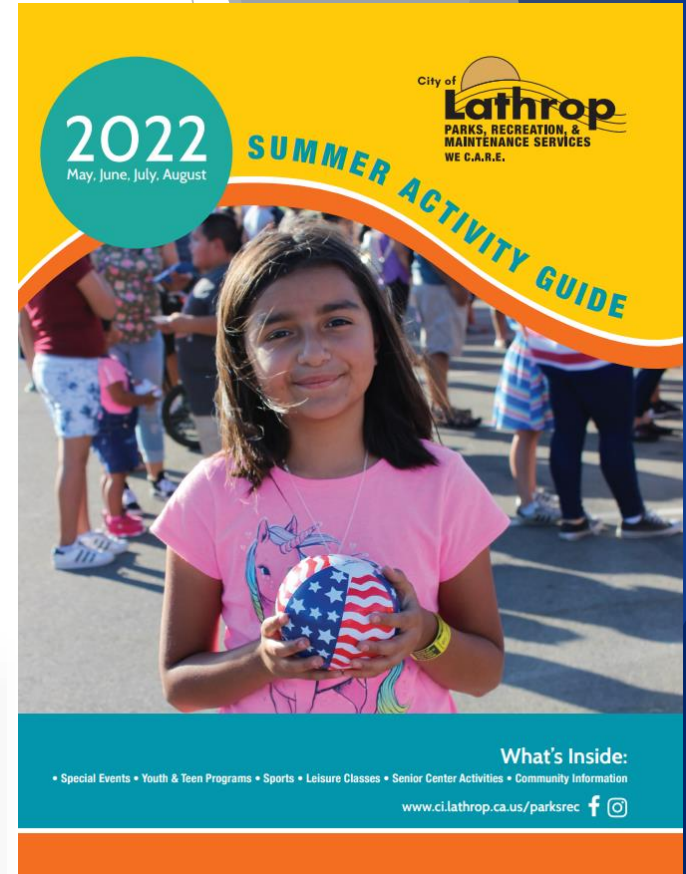
For more information or to start your organics recycling program, please email recycle209@RepublicServices.com.



Sustainability in Action

©2022 Republic Services, Inc.

For more information or
to register please visit:
www.ci.lathrop.ca.us/parksrec
or call (209) 941-7370



NEED TO REPORT SOMETHING?

DURING BUSINESS HOURS

**PARKS, RECREATION & MAINTENANCE SERVICES:
(209) 941-7370**

AFTER HOURS & EMERGENCY ONLY

PUBLIC WORKS: (209) 992-0028

PICNICS AND PARKS: (209) 941-PARK

