

# **PUBLIC HEARING (PUBLISHED NOTICE) TO CONSIDER ADOPTION OF THE FINAL TRACY SUBBASIN GROUNDWATER SUSTAINABILITY PLAN AND APPROVAL OF AMENDMENT NO. 1 TO THE TRACY SUBBASIN MEMORANDUM OF AGREEMENT**

**CITY COUNCIL REGULAR MEETING  
DECEMBER 13, 2021  
ITEM NO: 5.1**



[Date]

# Sustainable Groundwater Management Act Key Terms

**SGMA** = Sustainable Groundwater Management Act

**GSA** = Groundwater Sustainability Agency

**GSP** = Groundwater Sustainability Plan

**DWR** = California Department of Water Resources

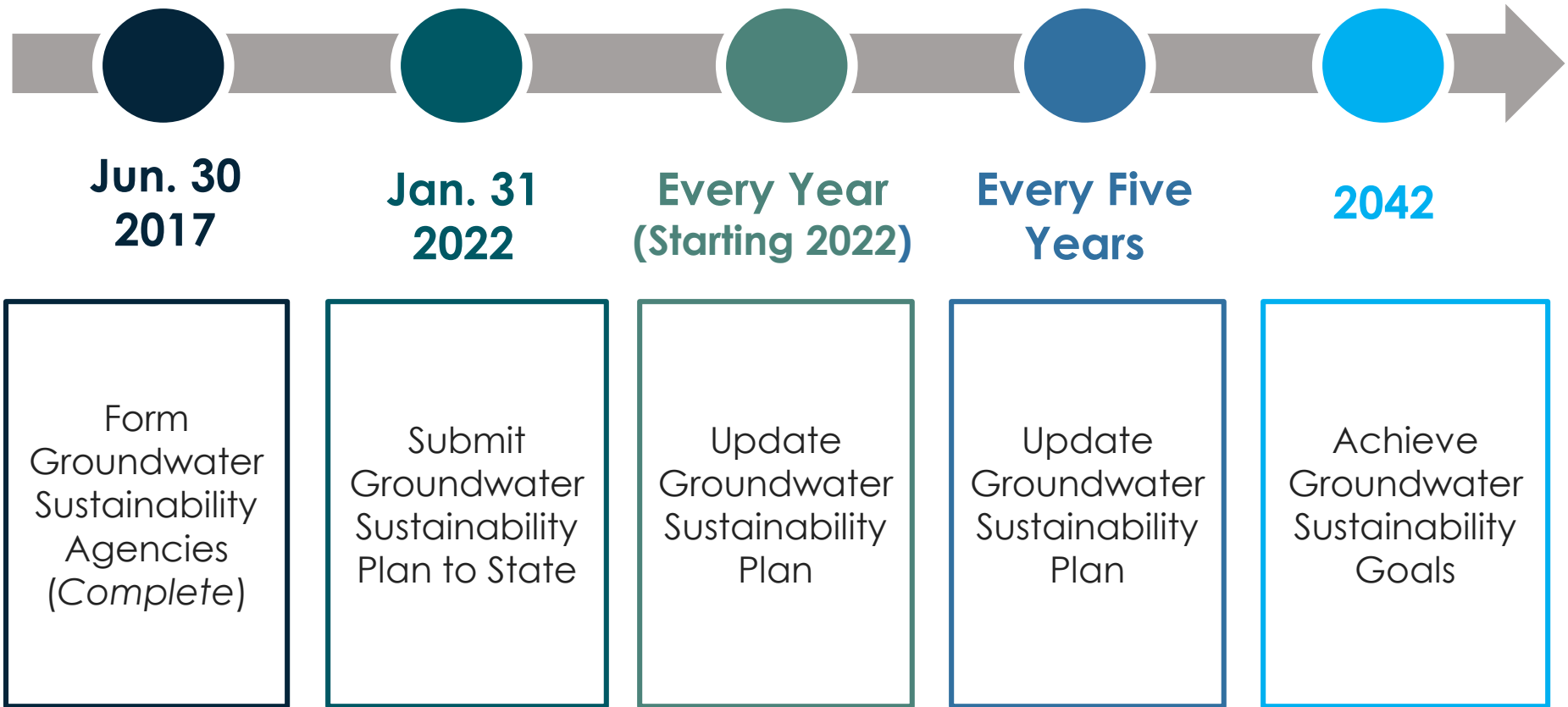
# Sustainable Groundwater Management Act of 2014

"A central feature of these bills is the recognition that **groundwater management in California is best accomplished locally.**"  
Governor Jerry Brown, 2014



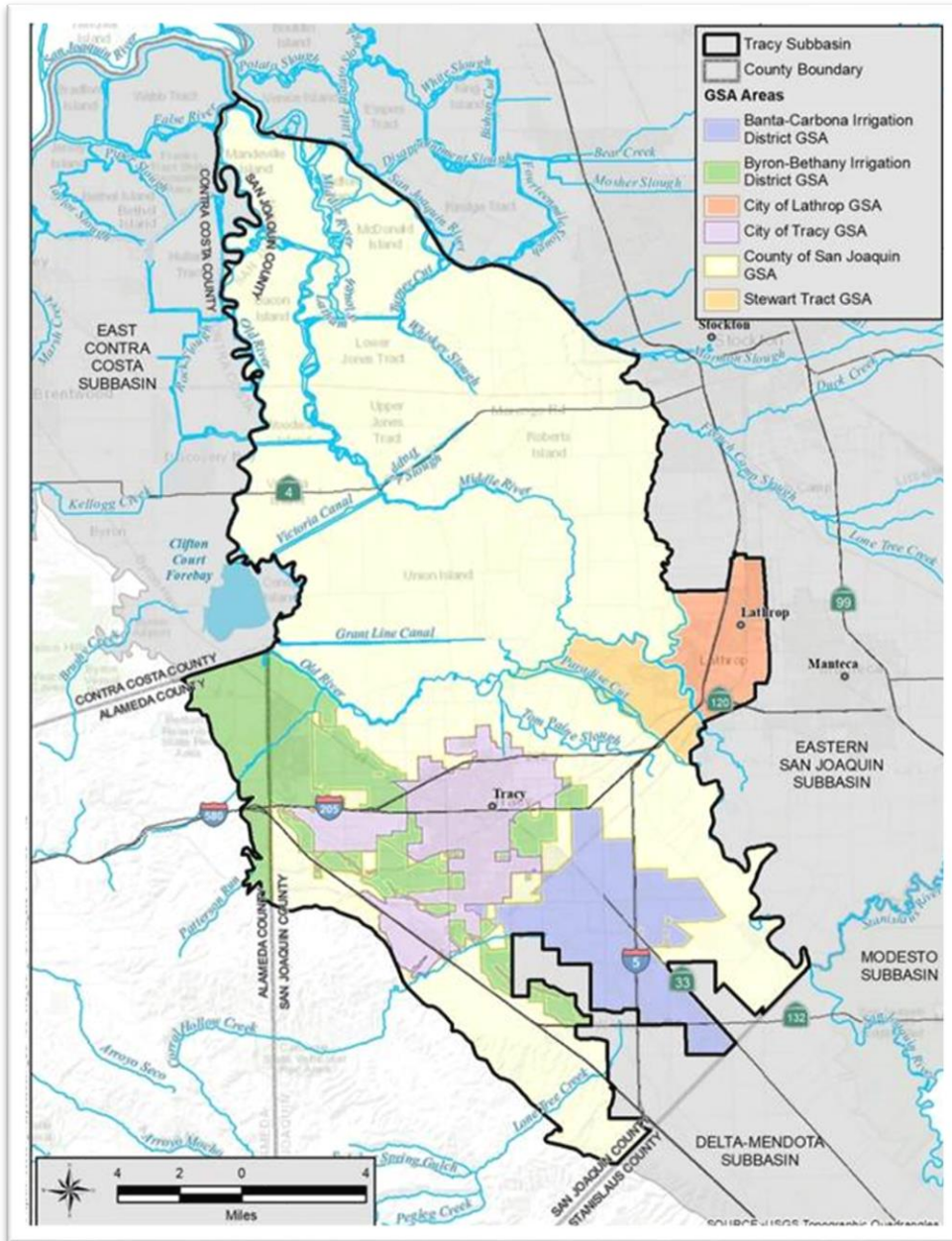
**Tracy Subbasin**

# Sustainable Groundwater Management Act Requirements



# Tracy Subbasin

- Boundary of the subbasin was modified in 2019
- Includes San Joaquin County and small portion Alameda County
- Generally bounded by San Joaquin River and San Joaquin County line
- Includes significant portion of the legal Delta



## 6 Groundwater Sustainability Agencies

Developing

## 1 Groundwater Sustainability Plan

- Banta-Carbona Irrigation District
- Byron-Bethany Irrigation District
- City of Lathrop
- City of Tracy
- San Joaquin County
- Stewart Tract

# We Already Have Reliable Groundwater Supplies

Local agencies have collaboratively managed groundwater resources for decades.

- **Not** currently considered to be in an overdraft condition
- The Tracy Subbasin is considered medium-priority
- Developing a single Groundwater Sustainability Plan
- A “road map” to preserve local control

# Groundwater Sustainability Plan (GSP)

## What is it?

- **20-year plan** to manage the basin's groundwater resources
- Describes current, historic, and projected (future) groundwater conditions
- Identifies criteria (thresholds and objectives) by which the GSAs will measure sustainability
- Describes how the GSAs will reach sustainability goals (implementation of projects and management actions)



# GSP Development Process

Develop Model

Develop Sustainability Criteria

Prepare Water Budgets

Identify Projects and Management Actions

Submit GSPs

Implement Projects

Monitor Projects

Implement Adaptive Management

Gather Data

Prepare HCM



# Public Input

## **PUBLIC MEETINGS AND WORKSHOPS**

Held monthly public meetings and biannual public workshops.



## **GSP PUBLIC COMMENT REVIEW**

Released draft chapters for review. Held 30-day Draft GSP public comment process.



## **TARGETED STAKEHOLDER OUTREACH**

Conducted targeted outreach to beneficial users of groundwater.



# 30-Day Draft GSP Public Comment Process

**X COMMENTS RECEIVED**



# GROUNDWATER SUSTAINABILITY PLAN OVERVIEW

## Introduction & Background

- Chapter 1 – Introduction
- Chapter 2 – Agency Information
- Chapter 3 – Description of Plan Area

## Defining Basin Conditions

- Chapter 4 – Hydrogeologic Conceptual Model
- Chapter 5 – Groundwater Conditions
- Chapter 6 – Management Areas
- Chapter 7 – Water Budgets



## Measuring and Monitoring Basin Sustainability

- Chapter 8 – Monitoring Networks
- Chapter 9 – Sustainable Management Criteria

## Achieving Sustainability

- Chapter 10 – Projects and Management Actions

## Engaging Groundwater Users

- Chapter 11 – Notice and Communication

# GSP Adoption Requirements

- ✓ GSAs must send a notice to cities and counties in the plan area at least 90-days prior to adoption (Notice of Intent to Adopt the GSP)
- ✓ Must be adopted at a public hearing
- ✓ All GSAs must adopt the GSP

# Memorandum of Agreement (MOA)

## MEMORANDUM OF AGREEMENT FOR DEVELOPMENT OF THE TRACY SUBBASIN GROUNDWATER SUSTAINABILITY PLAN

THIS MEMORANDUM OF AGREEMENT ("Agreement") is entered into and effective this 24 day of September 2019 ("Effective Date"), by and between the Banta-Carbona Irrigation District Groundwater Sustainability Agency ("GSA"), Byron-Bethany Irrigation District, City of Tracy GSA, City of Lathrop GSA, the County of San Joaquin, Stewart Tract GSA, and The West Side Irrigation District GSA (all hereafter known individually as a "Partner" or "GSA," and collectively as "Partners" or "GSAs").

### RECITALS

WHEREAS, on August 29, 2014, the California Legislature passed comprehensive groundwater legislation contained in Senate Bills 1168 and 1319, and Assembly Bill 1739, which is collectively referred to as the "Sustainable Groundwater Management Act" ("SGMA"); and,

WHEREAS, Governor Brown signed the legislation on September 16, 2014 and it became effective on January 1, 2015; and,

WHEREAS, the legislative intent of SGMA is to provide sustainable management of groundwater basins, to enhance local management of groundwater, to establish minimum standards for sustainable groundwater management, and to provide local groundwater agencies with the authority and the technical and financial assistance necessary to sustainably manage groundwater; and,

WHEREAS, SGMA also requires that by January 31, 2022, all high- or medium-priority basins that are not subject to critical conditions of overdraft shall be managed either under a single Groundwater Sustainability Plan ("GSP"), coordinated GSPs prepared by GSAs managing the basin, or an alternative plan, as provided in California Water Code Section 10720.7(a); and,

WHEREAS, the Partners are GSAs within the Tracy Subbasin which is designated as Basin Number 5-22.15 by the State of California Department of Water Resources ("DWR"); and,

WHEREAS, the City of Brentwood, on behalf of the Tracy Subbasin GSAs in East Contra Costa County and GSAs in Alameda and San Joaquin Counties, filed a grant application to DWR for the preparation their respective GSPs; and,

WHEREAS, on December 27, 2018, DWR and the City of Brentwood entered into Agreement

- Originally executed in September 2019
- Agreement with the 6 GSAs to develop a single GSP
- Does not include Implementation of GSP
- Expires when DWR approves the GSP

# Amendment to the Memorandum of Agreement (MOA)

- Extends the period of the MOA
- Focuses on GSP implementation
- Identifies new method to split shared costs associated with GSP implementation and SGMA compliance

# GSP Development Funding

**SAN JOAQUIN  
COUNTY  
GROUNDWATER  
INVESTIGATION  
ZONE NO. 2**



**DWR  
PROPOSITION 1  
GRANT**



**DWR FACILITATION  
SUPPORT SERVICES  
AND TECHNICAL  
SUPPORT SERVICES**



**GSA STAFF  
TIME AND  
RESOURCES**





# GSP Implementation Funding

Shared GSP implementation costs will be split based on Groundwater Pumping (60%), Acreage (20%) and Population (20%)

SAN JOAQUIN  
COUNTY  
GROUNDWATER  
INVESTIGATION  
ZONE NO. 2



GSA FUNDS



GRANTS AND  
OTHER FUNDING  
OPPORTUNITIES

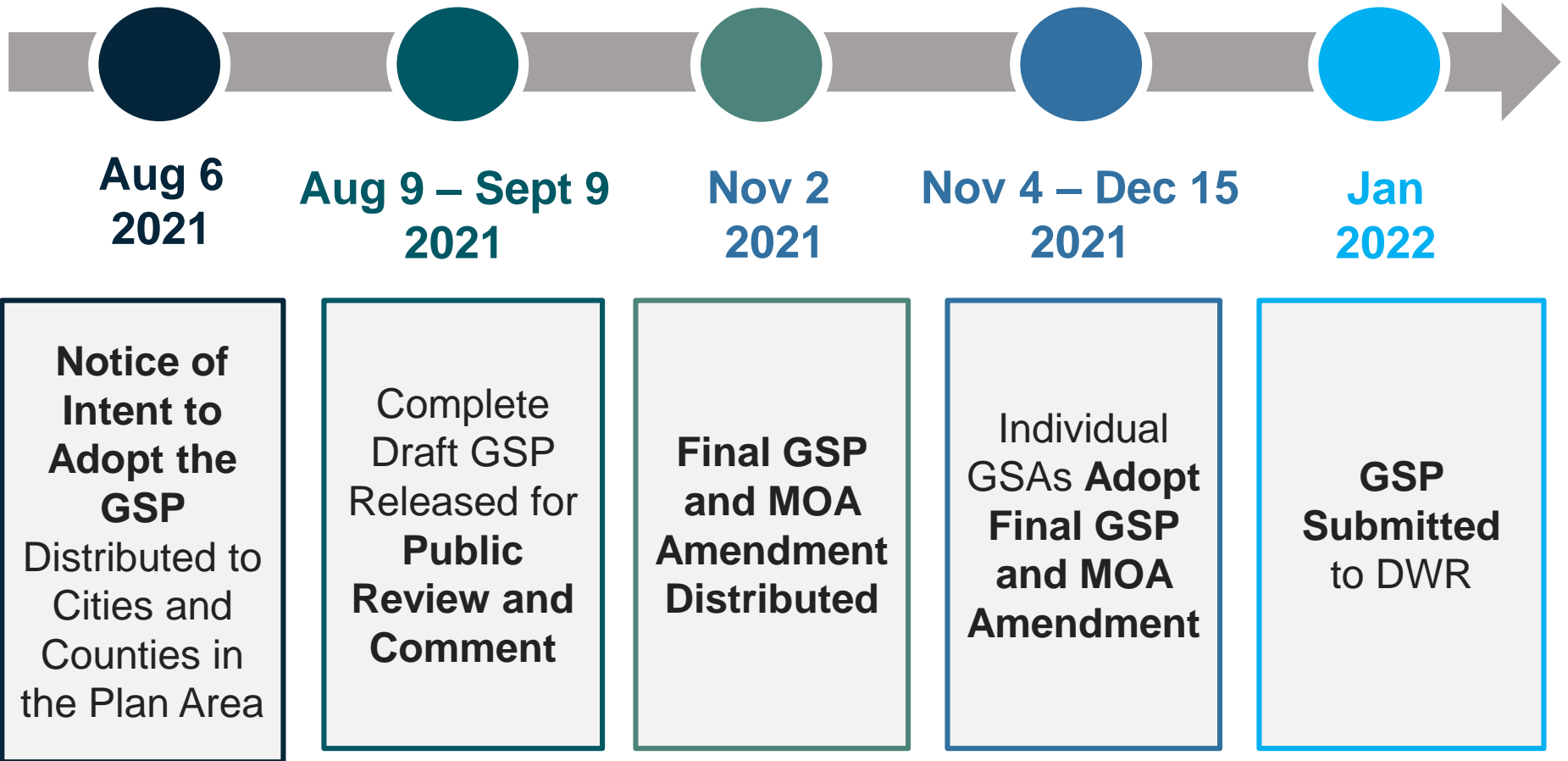


Tracy Subbasin

# GSP Implementation Coordinated Costs

- Five-year GSP updates
- Annual reports
- Technical analyses (as needed)
- Grant application development and administration
- Coordination meetings and public outreach
- Groundwater monitoring (for new wells)

# Timeline to Adopt the Final GSP



# Recommendation to the Board

- Adopt the Final Tracy Subbasin GSP
- Approve the amendment to the MOA and associated cost share agreement for implementation of the GSP