



**CITY OF LATHROP**  
**WOODFIELD MAINTENANCE DISTRICT**  
**ANNUAL ASSESSMENTS**

June 14, 2021  
Item No. 5.6

# OVERVIEW

## 1. Maintenance Districts

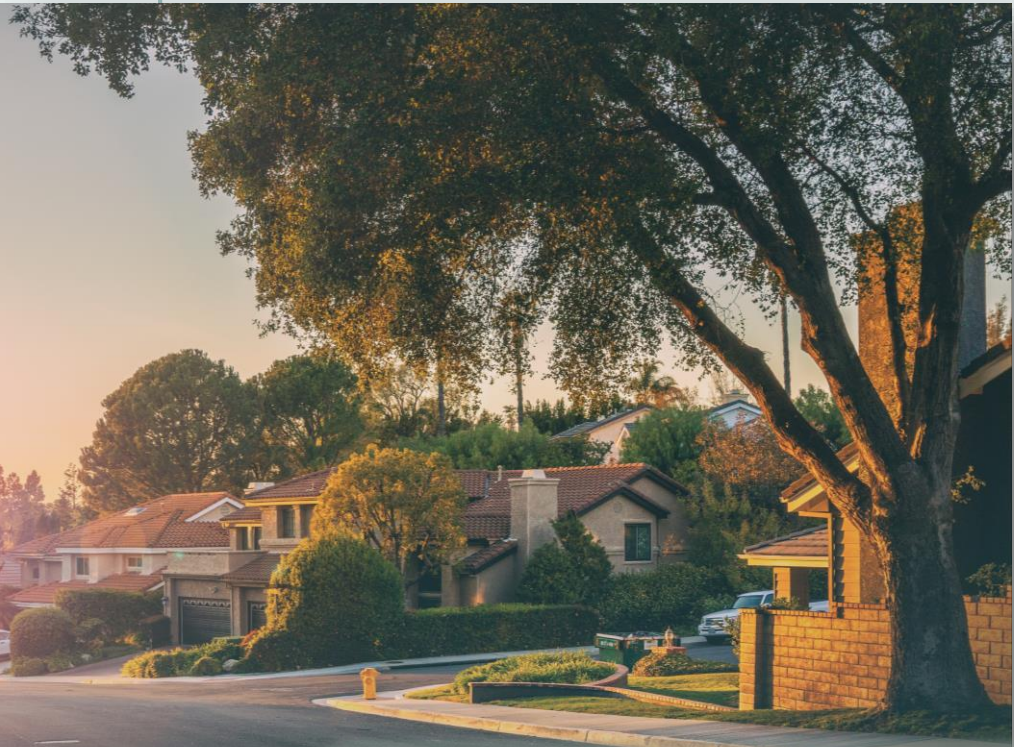
- Fiscal Assessment (by district)

## 2. Conduct Public Hearing

- Approve Fiscal Year 2021 /22 Assessment of Woodfield Maintenance Districts



# FISCAL ASSESSMENT — BY DISTRICT



## Major Expense Categories:

- Maintenance & Repairs
- Landscaping Contracted Services
- Water & Electric Charges

## Woodfield Landscape

- Supports the ongoing maintenance and operations of specific park improvements within the Woodfield area.
- Rate unchanged since FY1998/99 – District created without an escalator.

Woodfield District is proposed to be levied at a rate of \$123.90 per Equivalent Dwelling Unit (EDU). The assessment rate of \$123.90 per EDU has been in effect since Fiscal Year 1998/99 and is not proposed to increase.

<b>Woodfield Landscape</b>	
Beginning Fund Balance:	\$ 5,136
Assessment Revenues	54,764
Assessment Expenses	(98,000)
General Benefit Contribution (GF)	<u>38,100</u>
Ending Fund Balance:	\$ 0

***For FY 21/22, a General Fund contribution of \$38,100 is needed.***

# NEXT STEPS

## City Council's Action:

- Hold a Public Hearing;
- Approve Fiscal Year 2021 /22 Assessment of Woodfield Maintenance District

District	FY 20/21 Actual Rates	FY 21/22 Proposed Rates	% Change	Notes
Woodfield	\$ 123.90	\$ 123.90	0.00%	Rate unchanged since FY 1998/99