

CITY OF LATHROP

NOTICE OF COMPLETION OF A DRAFT ENVIRONMENTAL IMPACT REPORT AND NOTICE OF MEETING

LATHROP GATEWAY BUSINESS PARK SPECIFIC PLAN PROJECT

NOTICE IS HEREBY GIVEN that the City of Lathrop has undertaken the preparation of an Environmental Impact Report (EIR) to study the proposed Lathrop Gateway Business Park Specific Plan Project. The proposed Project consists of a request for City approval of the Lathrop Gateway Business Park Specific Plan, associated applications and the annexation of the 384-acre specific plan area into the City of Lathrop. The Land Use Plan proposes approximately 57 acres of commercial office uses, 168 acres of limited industrial uses, 83 acres of service commercial uses and the remaining 77 acres in roads and public facility sites.

The Project site is south of the existing City of Lathrop city limits, located south of Vierra Road and Yosemite Avenue, between two Union Pacific Railroad tracks that pass through southern Lathrop, east of the I-5 freeway and north of SR-120.

Serving as the Lead Agency, the City of Lathrop has prepared a Draft Environmental Impact Report (DEIR), which examines the potentially significant environmental effects of the proposed development described above that could occur as a result of the Specific Plan. The DEIR has identified potentially significant environment effects in the areas of agriculture, air, biological, cultural resources, geology, global climate change, hazards, hydrology and water quality, noise, public services and utilities, transportation and cumulative.

The City of Lathrop (as Lead Agency) is seeking agency and public comment on the DEIR. If you represent a public agency, please provide information that is germane to your statutory responsibilities as they may be affected by this project. Responsible and trustee agencies are encouraged to use the EIR when considering approvals they may grant related to the project.

The Lathrop Gateway Business Park Specific Plan and Draft Environmental Impact Report are available for public review at the City of Lathrop, Community Development Department, 390 Towne Centre Drive, Lathrop, CA 95330 between the hours of 8:00 a.m. to 6:00 p.m., Monday thru Thursday. **The subject Lathrop Gateway Business Park Specific Plan and DEIR are also available for review on the City of Lathrop website at www.ci.lathrop.ca.us.**

A 45-day public review period is being provided beginning on June 10, 2010 and ending on July 26, 2010. Written comments should be submitted to the address below prior to 6:00 p.m., Monday, July 26, 2010.

Submit comments to:

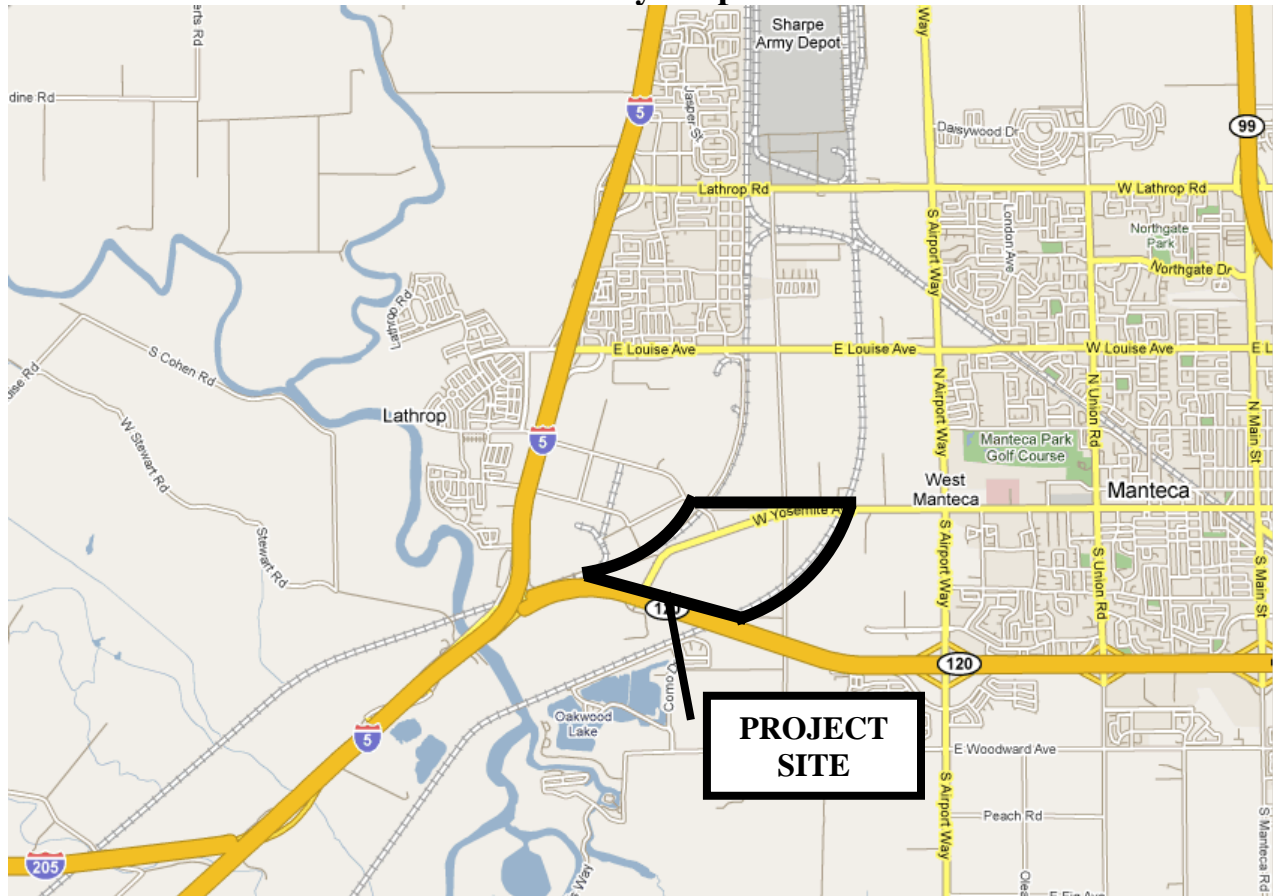
Charlie Mullen, Princial Planner
City of Lathrop
390 Towne Centre Dr.
Lathrop, CA 95330
(209) 941-7298 Direct
(209) 941-7268 Fax
cmullen@ci.lathrop.ca.us

NOTICE OF DEIR MEETING

An informational meeting on the Lathrop Gateway Business Park Specific Plan Draft Environmental Impact Report will be held by the City of Lathrop Planning Commission on **Wednesday, July 14, 2010 beginning at 7:00 p.m.** in the Council Chambers, Lathrop City Hall, 390 Towne Centre Drive, Lathrop. A presentation on the DEIR will be made at 7:00 p.m. at the meeting followed by a period for the general public to comment on the DEIR. Those wanting to comment on the project, but not in public, can also provide written comments during the 45-day public comment period (June 10 through July 26, 2010).

FOR FURTHER INFORMATION, PLEASE CALL CHARLIE MULLEN, PRINCIPAL PLANNER AT (209) 941-7298.

Vicinity Map



MAILED ON OR BEFORE THURSDAY, JUNE 10, 2010.